

PAGE #1		Dec 2022		West Henrico Co. - Glen Allen Weather Center 37.65537° N. 77.56929° W. - Koontz															
Dec 2022	Week Day	TEMPERATURE °F				TEMPERATURE °F				SKY		PRECIPITATION			FROZ. PRECIP.		1st PERIOD		
		MAX.	Time	MIN.	Time	RANGE	MEAN	CHANGE	SOIL	AM	PM	Liquid	1 Hr.	5 Min.	NEW	GROUND	START	END	
Dec-01	Thu	49.7	12:29	28.4	23:52	21.3	39.1	-12.2	49	0	1								
Dec-02	Fri	53.5	14:12	25.5	7:04	28.0	39.5	0.5	47	0	0								
Dec-03	Sat	60.5	15:28	44.8	23:58	15.7	52.7	13.2	47	2	2	0.42	0.19	0.02			0135 1230		
Dec-04	Sun	50.0	12:49	28.9	23:31	21.1	39.5	-13.2	48	1	1								
Dec-05	Mon	50.7	14:45	24.9	6:40	25.8	37.8	-1.7	46	2	1								
Dec-06	Tue	50.5	23:54	33.4	0:01	17.1	42.0	4.2	45	2	2	0.28	0.12	0.02			0525 0530		
Dec-07	Wed	62.0	15:27	50.4	0:01	11.6	56.2	14.3	47	2	2	0.17	0.13	0.01			0001 0045		
Dec-08	Thu	59.5	10:50	48.3	23:56	11.2	53.9	-2.3	49	1	2	0.01	0.01	T			0035 0040		
Dec-09	Fri	51.2	12:31	38.0	20:42	13.2	44.6	-9.3	50	0	0	0.01	0.01	T			0001 0215		
Dec-10	Sat	44.7	14:30	39.2	7:43	5.5	42.0	-2.7	49	2	2	T	T	T			0700 0710		
Dec-11	Sun	53.0	14:35	40.3	20:34	12.7	46.7	4.7	48	2	1	T	T	T			0355 0405		
Dec-12	Mon	44.6	12:47	32.0	7:22	12.6	38.3	-8.4	48	2	2								
Dec-13	Tue	45.7	12:30	26.0	23:48	19.7	35.9	-2.5	47	2	0								
Dec-14	Wed	43.0	14:34	24.2	4:05	18.8	33.6	-2.3	46	2	2	0.06	0.05	0.01			2200 2400		
Dec-15	Thu	43.5	15:29	33.8	5:53	9.7	38.7	5.1	45	2	2	2.31	0.43	0.06			0001 1745		
Dec-16	Fri	54.4	12:33	31.0	23:32	23.4	42.7	4.1	44	0	2								
Dec-17	Sat	50.8	12:37	29.7	7:02	21.1	40.3	-2.5	44	0	1								
Dec-18	Sun	48.1	11:39	25.5	6:54	22.6	36.8	-3.5	43	0	2								
Dec-19	Mon	45.0	14:08	21.9	7:30	23.1	33.5	-3.3	42	1	2								
Dec-20	Tue	40.7	13:53	20.1	7:26	20.6	30.4	-3.1	41	0	1								
Dec-21	Wed	46.0	13:35	22.3	6:43	23.7	34.2	3.8	40	0	0								
Dec-22	Thu	57.1	18:13	33.7	0:31	23.4	45.4	11.3	40	2	2	1.26	0.33	0.04			0200 1755		
Dec-23	Fri	46.8	7:38	11.3	23:55	35.5	29.1	-16.4	42	2	0	0.04	0.04	0.01			0730 0905		
Dec-24	Sat	23.4	14:33	5.8	7:14	17.6	14.6	-14.5	41	0	0								
Dec-25	Sun	35.1	14:36	14.1	7:22	21.0	24.6	10.0	38	0	0								
Dec-26	Mon	36.1	11:30	12.2	7:33	23.9	24.2	-0.5	37	0	2								
Dec-27	Tue	47.5	13:30	24.8	7:49	22.7	36.2	12.0	37	0	0								
Dec-28	Wed	53.6	14:37	23.7	6:54	29.9	38.7	2.5	37	0	0								
Dec-29	Thu	62.7	14:27	35.5	1:26	27.2	49.1	10.5	36	0	0								
Dec-30	Fri	69.1	12:50	40.4	2:59	28.7	54.8	5.7	36	0	0								
Dec-31	Sat	60.6	13:04	51.5	2:09	9.1	56.1	1.3	39	2	2	0.66	0.34	0.06			1305 2030		
TOTAL NUMBER		1539		922		617.5	1230.4	4.8	1348	29	34	5.22	1.65	0.23	0	0	Col.26-27		
AVERAGE		31	13:52	31	10:31	31	39.69		31	31	31	10	10	8	0	0	DAILY AVE RH		
Normals		52.60		32.91		19.99	42.76		46.8	1.13	1.18	4.05	0.47	0.10	3.0	1.9	72.7 Percent		
DEPARTURES		-2.95		-3.18		0.23	-3.07		-3.3	-0.20	-0.09	1.17	1.18	0.13	-3.0	-1.9	0.9 Percent		
Max. Temps. >= 70°F	69.1	Ave. High-Max	51.5	Ave. High-Min	35.5	56.2	14.3	50	Whole Day			2.31	0.43	0.06	0	0.0	Precip	24 Hr.	
2022	0	Dec-30	69.0	Dec-31	51.8	Dec-23	Dec-07	Dec-07	Dec-09	AVERAGE	1.02	Dec-15	Dec-15	Dec-15			Amount	2.37	
Ave.	1.7		Dep.		Dep.					NORMAL	1.13						Date	14-Dec	
Departure	-1.7		0.1		-0.3					DEPART.	-0.12						Date	15-Dec	
Min. Temps. <= 32°F	23.4	Ave. Low-Max	5.8	Ave. Low-Min	5.5	14.6	-16.4	36	SKY			PM	≥ 0.10 INCHES		≥ 1.00 INCHES		≥ 2.00 INCHES		
2022	19	Dec-24	35.6	Dec-24	19.3	Dec-10	Dec-24	Dec-23	Dec-29	CLEAR	15	11	6	DAYS	2	DAYS	1	DAYS	
Ave.	18.6		Dep.		Dep.				Dec-30	PT. CLO.	3	6	HOTTEST DAY		56.2	Highest Mean	Lowest Mean	COOLEST DAY	14.6
Departure	0.4		-12.2		-13.5					CLOUDY	13	14	DAY		12-07			DAY	12-24
Days Max. <=32 °F	1			MAX.	≥ 80	≥ 75	≥ 70	≥ 65	≥ 60	≥ 55	≥ 50	≥ 45	≥ 40	≥ 35	≥ 30	≥ 25	≥ 20		
Days Max. >=90°F	0			DAYS	0	0	0	1	6	7	17	25	28	30	30	30	31		

PAGE #2		Dec 2022		West Henrico Co. - Glen Allen Weather Center 37.65537° N. 77.56929° W. - Koontz																																	
20		21		22		23		24		25		26		27		28		29		30		31		32		33		34		35		36		37		38	
Dec 2022	2nd PERIOD		WIND			REL. HUMIDITY		BAROMETRIC PRESSURE												DEW	FROST																
	START	END	RUN	MAX.	TIME	MAX.	MIN.	MAX.	MIN.	AVE.	CHANGE	GLAZE	SLEET	SNOW	FOG	DEW	FROST																				
Dec-01			38.9	13	2:58	85	33	30.52	30.12	30.32	-0.34																									P	
Dec-02			65.9	17	10:58	92	33	30.59	30.40	30.50	0.17																									4	
Dec-03			109.4	21	13:54	97	74	30.42	30.11	30.27	-0.23																									P	
Dec-04			22.4	12	9:49	96	47	30.32	30.20	30.26	-0.01																									5	
Dec-05			21.2	11	12:16	97	40	30.31	30.21	30.26	0.00																									5	
Dec-06	0705	0710	18.7	8	5:36	98	75	30.28	30.22	30.25	-0.01																									P	
Dec-07	0615	1155	72.0	13	4:46	98	95	30.24	30.14	30.19	-0.06																									P	
Dec-08	1405	1410	46.6	14	9:58	98	69	30.30	30.18	30.24	0.05																									5	
Dec-09			60.0	13	9:14	91	57	30.32	30.23	30.28	0.03																									P	
Dec-10			48.9	10	12:33	87	61	30.35	30.27	30.31	0.04																									N	
Dec-11	0620	0625	22.9	10	14:43	94	70	30.30	30.08	30.19	-0.12																									P	
Dec-12			75.8	18	12:52	97	61	30.30	30.11	30.21	0.02																									2	
Dec-13			38.6	12	8:55	92	53	30.38	30.25	30.32	0.11																									N	
Dec-14			11.5	7	13:12	95	63	30.27	30.17	30.22	-0.09																									5	
Dec-15			70.7	14	16:12	98	87	30.18	29.72	29.95	-0.27																									P	
Dec-16			44.4	15	12:16	98	53	29.84	29.73	29.79	-0.16																									P	
Dec-17			47.1	18	12:13	95	42	29.94	29.83	29.89	0.10																									5	
Dec-18			39.3	15	10:21	95	43	30.27	29.89	30.08	0.20																									3	
Dec-19			40.7	13	11:57	84	44	30.48	30.27	30.38	0.30																									3	
Dec-20			32.3	14	10:17	90	52	30.56	30.44	30.50	0.13																									3	
Dec-21			29.9	11	11:49	93	50	30.54	30.42	30.48	-0.02																									4	
Dec-22	1810	2205	90.7	18	17:10	99	78	30.42	29.58	30.00	-0.48																									P	
Dec-23			194.2	35	7:48	98	36	29.60	29.30	29.45	-0.55																									P	
Dec-24			133.3	22	11:48	71	41	30.06	29.90	29.98	0.53																									N	
Dec-25			81.7	21	15:43	79	32	30.17	30.00	30.09	0.11																									2	
Dec-26			20.1	10	11:33	83	45	30.36	30.17	30.27	0.18																									4	
Dec-27			20.1	7	10:35	71	30	30.35	30.27	30.31	0.05																									N	
Dec-28			62.7	15	12:58	77	38	30.39	30.29	30.34	0.03																									3	
Dec-29			84.2	16	8:56	74	38	30.38	30.30	30.34	0.00																									N	
Dec-30			85.6	19	13:18	95	60	30.35	30.18	30.27	-0.07																									2	
Dec-31	2200	2400	47.6	12	19:39	100	91	30.18	29.86	30.02	-0.25																									3	
TOTAL	Column 23		1777.4	454		2817	1691	938.97	932.84	935.91	TOTAL	0	0	0	1	0	6	12																			
NUMBER	Max. Wind Run		31	31	31	31	31	31	31	31	NORMAL	0.0	0.2	0.6	2.5	0.5	11.4	9.1																			
AVERAGE	Total		1777.4	57.34	14.65	11:29	90.87	54.55	30.29	30.09	30.19	DEPART.	0.0	-0.2	-0.6	-1.5	-0.5	-5.4	2.9																		
Normals	Miles		1473.1	58.7	17.0		91.3	52.4	30.24	29.97	30.11	Rating	0	0	0	3	0	23	43																		
DEPARTURES	Miles		304.3	1718.7	-2.3		-0.4	2.2	0.05	0.12	0.08	Intensity																									
MAXIMUM DATES			194.2	35	South	100	95	30.59	30.44	30.50	0.53	GLAZE	SLEET	SNOW	FOG		Dew	Frost																			
1			Dec-23	Dec-23	7:48	Dec-31	Dec-07	Dec-02	Dec-20	Dec-20	Dec-24																										
2																																					
3																																					
Min. Temps. >=70°F					Ave. Max.							5. Very Heavy 4. Heavy-Unusual 3. Moderate - Ave. 2. Light - >= Ave. 1. Very Light - Slight - Trace M - Event with intensity missing N- None No Dew Obs. P- Precip. prevent obs.																									
2022			0		30.7	71	30	29.60	29.30	29.45	-0.55																										
Ave.			0.0		Dep.	Dec-24	Dec-27	Dec-23	Dec-23	Dec-23	Dec-23																										
Departure			0.0		4.3	Dec-27																															
Dates			1	Dec-14	Dec-14	Dec-27																															
Days Min. <=32 °F			19		<= 65	<= 60	<= 55	<= 50	<= 45	<= 40	<= 35	<= 30	<= 25	<= 20	<= 15	<= 10	<= 5	<= 0																			
Days Min >=70°F			0		31	31	31	30	28	27	22	17	11	5	4	1	0	0																			

39

40

REMARKS FOR THE MONTH

December - 2022

Dec 2022	
Dec-01	THE AM SKY WAS VERY CLEAR STARTING AT NOON HIGH THIN CIRRUS CAME IN
Dec-02	AM WAS CLEAR AND PM WAS ABOUT 20-25% CLOUDY AND BREEZY
Dec-03	MOST INTENSE RAIN OCCURRED BETWEEN 0900-0930-MAX. WIND 21 MPH AT 1154-BROKEN OVERCAST AFTER 1530
Dec-04	HEAVY FROZEN DEW AND A LITTLE FROST-PC IN AM FROM CIRRUS AND PM WAS CLOUDY FROM ALTOCUMULUS PARTICULARLY IN SOUTHERN SKY FROM 1320-1545 THEN CLEAR REST OF DAY
Dec-05	A VERY HEAVY FROST WITH CLOUD COVER MOST OF AM-PM HAD CIRRUS BECOMING CIRROSTRATUS LATE & ONE NEARLY CLEAR PD. THAT OCCURRED FROM 1330-1515
Dec-06	3RD PD. OF PRECIP. 0950-1045, 4TH PD. 1410-1545, 5TH PD. 1640-2400 RAIN ASSOCIATED WITH WARM FRONT
Dec-07	3RD PD. 1555-1620 THEN CLOUDY AND DAMP AND GLOOMY AM WITH RAIN AND CLOUDY DAMP PM WITH VERY LITTLE RAIN
Dec-08	3RD PD. 1655-1740- A PC AM AND PM HAD NO SUN BUT WAS WARM 4TH PD. OF PRECIP. 2330-2400
Dec-09	SOME EARLY AM CLOUDS BUT VERY CLEAR FROM 0845 FOR THE REST OF THE DAY BUT SW VIRGINIA WAS CLOUDY ALL DAY
Dec-10	AN EARLY AM SPRINKLE THEN A CLOUDY CHILLY DAY AND GLOOMY
Dec-11	3RD PD. OF PRECIP. 0855-1005-CLOUDY ALL DAY TO 1315 THEN A BROKEN OVERCAST THAT BECAME PC
Dec-12	TODAY WAS CLOUDY AND WINDY AND COLD WITH AN UNCOMFORTABLE WIND CHILL
Dec-13	AM RELATIVE HUMIDITY MAX. 74%-CLOUDS BECAME BROKEN AT 1030 BUT CLEAR BY NOON AND PM WAS CLEAR
Dec-14	CLOUDY ALL DAY WITH ALTOSTRATUS AND STRATUS LATER IN PM AND CHILLY
Dec-15	A 19 HOUR 45 MIN. RAIN WITH A TOTAL OF 2.38 INCHES THE MOST SINCE AUG. 7, 2021 WHEN 2.43 INCHES WAS REC.
Dec-16	AM WAS VERY CLEAR AND RAIN ON GRASS WAS FROZEN STIFF IN EARLY AM-PM STARTED CLEAR BUT CUMULUS CAME IN AND LATER BECAME STRATOCUMULUS
Dec-17	AM WAS VERY CLEAR WITH CUMULUS COMING IN AT NOON AND ALTOCUMULUS BY 1345 THAT CLEARED AT 1545 AND WAS THEN CLEAR TO DARK-PM SKY CLOUD COVERAGE EST. 35-45%
Dec-18	SOME EARLY CLOUDS BUT VERY CLEAR FROM 0800 TO 1130 -AFTERNOON WAS CLOUDY FOR MOST PART
Dec-19	CIRRUS STARTED COMING IN AT 0830 AND INCREASED AND WAS CLOUDY BY 1100-PM WAS CLOUDY WITH EST. 50% SOLAR ENERGY PASSING THROUGH CLOUDS
Dec-20	COLDEST SINCE MAR. 13, 2022 WHEN IT WAS 15.8 degrees F -AM CLEAR PM HAD CIRRUS AFTER 1500 THEN THICKER CIRRUS AFTER 1645
Dec-21	A VERY CLEAR AM WITH A FEW CIRRUS UNTIL 1600 THEN IT BECAME CLOUDY-PM EST. 20-25% CLOUDY
Dec-22	A CHILLY RAINY DAY WITH A STRONG ARCTIC FRONT TO PASS TOMORROW AM
Dec-23	AM CLOUDS STARTED CLEARING BY 1000 AND WAS CLEAR BY 1100-PM CLEAR COLD AND WINDY MIN. WIND CHILL -4.8 degrees F
Dec-24	COLDEST SINCE JAN. 11, 2018 WHEN MIN. WAS -1.4 degrees F -AM REL HUMIDITY 58%
Dec-25	FROST MAINLY ON ROOFS AND SKY MIRROR-A VERY CLEAR DAY AND WARMER
Dec-26	SOME AM CIRRUS EST. CLOUD COVER 30%-PM BECAME CLOUDY WITH CIRROSTRATUS AND ALTOSTRATUS
Dec-27	AM REL. HUMIDITY ONLY 58% AND NO CLOUDS SEEN TODAY AND MUCH WARMER
Dec-28	A FEW SCATTERED CIRRUS DURING DAY UNTIL 1415 WHEN CIRRUS INCREASED BUT THEN TURNED TO CLEAR SKIES AGAIN UNTIL AFTER 1540
Dec-29	NO CLOUDS TODAY AND MUCH WARMER ALSO NO DEW
Dec-30	THE AM WAS VERY CLEAR AND THE PM HAD SCATTERED CUMULUS BETWEEN 1315 AND 1445 THEN CIRRUS CAME IN FROM THE NORTH FOLLOWED BY CIRROSTRATUS. BY SUNSET.
Dec-31	EARLY MODERATE FOG -THE FOG WAS HEAVIEST AT 0730 AND CLEARED AT 1010 WITH THE THREAT OF RAIN THAT STARTED AT 1305 AS SPRINKLES-(ENDED AS SPRINKLES FROM 2200 TO 2400).
DATE	EXTENSION OF LENGTHY DAILY REMARKS

The daily records for the month are listed on page # 4 and not found in the remarks.

The link below explains how observations are taken at the Glen Allen Weather Station - Note the Numbers match the column numbers on the Observation Sheet

[Rules for making Observations in 2022](#)

DAILY RECORDS FOR THE MONTH

41

Dec

2022

The Springfield Park Station had 17 Records or Record Ties in December 2022

1

2

The minimum temperature on the 2nd was 25.5&deg;F, a new 14-year LOW daily minimum temperature record for the date - the old record was 27&deg;F in 2010 and 2008.

3

The daily precipitation on the 3rd was 0.06 inches, a new 14-year HIGH daily precipitation record for the date - the old record was 0.02 inches in 2014.

The daily temperature range on the 3rd was 15.7&deg;F, a new 14-year LOW daily temperature range record for the date - the old record was 17&deg;F in 2010.

4

5

The minimum temperature on the 5th was 24.9&deg;F, a new 14-year LOW daily minimum temperature record for the date - the old record was 26&deg;F in 2010.

6

7

The minimum temperature on the 7th was 50.4&deg;F, a new 14-year warm daily minimum temperature record for the date - the old record was 39&deg;F in 2011.

8

9

10

The daily temperature range on the 10th was 5.5&deg;F, a new 14-year LOW daily temperature range record for the date - the old record was 9&deg;F in 2008.

11

12

13

14

15

The daily precipitation on the 15th was 2.31 inches, a new 14-year HIGH daily precipitation record for the date - the old record was 0.35 inches in 2018.

16

17

18

19

20

21

22

The daily precipitation on the 22nd was 1.26 inches, a new 14-year HIGH daily precipitation record for the date - the old record was 0.52 inches in 2011.

23

The minimum temperature on the 23rd was 11.3&deg;F, a new 14-year LOW daily minimum temperature record for the date - the old record was 15&deg;F in 2008.

The daily temperature range on the 23rd was 35.5&deg;F, a new 14-year HIGH daily temperature range record for the date - the old record was 27&deg;F in 2012.

24

The minimum temperature on the 24th was 5.8&deg;F, a new 14-year LOW daily minimum temperature record for the date - the old record was 21&deg;F in 2010.

The maximum temperature on the 24th was 23.4&deg;F, a new 14-year cold daily maximum temperature record for the date - the old record was 42&deg;F in 2012 and 2009.

25

The minimum temperature on the 25th was 14.1&deg;F, a new 14-year LOW daily minimum temperature record for the date - the old record was 18&deg;F in 2013.

26

The minimum temperature on the 26th was 12.2&deg;F, a new 14-year LOW daily minimum temperature record for the date - the old record was 19.9&deg;F in 2020.

27

28

29

The daily temperature range on the 29th was 26.5&deg;F, a new 14-year HIGH daily temperature range record for the date - the old record was 25&deg;F in 2010.

30

31

The daily precipitation on the 31st was 0.66 inches, a new 14-year HIGH daily precipitation record for the date - the old record was 0.27 inches in 2009.

December 2022

Springfield Park, Glen Allen, VA

December was the third coldest and fifth wettest on record. The monthly mean temperature was 39.7 °F, a -3.1 degrees F departure from the 14-year average. The extreme cold of Christmas Eve set a new low temp. record for December of 5.8 degrees F which was 7.2 degrees colder than the previous 14-year record minimum. The Christmas Eve daily mean was 14.6 F which was 5.8 F lower than the previous record set in 2017. The lowest max. temp. of 23.4 F occurred on the 24th which was the lowest max. temp. ever recorded in December.

On 19 days the min. temperature dropped to freezing or below; the average is 18.6 days for Dec. The highest temp. was 69.1 degrees F on the 30th.

The highest barometric pressure of the month was 30.59 inches and was recorded on the 2nd. The lowest barometer was 29.30 inches of mercury on the 23rd and the highest wind gust of 35 mph was recorded on the same day ahead of the extreme cold front.

December didn't have even a trace of snow which hasn't happened since 2015. The precipitation total for the month was 5.22 inches a departure of 1.17 inches. There were 10 days with measurable precipitation in December. The max precip. in a day was 2.31 inches on the 15th and the 2nd greatest recorded in a day in Dec. The total precipitation for the year was 44.32 inches with a departure of -4.19 inches making it the 6th driest year in the past 14 years at Springfield Park.

December 24th at 659 a wind chill of -12.3 F was recorded, the lowest ever recorded at this station in the month of December. The annual total snowfall was 10.1 inches a departure with a deficit of -4.3 inches.

Richmond International Airport

The daily mean temperature for Richmond on Christmas Eve was 16.0 degrees F which made Christmas Eve the coldest on record. (Records since 1880). The previous record daily mean for December was 18.5 F set in 1983. December's lowest min. temp. was 8 degrees F on the 24th; only 12 Decembers since 1897 have had a colder reading. The lowest maximum temp. for Dec. was 24 degrees F. The lowest on record is 13 degrees F in 1917. No year since 1989 has had a lower maximum temp. for Dec. Note on the Airport Graph on the 24th the maximum temp. was so low it dipped below the average minimum temp. for the date.

The total precipitation for December was 4.52 inches a departure of 1.01 inches and the 26th wettest Dec. since 1887. The 2.11 inches of precipitation recorded on the 15th was the 6th largest daily precipitation since 1887. December had no frozen precipitation. The total precipitation for the year was 39.53 inches which was a -5.97-inch deficit for 2022. The annual snowfall was 4.7 inches a departure of -4.1 inches.

1 low max. temp. record for the date

Dec 24th 24°F tied the record set in 1989

1 High temp range record for the date

Dec 29th 36°F tied the record set in 1949

1 mean low temp. record for the date

Dec 24th 16.0°F New Record – The old record was 18.5 in 1983.

1 max. Precip. record for the date

Dec 15th 2.11 inches new record - The old record was 1.85 inches in 2005.

ACON - VA/NC/SC

The Atlantic Coast Observer Network: Virginia, North Carolina, South Carolina

December 2022

Station summary of Climatological Data

Observer: Lowell L. Koontz

West Henrico - Glen Allen, VA

Observation Times: Temps Recorded 2400 Precipitation Recorded 2400

TEMPERATURE °F

A	AVERAGE MAXIMUM	49.65
B	AVERAGE MINIMUM	29.73
C	MONTHLY AVERAGE	39.69
C1	AVERAGE TEMP DEP.	-3.1
D	MAXIMUM	69
E	DATE(s) OF MAX.	Dec-30
F	MINIMUM	5.8
G	DATE(s) OF MIN.	Dec-24
H	# DAYS MAX. > = 90°	0
I	# MAX. < = 32°	1
J	MIN. < = 32°	19
K	MIN. < = 0°	0
K1	AVE RELATIVE HUMIDITY	72.7

WIND MPH

L	MAX. GUST	35
M	DIRECT. OF GUST	South
N	DATE	Dec-23
	TIME	7:48

NUMBER DAYS WITH -

O	THUNDER	0
P	HAIL	0
Q	GLAZE	0
R	ICE PELLETS (SLEET)	0
R1	DENSE FOG < = 1/4 MILE	0

S 2400 HOUR - PRECIPITATION INCHES

T	MONTH TOTAL	5.22
T1	PRECIP. Dep. From Ave.	1.17
U	CALENDAR DAY MAX.	2.31
U1	DATE OF MAX.	Dec-15
V	24-HR. PERIOD MAX.	2.37
V1	DATE(s) OF MAX. PD.	14 th & 15 th
W	# DAYS > = 0.01"	10
X	# DAYS > = 1.00"	2
Y	YR. TO DATE TOT.	44.32
	MAX. 1 HR. PRECIP.	0.43

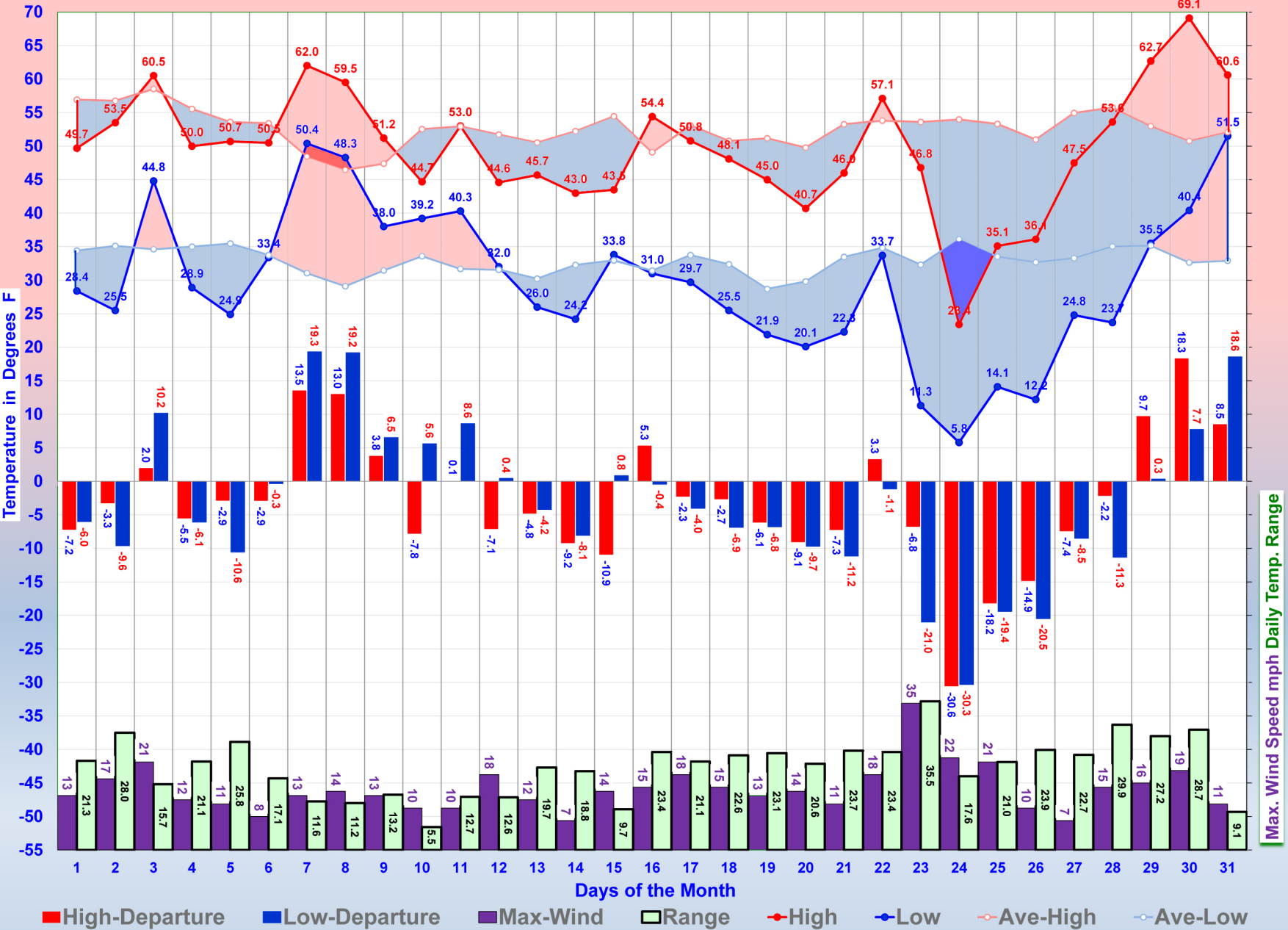
SNOWFALL INCHES

Z	DAILY MAXIMUM	0
01	DATE OF MAX.	
02	DAYS= > TRACE	0
03	DAYS > = 1.0"	0
04	MONTHLY TOTAL	0
05	2022 - 2023 SEASON'S TOT.	0.0

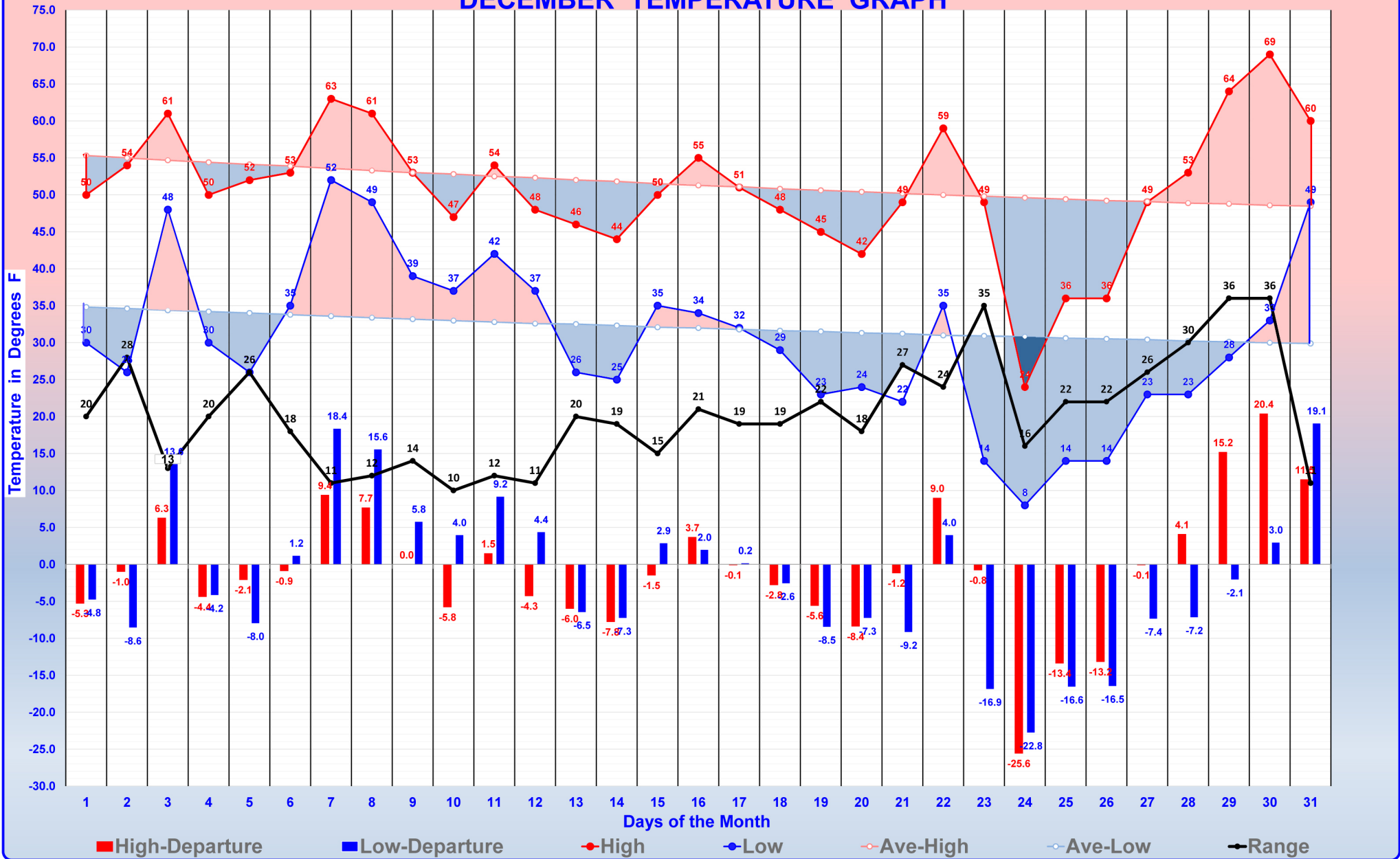
BAROMETER

6	MAXIMUM	30.59
6A	DATE	Dec-02
7	MINIMUM	29.30
7A	DATE	Dec-23
8	AVE. MONTHLY PRESSURE	30.19
CWA	NWS WARNING AREA	HENRICO

SPRINGFIELD PARK'S DECEMBER TEMPERATURE & WIND GRAPH



The Richmond International Airport DECEMBER TEMPERATURE GRAPH



STATION (Climatological) **Springfield Park** (River Station, if different) MONTH **Dec 2022**

STATE **VA** COUNTY **Henrico** RIVER

TIME (local) OF OBSERVATION RIVER TEMPERATURE **MID** PRECIPITATION **MID** STANDARD TIME IN USE

TYPE OF RIVER GAGE ELEVATION OF RIVER GAGE ZERO FLOOD STAGE NORMAL POOL STAGE

WS FORM B-91 (03-09) U.S. DEPARTMENT OF COMMERCE NATIONAL OCEANIC AND ATMOSPHERIC ADMINISTRATION NATIONAL WEATHER SERVICE

RECORD OF RIVER AND CLIMATOLOGICAL OBSERVATIONS

DATE	TEMPERATURE			PRECIPITATION													WEATHER (Observation Day)						RIVER STAGE			REMARKS <small>(SPECIAL OBSERVATIONS, ETC.)</small>										
	24 HRS ENDING AT OBSERVATION		AT OBSN	24 HR AMOUNTS		AT OB	Draw a straight line (-----) through hours precipitation was observed, and a wavy line (~~~~~) through hours precipitation probably occurred unobserved													Mark 'X' for all types occurring each day							Condition	Gage reading at ___ AM	Tendency							
	MAX	MIN		Rain, melted snow, etc. (in and hundredths)	Snow, ice pellets, hail (ins and tenths)		A.M.	NOON	P.M.	Fog	Ice pellets	Glaze	Thunder	Hail	Damaging winds	Time of occurrence if different from above																				
					1	2	3	4	5	6	7	8	9	10	11	1	2	3	4	5	6	7	8	9	10	11										
1	50	28	29	0.00	0.0	0																														The AM sky was clear to around noon then high ci
2	54	26	51	0.00	0.0	0																													The AM sky was clear. The PM sky averaged about	
3	61	45	45	0.42	0.0	0	--	--	--	--	--	--	--	--	--																			The most intense rainfall was between 0900 and 0		
4	50	29	30	0.00	0.0	0																												The AM had a heavy frozen dew with a little fros		
5	51	25	33	0.00	0.0	0																												A very heavy frost this AM then a thin but almos		
6	51	33	51	0.28	0.0	0				--	--	--	--	--	--																			Rain associated with a warm front with sprinkles		
7	62	50	59	0.17	0.0	0	--			--	--	--	--	--	--																			The AM had rain, damp and gloomy and the PM was		
8	60	48	48	0.01	0.0	0	--	--																										A warm Dec. day with a partly cloudy AM and a PM		
9	51	38	41	0.01	0.0	0	--	--																										Early AM sprinkles and some clouds until 845 the		
10	45	39	41	T	0.0	0				--																								An early AM sprinkle then a cloudy chilly day an		
11	53	40	41	T	0.0	0			--	--	--	--	--	--																				All of the precipitation was slight traces with		
12	45	32	38	0.00	0.0	0	1	2	3	4	5	6	7	8	9	10	11	1	2	3	4	5	6	7	8	9	10	11						Today was cloudy windy and cold with the wind ch		
13	46	26	26	0.00	0.0	0																													The AM max. RH was only 76%. Today had a cloudy	
14	43	24	37	0.06	0.0	0																													Cloudy all day with altostratus in the AM and st	
15	44	34	41	2.31	0.0	0	--	--	--	--	--	--	--	--	--																			Springfield Park had a 19H & 45M rainfall of 2.3		
16	54	31	31	0.00	0.0	0																													The AM was very clear with a quick increase in c	
17	51	30	36	0.00	0.0	0																													The AM was very clear then cumulus clouds came i	
18	48	26	26	0.00	0.0	0																													A few early AM clouds but very clear from 0800 t	
19	45	22	29	0.00	0.0	0																													Clear early then cirrus clouds started coming in	
20	41	20	25	0.00	0.0	0																													The minimum temperature today was 20.1 degrees F	
21	46	22	34	0.00	0.0	0																													A very clear AM and only a few cirrus until 1545	
22	57	34	43	1.26	0.0	0	1	2	3	4	5	6	7	8	9	10	11	1	2	3	4	5	6	7	8	9	10	11						A chilly rainy day with rain for 20 hrs. and 05		
23	47	11	11	0.04	0.0	0							--	--																					AM clouds started clearing at 1000 and it was cl	
24	23	6	18	0.00	0.0	0																													The minimum temperature this morning was 5.8 deg	
25	35	14	22	0.00	0.0	0																													A very clear day and warmer but still breezy wit	
26	36	12	27	0.00	0.0	0																													Some AM cirrus with an est. cloud cover to noon	
27	48	25	29	0.00	0.0	0																													Low AM RH of 58% thus no frost and no clouds see	
28	54	24	37	0.00	0.0	0																													A few thin scattered cirrus clouds during the da	
29	63	36	45	0.00	0.0	0																													Today had no dew, no clouds and was warmer with	
30	69	40	53	0.00	0.0	0																													The AM had no clouds and the PM was clear except	
31	61	52	53	0.66	0.0	0																													Heaviest fog at 0730 that cleared at 1010 and fi	

49.8 29.7 SUM 5.22

CONDITION OF RIVER AT GAGE

A. Obstructed by rough ice E. Ice gorge below gage
 B. Frozen, but open at gage F. Shore ice
 C. Upper surface smooth ice G. Floating ice
 D. Ice gorge above gage H. Pool stage

CHECK BAR (for wire weight) NORMAL CHECK BAR

READING DATE

Fog Ice pel Glaze Thund Hail Dam winds

OBSERVER

SUPERVISING OFFICE **AKQ Wakefield**

STATION INDEX NO. **44-7998-02**