

1	2	3	4	5	6	7	8	9	10	11	12	13	14	15	16	17	18	19
Feb 2021	Week Day	MAX.	TEMPERATURE °F			TEMPERATURE °F				SKY		PRECIPITATION			FROZ. NEW	PRECIP. GROUND	1st PERIOD	
			Time	MIN.	Time	RANGE	MEAN	CHANGE	SOIL	AM	PM	Liquid	1 Hr.	5 Min.			START	END
Feb-01	Mon	32.5	13:14	29.3	7:10	3.2	30.9	-0.7	39	2	2	T	T	T	T	1.6	1215	1235
Feb-02	Tue	41.3	14:28	31.9	0:01	9.4	36.6	5.7	39	2	2	0.04	0.01	T	0.6	0.9	0430	1000
Feb-03	Wed	49.6	14:50	28.4	23:46	21.2	39.0	2.4	39	2	0	T	T	T	T	T	0600	0710
Feb-04	Thu	54.5	13:43	22.7	4:51	31.8	38.6	-0.4	40	0	1	T	T	T		T	2310	2330
Feb-05	Fri	54.5	13:47	37.6	23:59	16.9	46.1	7.5	40	1	2	0.09	0.05	0.02		none	0255	0705
Feb-06	Sat	58.5	13:57	31.6	2:09	26.9	45.1	-1.0	41	1	2							
Feb-07	Sun	46.1	0:01	32.1	23:59	14.0	39.1	-6.0	42	2	1	0.81	0.29	0.03	1.9	0.6	0030	1315
Feb-08	Mon	43.9	14:18	22.8	5:41	21.1	33.4	-5.8	41	1	0					T		
Feb-09	Tue	60.6	15:29	31.3	0:02	29.3	46.0	12.6	40	2	0	0.07	0.03	0.01		None	0433	0950
Feb-10	Wed	43.8	10:52	32.5	7:05	11.3	38.2	-7.8	42	2	2	0.01	0.01	0.01			1655	2125
Feb-11	Thu	38.7	0:01	30.6	23:53	8.1	34.7	-3.5	42	2	2	0.40	0.08	0.01	1.4	None	0230	0255
Feb-12	Fri	30.7	0:01	28.5	21:22	2.2	29.6	-5.1	41	2	2	0.42	0.15	0.02	2.5	3.1	0001	0525
Feb-13	Sat	31.8	15:51	28.0	3:07	3.8	29.9	0.3	41	2	2	0.45	0.12	0.01		2.3	0001	0155
Feb-14	Sun	34.5	13:19	29.0	7:16	5.5	31.8	1.9	40	2	2	0.08	0.06	0.01		1.1	1801	1000
Feb-15	Mon	37.5	14:56	33.0	7:03	4.5	35.3	3.5	40	2	2	0.48	0.39	0.07		0.2	1730	2400
Feb-16	Tue	52.0	15:16	30.9	23:59	21.1	41.5	6.2	39	2	2	0.30	0.20	0.03		None	0001	0445
Feb-17	Wed	40.1	14:19	24.4	6:54	15.7	32.3	-9.2	40	1	0							
Feb-18	Thu	32.8	13:31	29.0	5:31	3.8	30.9	-1.4	40	2	2	0.67	0.27	0.04	0.5	0.4	0315	1645
Feb-19	Fri	37.3	16:37	28.3	21:57	9.0	32.8	1.9	39	2	2	0.24	0.09	0.01		T	0125	0645
Feb-20	Sat	40.2	14:24	21.1	6:49	19.1	30.7	-2.2	39	1	0					None		
Feb-21	Sun	41.9	14:31	16.3	6:41	25.6	29.1	-1.6	39	0	1							
Feb-22	Mon	43.1	16:36	30.1	3:12	13.0	36.6	7.5	39	2	2	0.49	0.33	0.03	T	None	0805	1520
Feb-23	Tue	63.6	14:27	30.5	7:18	33.1	47.1	10.5	38	0	0							
Feb-24	Wed	68.8	14:23	30.3	6:08	38.5	49.6	2.5	40	1	0							
Feb-25	Thu	60.4	13:58	36.5	23:58	23.9	48.5	-1.1	42	0	0							
Feb-26	Fri	47.8	10:42	32.4	3:10	15.4	40.1	-8.4	43	2	2	0.35	0.10	0.01			1655	2400
Feb-27	Sat	52.1	16:44	38.0	7:43	14.1	45.1	5.0	44	2	2	0.30	0.08	0.02			0001	1005
Feb-28	Sun	50.9	23:59	47.7	0:14	3.2	49.3	4.3	44	2	2	0.26	0.12	0.02			0155	1145

TOTAL NUMBER	1290	845		444.7	1067.2	17.7	1133	42	37	5.46	2.38	0.35	6.9	10.2	Col.26-27				
AVERAGE	28	28	28	28	28	28	28	28	28	17	17	16	5	8	DAILY AVE RH				
NORMALS	46.05	13:09	30.17	10:10	15.88	38.11	40.46	1.50	1.32	Ave. Tot.	Ave. Max	Ave. Max	Ave.Tot.	Ave. Days	74.7	Percent			
DEPARTURES	52.47		31.06		21.41	41.76	42.93	1.20	1.23	3.02	0.37	0.08	3.6	3.2	64.1	Percent			
Max. Temps. >= 70°F	68.8	High Max	47.7	High Min	38.5	49.6	12.6	44	Whole Day			0.81	0.39	0.07	2.5	3.1	Precip	24 Hr.	
2021	0	Feb-24	73.5	Feb-28	49.8	Feb-24	Feb-24	Feb-09	Feb-27	AVE.	1.41	Feb-07	Feb-15	Feb-15	Feb-12	Feb-12	Amount	0.89	
Ave.	3.1		Dep.		Dep.				Feb-28	Normal	1.21						Date	Feb. 18	
Departure	-3.1		-4.7		-2.1					Depart.	0.20						Date	Feb. 19	
Min. Temps. <= 32°F	30.7	Low Max	16.3	Low Min	2.2	29.1	-9.2	38	SKY			AM	PM	>= 0.10	INCHES	>= 1.00	INCHES	>= 2.00	INCHES
2021	22	Feb-12	33.2	Feb-21	14.3	Feb-12	Feb-21	Feb-17	Feb-23	CLEAR	4	8	12	DAYS	0	DAYS	0	DAYS	
Ave.	17.4		Dep.		Dep.					PT. CLO.	6	3	HOTTEST	49.6	Highest	Lowest	COOLEST	29.1	
Departure	4.6		-2.5		2.0					CLO.	18	17	DAY	Feb-24	Mean	Mean	DAY	Feb-21	

Days Max. <=32 °F	2	MAX.	>=85	>=80	>=75	>=70	>=65	>=60	>=55	>=50	>=45	>=40	>=35	>=30	>=25	>=20
Days Max. >=90°F	0	DAYS	0	0	0	0	1	4	5	11	13	20	24	28	28	28

20	21	22	23	24	25	26	27	28	29	30	31	32	33	34	35	36	37	38
Feb 2021	2nd PERIOD		WIND			REL. HUMIDITY		BAROMETRIC PRESSURE				GLAZE	SLEET	SNOW	FOG	K	DEW	FROST
	START	END	RUN	MAX.	TIME	MAX.	MIN.	MAX.	MIN.	AVE.	CHANGE							
Feb-01	1745	1755	95.5	16	8:47	97	93	29.83	29.67	29.75	-0.32			1				P
Feb-02	1120	1125	87.1	21	14:05	96	57	29.67	29.57	29.62	-0.13			2				P
Feb-03			82.0	21	14:26	84	28	29.92	29.65	29.79	0.16			1				P
Feb-04			50.6	15	22:46	78	19	30.08	29.86	29.97	0.18							3
Feb-05			121.0	22	8:58	90	39	29.91	29.67	29.79	-0.18						P	
Feb-06			68.4	20	12:18	70	26	30.16	29.91	30.04	0.25						P	1
Feb-07			71.5	24	0:59	96	55	30.22	29.86	30.04	0.00		1	2			P	
Feb-08			63.3	15	15:02	88	41	30.47	30.22	30.35	0.31						P	2
Feb-09			58.7	16	19:10	95	60	30.34	30.05	30.20	-0.15						P	
Feb-10			53.2	12	9:59	89	60	30.38	30.19	30.29	0.09						1	
Feb-11	0700	0800	89.6	18	16:37	96	84	30.30	30.10	30.20	-0.08		1	2			P	
Feb-12	0730	1000	85.7	11	1:32	96	93	30.33	30.23	30.28	0.08		1	3			P	P
Feb-13	0300	2000	95.4	13	6:54	96	91	30.28	30.08	30.18	-0.10	2					P	P
Feb-14			78.6	15	22:41	97	93	30.27	30.14	30.21	0.02						P	P
Feb-15			70.0	11	0:35	98	90	30.20	29.84	30.02	-0.18				2		P	
Feb-16			91.2	20	11:08	99	63	30.17	29.66	29.92	-0.11						P	
Feb-17			88.8	15	9:40	73	42	30.44	30.17	30.31	0.39						P	N
Feb-18	1955	2020	75.4	13	3:29	96	62	30.41	30.15	30.28	-0.02	2	3	1			P	P
Feb-19			25.9	13	13:32	98	91	30.18	30.07	30.13	-0.16	2					P	P
Feb-20			64.8	20	16:03	96	37	30.51	30.18	30.35	0.22						P	5
Feb-21			48.5	13	20:56	91	32	30.65	30.44	30.55	0.20						P	4
Feb-22			78.8	16	0:39	97	60	30.44	29.82	30.13	-0.41		1	1			P	N
Feb-23			81.1	23	10:52	99	32	30.04	29.75	29.90	-0.24						P	5
Feb-24			106.3	24	15:10	89	26	30.13	29.89	30.01	0.11						P	2
Feb-25			75.5	17	7:28	70	21	30.30	29.89	30.10	0.09						P	N
Feb-26			75.5	16	13:14	96	43	30.46	30.30	30.38	0.29						P	1
Feb-27			64.5	16	12:43	97	84	30.31	30.11	30.21	-0.17						P	
Feb-28	1910	2010		11	8:45	100	95	30.30	29.95	30.13	-0.09				3		P	

TOTAL NUMBER			2046.9	467		2567	1617	846.70	839.42	843.06	DAYS	3	5	8	2	0	2	7
	Feb. Wind Run		27	28	28	28	28	28	28	28	Normal	0.9	1.3	3.5	2.2	0.6	3.5	8.3
AVERAGE	Total	2046.9	75.8	16.7	11:22	91.7	57.8	30.24	29.98	30.11	Depart.	2.1	3.7	4.5	-0.2	-0.6	-1.5	-1.3
NORMALS	Miles	1960.7	69.33	19.93		85.08	42.43	30.21	29.92	30.07	Rating ▶	6	7	13	5	0	2	22
Departures	Miles	86.2	6.5	-3.3		6.6	15.3	0.03	0.06	0.04	Intensity							
MAXIMUM DATES		Dates	121.0 Feb-05	24 Feb-07 Feb-24	ESE, S 0:59 15:10	100 Feb-28	95 Feb-28	30.65 Feb-21	30.44 Feb-21	30.55 Feb-21	0.39 Feb-17	GLAZE	SLEET	SNOW	FOG	K	Dew	Frost
MINIMUM DATES		Dates	25.9 Feb-19	11 Feb-12 Feb-15	Ave. Max. Dep. -14.2	70 Feb-06 Feb-25	19 Feb-04	29.67 Feb-02	29.57 Feb-02	29.62 Feb-02	-0.41 Feb-22	5. Very Heavy 4. Heavy-Unusual 3. Moderate - Ave. 2. Light - >= Ave. 1. Very Light - Slight - Trace M - Event with intensity missing N- None No Dew Obs. P- Precip. prevent obs.						

Days Min. <=32 °F	22	MIN.	≤ 75	≤ 70	≤ 65	≤ 60	≤ 55	≤ 50	≤ 45	≤ 40	≤ 35	≤ 30	≤ 25	≤ 20	≤ 15	≤ 10
Days Min >=70°F	0	Days	28	28	28	28	28	28	27	27	24	14	5	1	0	0

Feb
2021REMARKS FOR THE MONTH
February - 2021

Feb-01	A CLOUDY COLD DAMP DAY - SNOW FLURRIES 1745-1755 AND DRIZZLE AROUND NOON-3RD PD. OF FLURRIES 1950-2135
Feb-02	A MOSTLY CLOUDY DAY SOME SUN AT 1100 AND 1300-1500-WINDY MAX. GUST 21 MPH AT 1405
Feb-03	CLEARING STARTED AT 1200 AND CLEAR SKY BY 1330-A SUNNY MILD BUT WINDY PM
Feb-04	CIRROSTRATUS CLOUDS CAME IN AT 1545-MILD DAY FOR FEB.
Feb-05	A MOSTLY CLOUDY WINDY DAY - MAX. WIND GUST OF 22 MPH AT 0858
Feb-06	ONLY A LITTLE FROST ON GRASS AND WARMEST DAY SINCE JAN. 2, 2021 WHEN IT WAS 65.3 °F
Feb-07	VERY WET SNOW FROM A FAST MOVING LOW PRESSURE WITH CLEARING SKIES BY 1430
Feb-08	AM WAS 35% CLOUDY WITH CLOUDS FROM 1030-1145 THEN PM WAS CLEAR
Feb-09	THE 2ND WARMEST DAY OF 2021-CLOUDY TO 1145 BUT PM WAS CLEAR AND MILD
Feb-10	A CLOUDY CHILLY DAY WITH LITTLE WIND AND SPRINKLES LATER IN EVENING
Feb-11	3RD PD. OF PRECIP. 0940-1240, 4TH PD. 1410-2400-A COLD CLOUDY DAY
Feb-12	A LITTLE SLEET FROM 0730-0830 AND A 3RD PD. OF PRECIP. FROM 2255-2400
Feb-13	THE GLAZE VARIED BETWEEN 0.2 AND 0.3 INCHES OVERALL ESTIMATE OF ICE 1/4 INCH-NO LOCAL DAMAGE EXCEPT FOR VERY FEW BROKEN LIMBS
Feb-14	ICE MELTED OFF TREES TODAY BUT STILL A COLD CLOUDY DAY
Feb-15	6TH DAY WITH NO SUN-EVENING FOG WITH MORE RAIN TONIGHT
Feb-16	FIRST SUN IN 7 DAYS BUT ONLY AT SHORT PERIODS IN PM-WARMEST DAY SINCE FEB. 9TH
Feb-17	MOSTLY SUNNY- AM CIRRUS FROM SUNRISE TO 0830 AND AGAIN 1030-1415-PM EST. TO BE ONLY 20-30% CLOUDY
Feb-18	ONLY A TRACE OF SNOW AT ONSET OF PRECIP.-0.5 INCH OF SLEET & 0.1 INCH OF GLAZE-FREEZING DRIZZLE AT NIGHT FROM 1755-2020 & AGAIN 2135-2150 AGAIN 2245-2350
Feb-19	MAX. GLAZE AFTER LAST NIGHT WAS 0.2 INCHES - NO SNOW OR SLEET OBSERVED-A LITTLE PM SUN
Feb-20	ONE OF 3 SUNNIEST DAYS OF FEB. - WINDY AND COLD DAY MAX. WIND CHILL 12.5 °F AT 1651
Feb-21	COLDEST SINCE JAN. 31,2019 WHEN IT WAS 11.1 °F - BEAUTIFUL FIBROUS CIRRUS CLOUDS AGAINST A DEEP BLUE SKY AT 1320
Feb-22	SLEET AND SPLOTY SNOW FLAKES FROM 1300-1310 - RAIN ENDED AT 1530 & SUN WAS OUT BY 1630 & TOTALLY CLEAR BY 1645
Feb-23	VERY HEAVY FROST-2ND WARMEST DAY OF 2021 AND FIRST TOTALLY CLEAR DAY OF FEB.
Feb-24	WARMEST DAY OF 2021-BEAUTIFUL FIBROUS CLOUDS STREAMING ACROSS A DEEP BLUE SKY IN AM-PM WAS VERY CLEAR
Feb-25	WIND SHIFTED NORTH AT 0645 BUT STILL A WARM FEB. DAY AND A VERY CLEAR DAY
Feb-26	ONLY DEW ON GRASS-CLOUDY AND MUCH COOLER
Feb-27	A RAINY AM AND A TOUCH OF SUN JUST AFTER NOON THEN BACK TO A CLOUDY GLOOMY PM
Feb-28	A RAINY AM WITH A PM FOG DEVELOPING GIVING A GLOOMY PM - THE FOG BECAME DENSE AFTER DARK WITH DRIZZLE AND LOW VISIBILITY

DATE

EXTENSION OF LENGTHY DAILY REMARKS

THE MAX. RAIN IN 24 HOURS FOR FEBRUARY WAS 0.89 INCHES FROM 5 AM OF THE 18TH TO 5 PM OF THE 19TH

The daily records for the month are listed on page # 4 and not found in the remarks.

The link below explains how observations are taken at the Glen Allen Weather Station - Note the Numbers match the column numbers on the Observation Sheet

[Rules for making Observations in 2021](#)

The Glen Allen Station had 21 Records or Record Ties in FEBRUARY 2021

1	The daily temperature range on the 1st was 3.2°F, a new 12-year LOW daily temperature range record for the date - the old record was 11.9°F in 2019. The daily temperature range on the 2nd was 9.4°F, a new 12-year LOW daily temperature range record for the date - the old record was 12.9°F in 2016.
2	
3	
4	
5	
6	
7	The daily precipitation on the 7th was 0.81 inches, a new 12-year HIGH daily precipitation record for the date - the old record was 0.2 inches in 2020. The daily greatest snow on the 7th was 1.9 inch/es a new 12 - year daily greatest snow record for the date - the old record was 0 inches,
8	
9	The maximum temperature on the 9th was 60.6°F, a new 12-year daily HIGH maximum temperature record for the date - the old record was 59.1°F in 2017.
10	
11	The daily greatest snow on the 11th was 1.4 inch/es a new 12 - year daily greatest snow record for the date - the old record was 0.5 inches, in 2012.
12	The daily temperature range on the 12th was 2.2°F, a new 12-year LOW daily temperature range record for the date - the old record was 6.3°F in 2019.
13	The daily temperature range on the 13th was 3.8°F, a new 12-year LOW daily temperature range record for the date - the old record was 6.3°F in 2018.
14	The daily temperature range on the 14th was 5.5°F, a new 12-year LOW daily temperature range record for the date - the old record was 18°F in 2012. The daily precipitation on the 14th was 0.08 inches, a new 12-year HIGH daily precipitation record for the date - the old record was 0.01 inches in 2016 and 2015.
15	The daily temperature range on the 15th was 4.5°F, a new 12-year LOW daily temperature range record for the date - the old record was 9.9°F in 2016. The daily precipitation on the 15th was 0.48 inches, a new 12-year HIGH daily precipitation record for the date - the old record was 0.4 inches in 2016.
16	
17	
18	The maximum temperature on the 18th was 32.8°F, a new 12-year cold daily maximum temperature record for the date - the old record was 38.9°F in 2015. The daily temperature range on the 18th was 3.8°F, a new 12-year LOW daily temperature range record for the date - the old record was 16°F in 2009. The daily precipitation on the 18th was 0.67 inches, a new 12-year HIGH daily precipitation record for the date - the old record was 0.19 inches in 2019 and 2009. The daily greatest snow on the 18th was 0.5 inch/es a new 12 - year daily greatest snow record for the date - the old record was 0.1 inches, in 2009.
19	The daily temperature range on the 19th was 9°F, a new 12-year LOW daily temperature range record for the date - the old record was 13°F in 2018 and 2013.
20	
21	
22	The daily precipitation on the 22nd was 0.49 inches, a new 12-year HIGH daily precipitation record for the date - the old record was 0.44 inches in 2019. The daily greatest snow on the 22nd was T, and EQUALED the, 12-year HIGH daily greatest snow record for the date - the old record was set in 2013.
23	
24	The daily temperature range on the 24th was 38.5°F, a new 12-year HIGH daily temperature range record for the date - the old record was 36°F in 2012.
25	
26	
27	
28	The daily temperature range on the 28th was 3.2 °F, a new 12-year LOW daily temperature range record for the date - the old record was 15°F in 2013.

Glen Allen February 2021

February's mean temperature was 38.1°F, a -3.7°F departure, our 3rd coldest February. The warmest day was on the 28th as the daily mean was 49.3°F. There were 22 days below freezing a departure of 4.6 days; the average is 17.4 days. The 10th to 15th and 17th to 22th were cold. Max. temps. had a greater departure due to the cloudiness.

The 5.46 inches of precipitation makes this February the wettest on record with a departure of 2.44 inches. The maximum 24-hour precipitation amount was only 0.89 inches. February had 17 days with measurable precipitation which is the most on record. This month's relative humidity was 74.7% the 2nd highest for February. The average temperature range was 15.9°F which was the lowest on record for February. The lowest range was only 2.2 °F on the 12th.

The maximum wind gust during February was only 24 mph which was a new low reading for the month that occurred on February 7th and 24th. The highest barometer recorded for the month was 30.65 inches, on the 21st and lowest was 29.57 inches on the 2nd. Springfield Park had 6.9 inches of snow in February a +3.3 inch departure. This is the first Feb. since 2015 to have more than the average snowfall for the month.

Winter Season December, January, February 2020-21											
Month	TEMPERATURE °F					PRECIPITATION Inches			SNOWFALL inches		
	Max.	Min.	Mean	12Yr.Ave.	Dep.	Actual	12Yr.Ave.	Dep.	Actual	12Yr.Ave.	Dep.
Dec.	51.4	30.9	41.2	42.4	-1.2	5.99	4.11	1.88	0.2	5.3	-5.1
JAN	48.4	28.7	38.5	37.7	0.9	3.01	3.31	-0.30	4.6	4.9	-0.3
FEB	46.1	30.2	38.1	41.8	-3.7	5.46	3.02	2.44	6.9	3.6	3.3
SUM	145.8	89.8	117.8	121.8	-4.0	14.46	10.44	4.02	11.7	13.8	-2.1
AVE.	48.6	29.9	39.3	40.6	-1.3	4.82	3.48	1.34	3.9	4.6	-0.7

Glen Allen had 14.46 inches of precipitation the 3rd wettest winter in the past 12 winters with a surplus of 4.33 inches. This was the wettest winter since 2009-2010 when 16.52 inches of precipitation was recorded. Average is 10.13 inches. Temperature wise this winter was 0.7°F colder than average. The warmest winter was 44.2°F in 2016-17 and the coldest winter was 2009-10 when the average temperature was 35.9°F.

Richmond International Airport

The Richmond Airport had 4 daily records for February on the 1st, 12th, 13th, 18th all for minimum temp. ranges. The 2°F temp. range on the 12th was rare; no other February in the past 124 years has had a lower range. Because of the cloudiness and precip. the average temp. range was only 14.7°F which was the 5th lowest since 1897.

The Airport's mean maximum temperature of 46.0°F was a -5.3°F departure. The maximum temp. this month was only 68°F on the 24th. The minimum temperature this month was 19°F on the 21st. The average minimum temp. was 31.3°F a departure of 0.8°F. February's mean temperature was 38.6°F a dep. of negative 2.3°F and the 46th coldest Feb.

The total precip. for February was 5.12 inches making it the 12th wettest February since 1887 with a 2.36 inch departure. Feb. had 16 days with measurable precipitation; only 1891 and 1922 had more and the record is 19 days. February had 2.8 inches of snow for the month which was a -0.6 inch departure.

RICHMOND INT. AIRPORT WINTER SEASON Dec, Jan, Feb									
Winter Season Months	Mean Temp.	30 - YR Ave.	Temp. Dep.	Total Prec.	30 - YR Ave.	Prec. Dep.	Total Snow	30 - YR Ave.	Snow Dep.
	°F	°F	°F	Inches	Inches	Inches	Inches	Inches	Inches
DEC	41.3	41.0	0.3	6.70	3.26	3.44	1.0	2.1	-1.1
JAN	39.0	37.9	1.1	3.58	3.04	0.54	3.2	3.9	-0.7
FEB	38.6	40.9	-2.3	5.12	2.76	2.36	2.8	3.4	-0.6
SUM	118.9	119.8	-0.9	15.40	9.06	6.34	7.0	9.4	-2.4
AVE	39.6	39.9	-0.3	5.13	3.02	2.11	2.3	3.1	-0.8

Richmond had its 67rd warmest winter since 1880 and the 4th wettest winter in the past 148 winters. The Airport had 15.40 inches of precipitation this winter which was a 6.34 inch surplus. The winter season was the wettest winter since 1978-79 when 15.93 inches of precipitation was recorded.

ACON - VA/NC/SC

The Atlantic Coast Observer Network: Virginia, North Carolina, South Carolina

February 2021

Station summary of Climatological Data

Observer: Lowell L. Koontz Acon Station ID: West Henrico - Glen Allen, VA

Observation Times: Temps Recorded 2400 Precipitation Recorded 2400

TEMPERATURE °F

A	MEAN MAXIMUM	46.05
B	MEAN MINIMUM	30.17
C	MEAN MONTHLY	38.11
C1	MEAN TEMP DEP.	-3.7
D	MAXIMUM	68.8
E	DATE(s) OF MAX.	Feb-24
F	MINIMUM	16.3
G	DATE(s) OF MIN.	Feb-21
H	# DAYS MAX. > = 90°	0
I	# MAX. < = 32°	2
J	MIN. < = 32°	22
K	MIN. < = 0°	0
K1	AVE RELATIVE HUMIDITY	74.7

WIND MPH

L	MAX. GUST	24
M	DIRECT. OF GUST	ESE, S
N	DATE	07 th & 24 th
	TIME	0059, 1510

NUMBER DAYS WITH -

O	THUNDER	0
P	HAIL	0
Q	GLAZE	3
R	ICE PELLETS (SLEET)	5
R1	DENSE FOG < = 1/4 MILE	1

PRECIPITATION INCHES

T	MONTH TOTAL	5.46
U	CALENDAR DAY MAX.	0.81
U1	DATE OF MAX.	Feb-07
V	24-HR. PERIOD MAX.	0.89
V1	DATE(S) OF MAX. PD.	Feb 18 th -19 th
W	# DAYS > = 0.01"	17
X	# DAYS > = 1.00"	0
Y	YR. TO DATE TOT.	8.47
	MAX. 1 HR. PRECIP.	0.39
	MAX. 5 MIN PRECIP.	0.07

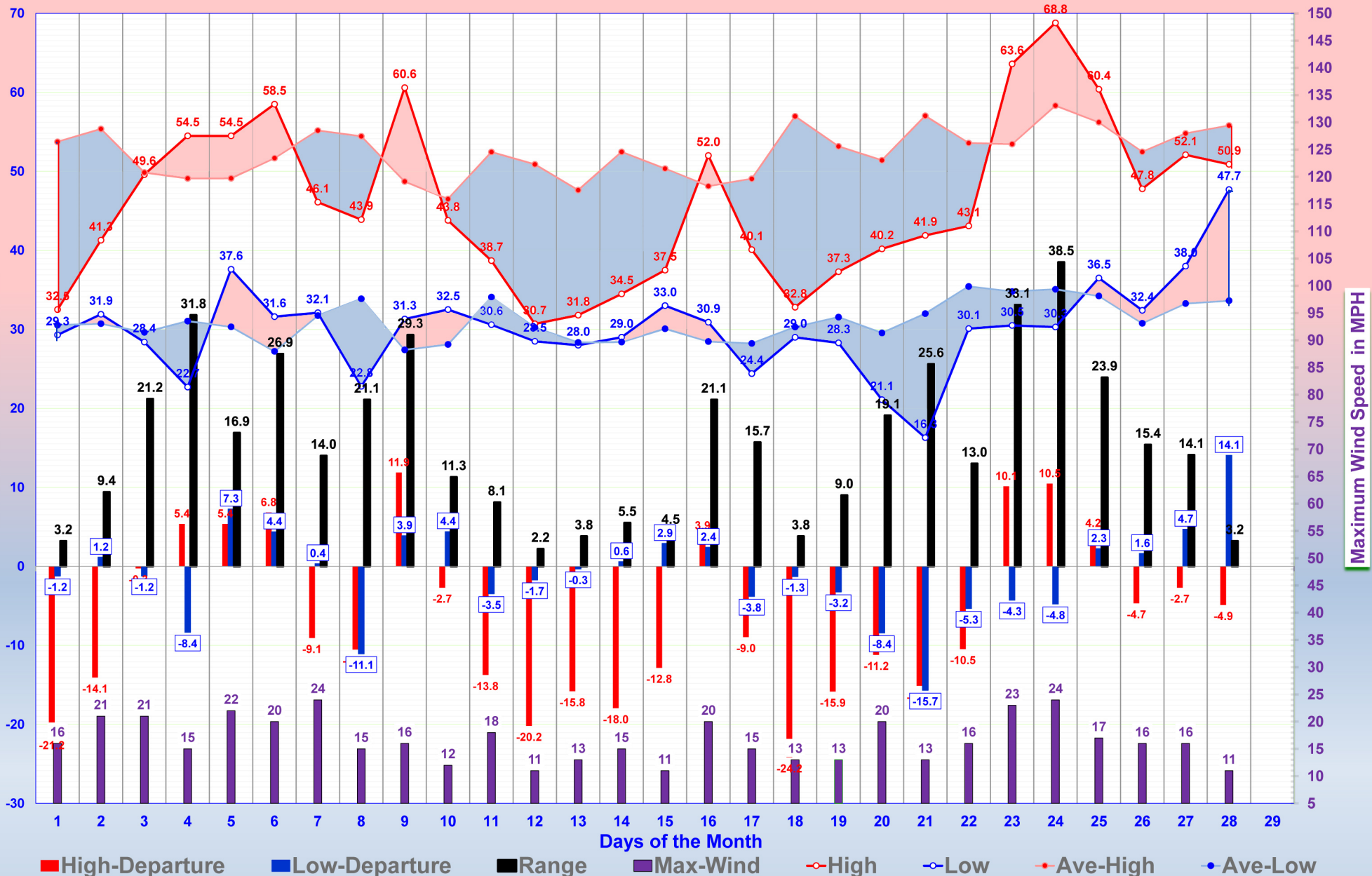
SNOWFALL INCHES

Z	DAILY MAXIMUM	2.5
1	DATE OF MAX.	Feb-12
2	DAYS= > TRACE	8
3	DAYS > = 1.0"	3
4	MONTHLY TOTAL	6.9
5	2020- 2021 SEASON'S TOT.	11.7

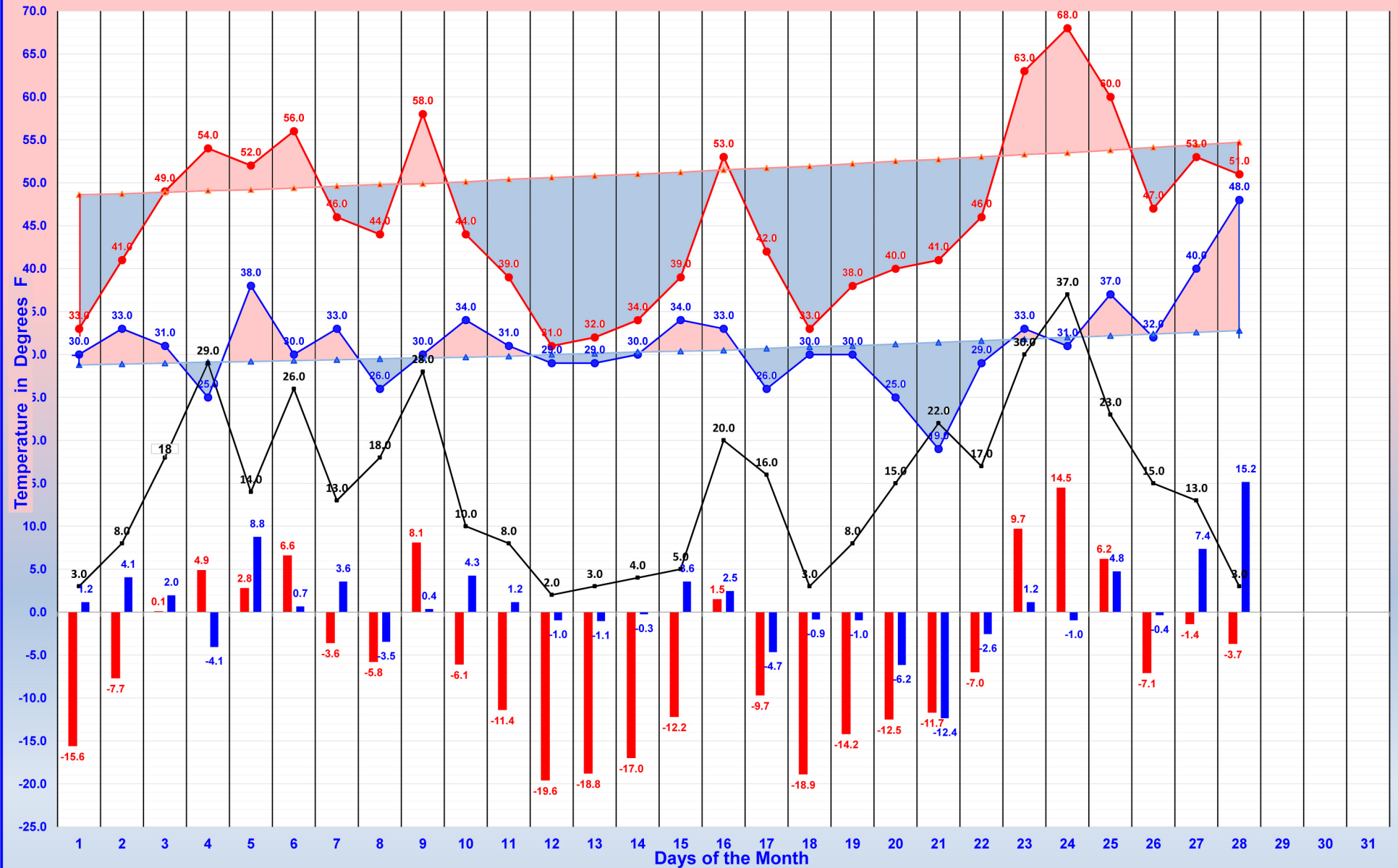
BAROMETER

6	MAXIMUM	30.65
6A	DATE	Feb-21
7	MINIMUM	29.57
7A	DATE	Feb-02
8	AVE. MONTHLY PRESSURE	30.11
CWA	NWS COUNTY WARNING AREA	Henrico

SPRINGFIELD PARK'S FEBRUARY TEMPERATURE & WIND GRAPH



The Richmond International Airport FEBRUARY TEMPERATURE GRAPH



■ High-Departure
 ■ Low-Departure
 ● High
 ● Low
 ▲ Ave-High
 ▲ Ave-Low
 — Range