


1 2 3 4 5 6 7 8 9 10 11 12 13 14 15 16 17 18 19

Jan 2021	Week Day	TEMPERATURE °F				TEMPERATURE °F				SKY		PRECIPITATION			FROZ. PRECIP.		1st PERIOD	
		MAX.	Time	MIN.	Time	RANGE	MEAN	CHANGE	SOIL	AM	PM	Liquid	1 Hr.	5 Min.	NEW	GROUND	START	END
Jan-01	Fri	43.5	0:01	35.1	22:00	8.4	39.3	-11.0	45	2	2	0.55	0.25	0.03			0955	1000
Jan-02	Sat	65.3	14:04	35.6	0:01	29.7	50.5	11.2	44	1	2							
Jan-03	Sun	47.7	1:19	38.9	23:54	8.8	43.3	-7.2	45	2	2	0.57	0.32	0.04			0125	0720
Jan-04	Mon	46.6	10:46	35.1	7:42	11.5	40.9	-2.5	46	2	2	T	T	T			2125	2135
Jan-05	Tue	49.2	14:15	36.6	5:13	12.6	42.9	2.1	46	2	2	T	T	T			1615	1620
Jan-06	Wed	47.4	13:52	29.2	23:59	18.2	38.3	-4.6	46	2	1							
Jan-07	Thu	48.6	14:08	23.9	7:32	24.7	36.3	-2.1	44	0	0							
Jan-08	Fri	46.2	14:03	31.5	23:59	14.7	38.9	2.6	44	2	0							
Jan-09	Sat	47.6	14:30	26.6	6:06	21.0	37.1	-1.8	43	0	0							
Jan-10	Sun	53.1	14:02	24.9	7:21	28.2	39.0	1.9	42	0	0							
Jan-11	Mon	44.9	14:58	25.9	2:46	19.0	35.4	-3.6	42	2	2	T	T	T			1340	1755
Jan-12	Tue	52.6	14:19	30.3	7:40	22.3	41.5	6.1	42	0	0							
Jan-13	Wed	55.4	14:27	24.8	7:30	30.6	40.1	-1.4	42	0	0							
Jan-14	Thu	57.0	13:33	29.3	7:44	27.7	43.2	3.1	42	1	0							
Jan-15	Fri	55.9	13:06	30.3	3:47	25.6	43.1	0.0	42	1	2	0.10	0.04	0.01			1515	2115
Jan-16	Sat	44.4	0:01	29.4	23:29	15.0	36.9	-6.2	42	2	2	0.05	0.05	0.01			1340	1605
Jan-17	Sun	50.8	13:27	29.4	1:34	21.4	40.1	3.2	43	0	1							
Jan-18	Mon	49.8	12:34	30.1	6:01	19.7	40.0	-0.1	43	2	2							
Jan-19	Tue	57.2	14:23	27.1	7:21	30.1	42.2	2.2	42	0	1							
Jan-20	Wed	51.2	13:11	26.8	23:38	24.4	39.0	-3.2	42	0	0							
Jan-21	Thu	58.4	14:38	25.8	3:22	32.6	42.1	3.1	42	1	0							
Jan-22	Fri	55.9	14:42	29.6	23:58	26.3	42.8	0.6	42	0	1							
Jan-23	Sat	41.1	13:48	23.2	23:49	17.9	32.2	-10.6	42	0	0							
Jan-24	Sun	44.4	14:46	17.2	7:20	27.2	30.8	-1.4	40	0	2	T	T	T	T	None	2010	2015
Jan-25	Mon	43.3	13:20	36.1	0:04	7.2	39.7	8.9	40	2	2	0.61	0.25	0.03			1340	2130
Jan-26	Tue	42.4	16:40	34.2	7:34	8.2	38.3	-1.4	41	2	2	0.39	0.17	0.02			0001	0950
Jan-27	Wed	48.6	12:49	36.1	23:58	12.5	42.4	4.1	42	2	2							
Jan-28	Thu	40.0	14:54	25.2	21:53	14.8	32.6	-9.8	43	1	0	0.04	0.02	0.01	0.4	None	0205	0520
Jan-29	Fri	37.8	14:37	17.2	7:15	20.6	27.5	-5.1	41	0	0							
Jan-30	Sat	39.8	14:50	14.9	6:32	24.9	27.4	-0.2	40	0	1							
Jan-31	Sun	33.8	2:03	29.4	6:44	4.4	31.6	4.3	39	2	2	0.70	0.14	0.08	4.2	2.5	0240	0320
TOTAL		1500		890		610.2	1194.8	-18.7	1319	31	33	3.01	1.24	0.23	4.6	2.5	Column 26 - 27	
NUMBER		31	31	31	31	31	31	31	31	31	31	8	8	8	2	1	DAILY AVE RH	
AVERAGE		48.38	12:19	28.70	11:20	19.68	38.54		42.55	1.00	1.06	Ave. Tot.	Ave.Max	Ave.Max	Ave.Tot.	Ave.Days	70.8	Percent
NORMALS		47.57		27.76		19.81	37.66		42.23	1.13	1.13	3.31	0.37	0.09	4.9	2.9	66.5	Percent
DEPARTURES		0.82		0.94		-0.13	0.88		0.32	-0.13	-0.07	-0.30	-0.05	-0.01	-0.3	-0.4	4.2	Percent
MaxTemps. >= 70°F		65.3	Ave.HighMax	38.9	Ave.HighMin	32.6	50.5	11.2	46	Whole	Day	0.70	0.32	0.08	4.2	2.5	Precip	24 Hr.
2021	0	Jan-02	68.3	Jan-03	47.6	Jan-21	Jan-02	Jan-02	Jan-04	Ave.	1.03	Jan-31	Jan-03	Jan-31	Jan-31	Jan-31	Amount	1.00
Ave.	0.8		Dep.		Dep.				Jan-05	Normal	1.13						Date	Jan '25
Departure	-0.8		-3.0		-8.7				Jan-06	Depart.	-0.10						Date	Jan '26
MinTemps. <= 32°F		33.8	Ave.LowMax	14.9	Ave.LowMin	4.4	27.4	-11.0	39	SKY	AM	PM	≥ 0.10 INCHES		≥ 1.00 INCHES		≥ 2.00 INCHES	
2021	23	Jan-31	27.2	Jan-30	8.7	Jan-31	Jan-30	Jan-01	Jan-31	CLEAR	13	12	6 DAYS		0 DAYS		0 DAYS	
Ave.	21.3		Dep.		Dep.					PT. CLO.	5	5	HOTTEST	50.5	Highest	Lowest	COOLEST	27.35
Departure	1.7		6.6		6.2					CLO.	13	14	DAY	Jan-02	Mean	Mean	DAY	Jan-30
Days Max. <=32 °F	0				MAX.	≥80	≥75	≥70	≥65	≥60	≥55	≥50	≥45	≥40	≥35	≥30	≥25	≥20
Days Max. >=90°F	0				DAYS	0	0	0	0	1	6	12	21	29	30	31	31	31

PAGE #2		Jan	2021	West Henrico Co. - Glen Allen Weather Center 37.65537° N. 77.5693° W. - Koontz															
		21	22	23	24	25	26	27	28	29	30	31	32	33	34	35	36	37	38
Jan 2021	2nd PERIOD		WIND			REL. HUMIDITY		BAROMETRIC PRESSURE											
	START	END	RUN	MAX.	TIME	MAX.	MIN.	MAX.	MIN.	AVE.	CHANGE	GLAZE	SLEET	SNOW	FOG	DEW	FROST		
Jan-01	1310	1405	82.7	16	4:35	98	68	30.48	29.99	30.24	0.01						N		
Jan-02			57.6	16	5:46	99	61	30.09	29.90	30.00	-0.24						P		
Jan-03	1000	1155	63.8	15	2:36	97	82	30.13	29.88	30.01	0.01				2		P		
Jan-04	2240	2255	26.6	10	10:30	100	75	30.08	29.96	30.02	0.02				3		P		
Jan-05			38.3	16	16:29	98	60	30.05	29.89	29.97	-0.05						P		
Jan-06			72.3	20	11:42	89	53	30.21	30.05	30.13	0.16						2		
Jan-07			31.9	14	10:54	97	49	30.27	30.14	30.21	0.07							5	
Jan-08			81.9	17	13:12	85	52	30.14	29.86	30.00	-0.20						N		
Jan-09			101.0	20	9:56	81	27	30.15	29.86	30.01	0.00							2	
Jan-10			29.5	13	11:21	91	34	30.35	30.14	30.25	0.24							3	
Jan-11	1930	2010	38.1	11	14:39	90	58	30.36	30.22	30.29	0.04							3	
Jan-12			25.9	10	10:06	97	49	30.22	30.09	30.16	-0.13							2	
Jan-13			42.0	13	14:05	97	30	30.14	29.88	30.01	-0.15							4	
Jan-14			38.6	8	12:12	96	34	29.91	29.80	29.86	-0.15							3	
Jan-15			73.8	18	12:13	97	54	29.89	29.64	29.77	-0.09							4	
Jan-16	1750	1755	53.8	16	17:56	98	86	29.76	29.54	29.65	-0.12				4		P		
Jan-17			101.4	18	11:32	86	46	29.89	29.76	29.83	0.18							2	
Jan-18			69.5	19	13:30	89	42	30.13	29.80	29.97	0.14							1	
Jan-19			69.2	22	14:12	84	40	30.25	30.09	30.17	0.21							2	
Jan-20			70.4	22	10:18	87	31	30.15	29.96	30.06	-0.12							1	
Jan-21			76.6	17	11:42	84	41	30.08	29.70	29.89	-0.16							N	
Jan-22			85.4	17	11:31	78	35	30.02	29.77	29.90	0.00						N		
Jan-23			78.9	23	11:53	89	34	30.35	30.01	30.18	0.29							3	
Jan-24	2045	2100	34.4	13	20:08	85	32	30.38	30.16	30.27	0.09			1				2	
Jan-25			49.6	12	21:38	96	61	30.16	29.94	30.05	-0.22						P		
Jan-26			43.5	11	2:19	97	92	30.01	29.82	29.92	-0.14				1		P		
Jan-27			75.4	17	11:34	99	65	30.12	29.92	30.02	0.11				2		4		
Jan-28			138.2	26	7:40	92	35	30.33	30.05	30.19	0.17			1				P	
Jan-29			54.1	18	12:34	81	33	30.39	30.27	30.33	0.14							2	
Jan-30			24.5	9	10:28	91	34	30.44	30.31	30.38	0.05							4	
Jan-31	0405	1240	75.0	14	20:15	97	50	30.31	29.83	30.07	-0.31	1	1	4				P	
TOTAL			1903.9	491		2845	1543	935.24	928.23	931.74		COUNT	1	1	3	5	0	2	16
NUMBER	Mar. Wind Run		31	31	31	31	31	31	31	31		NORMAL	1.0	1.1	3.8	3.1	0.5	3.4	11.1
AVERAGE	Total		1903.9	61.42	15.84	11:55	91.77	49.77	30.17	29.94	30.06	DEPART.	0.0	-0.1	-0.8	1.9	-0.5	-1.4	4.9
NORMALS	Miles		1939.6	62.57	18.71		85.78	46.41	30.24	29.96	30.10	Rating ▶	1	1	6	12	0	6	43
DEPARTURES	Miles		-35.7	-1.15	-2.87		6.00	3.36	-0.07	-0.01	-0.04	Intensity	GLAZE	SLEET	SNOW	FOG	R	Dew	Frost
MAXIMUM DATES		Dates	138.2	26	North	100	92	30.48	30.31	30.38	0.29	GLAZE	SLEET	SNOW	FOG	R	Dew	Frost	
		1	Jan-28	Jan-28	7:40	Jan-04	Jan-26	Jan-01	Jan-30	Jan-30	Jan-23								
		2			Wind														
		3			Ave. Max.														
Min. Temps. >= 70°F		Dates	24.5	8	34.8	78	27	29.76	29.54	29.65	-0.31								
2021		0	Jan-30	Jan-14	Dep.	Jan-22	Jan-09	Jan-16	Jan-16	Jan-16	Jan-31								
Ave.		0.0																	
Departure		0.0			-8.8														
Days Min. <=32 °F		23	MIN.	≤ 75	≤ 70	≤ 65	≤ 60	≤ 55	≤ 50	≤ 45	≤ 40	≤ 35	≤ 30	≤ 25	≤ 20	≤ 15	≤ 10	≤ 5	
Days Min >=70°F		0	DAYS	31	31	31	31	31	31	31	31	26	22	8	3	1	0	0	

Jan
2021

REMARKS FOR THE MONTH

January - 2021

Jan-01	3RD PD. OF PRECIP. 1455-1515, 4TH PD. 1620-2255
Jan-02	AM MANY CIRRUS CLOUDS EST. 60% CLOUDY, PM THICKER CLOUDS AFTER 1515, PM EST. 75% CLOUDY
Jan-03	3RD PD. OF PRECIP. 1240-1350 THEN OCCASIONAL DRIZZLE-VISIBILITY CUT DURING HEAVY DRIZZLE
Jan-04	FOG HEAVIEST AT 0750-ONLY SUN TODAY BET. 0930-1050
Jan-05	WARMER BUT ANOTHER MOSTLY CLOUDY DAY-LIGHTEST OF SPRINKLES BET. 1615-1620, VIRGA SEEN ALOFT
Jan-06	BREEZE DURING NIGHT REDUCED CONDENSATION-CLEARING STARTED BY 1345 AND MOSTLY CLEAR BY 1430-EST. 50% CLEAR
Jan-07	A VERY CLEAR DAY WITH NEAR NORMAL TEMPS.
Jan-08	SNOW RAIN MIX STAYED TO SW AND S OF RICHMOND, CLEARING STARTED AT 1215 AND CLEAR BY 1300 WITH SOME CIRRUS AFTER 1500 & MID LEVEL CLOUDS BUT CLEAR AGAIN BY 1715
Jan-09	SOME AM CIRRUS BUT A VERY CLEAR PM AND BREEZY DAY-MAX. WIND GUST 20 MPH FROM NNW AT 0956
Jan-10	A VERY CLEAR AND SUNNY DAY WITH A LITTLE ABOVE AVERAGE TEMPS.
Jan-11	ONLY DAY COLDER WAS FIRST OF MONTH-A CLOUDY, COLD DAMP DAY WITH PM SPRINKLES
Jan-12	FROZEN RAIN AND FROST ON GRASS-DAY WAS SUNNY WITH LITTLE WIND
Jan-13	ANOTHER VERY CLEAR SUNNY AND MILD DAY
Jan-14	10 DEGREES ABOVE NORMAL-WARM FOR MID-JANUARY-AM CIRRUS
Jan-15	CLOUDS CAME IN AT 1300-SPRINKLES STARTED AT 1515
Jan-16	HEAVY FOG AT 0800 BUT CLEARING BY 0900
Jan-17	A BREEZY DAY WITH INCREASING CLOUDS
Jan-18	CLOUDY DAY AND BREEZY WITH A CHILLY PM BECAUSE OF WIND CHILL-AM EST. 70% CLOUDY
Jan-19	A CLEAR AM WITH CLOUDS COMING IN AT 1250 AND CLOUDY BY 1500-PM EST. 50% CLOUDY
Jan-20	A BREEZY MOSTLY CLEAR DAY WITH A LOW DEW POINT OF 19.2 °F AT 1706
Jan-21	CLOUDS STARTED TO CLEAR BY 1030 AND WAS CLEAR BY 1045 WITH A VERY CLEAR PM-AM EST. 65% CLOUDY
Jan-22	VERY CLEAR AM WITH CLOUDS COMING IN AT 1130 AND MOSTLY CLOUDY FROM 1145-1300
Jan-23	LOW WIND CHILL FACTOR OF 11.3 °F AT 2105-VERY CLEAR SUNNY BUT COLD DAY
Jan-24	COLDEST SINCE JAN. 31, 2019 WHEN IT WAS 11.1 °F -DRY AIR MIN. DEW POINT 11.8 °F AT 0119-OTHER SNOW FLURRIES 1655-1715 AND A FEW OTHER FLURRIES BEFORE 2010 BUT
Jan-25	ALTOCUMULUS IN AM THEN CLOUDY ALL DAY WITH A PM OF COLD RAIN
Jan-26	MOST OF RAIN OVER BY 0700 BUT DRIZZLE FOLLOWED TO 0950
Jan-27	ONLY BREEZY FROM 1000-1300 THEN CLOUDY MOST OF THE DAY-SOME SUN NOON TO 1330
Jan-28	CLOUDS CLEARED BY 1030 AND BECAME SUNNY BUT COLD WITH WIND CHILL FACTOR-MAX. WIND 26 MPH AT 0740 AND MIN. WIND CHILL WAS 13.2 °F AT 1557
Jan-29	FOR A SUNNY CLEAR DAY IT WAS VERY COLD WITH A MIN. WIND CHILL OF 9.2 °F AT 1728
Jan-30	LOWEST MIN. TEMP. SINCE JAN. 31, 2019 WHEN IT WAS 11.1 °F -A VERY CLEAR AM SKY-SNOW FORECAST FOR UP TO 4 INS. TOMORROW FOR RICHMOND
Jan-31	SNOW STARTED SO LIGHT THAT THE PRECIP SENSOR WAS LATE RECORDING THE START- 3RD PD 1410 TO 2000 - SOME LIGHT DRIZZLE BETWEEN THE 2ND & 3RD PRECIP. PERIODS.

DATE

EXTENSION OF LENGTHY DAILY REMARKS

Jan-24 SO LIGHT IT WAS NOT RECORDED ON PRECIP. SENSOR

The daily records for the month are listed on page # 4 and not found in the remarks.

The link below explains how observations are taken at the Glen Allen Weather Station - Note the Numbers match the column numbers on the Observation Sheet

[Rules for making Observations in 2021](#)

DAILY RECORDS FOR THE MONTH

Jan

2021

The Glen Allen Station had 7 Records or Record Ties in January 2021

1	The daily precipitation on the 1st was 0.55 inches, a new 12 year HIGH daily precipitation record for the date - the old record was 0.16 inches in 2013.
2	The maximum temperature on the 2nd was 65.3°F, a new 12-year daily HIGH maximum temperature record for the date - the old record was 60.6°F in 2020.
	The daily temperature range on the 2nd was 29.7°F, a new 12-year HIGH daily temperature range record for the date - the old record was 28.8°F in 2020.
3	
4	
5	
6	
7	
8	
9	
10	
11	
12	
13	
14	
15	
16	
17	
18	
19	
20	
21	
22	
23	
24	
25	The daily temperature range on the 25th was 7.2°F, a new 12-year LOW daily temperature range record for the date - the old record was 12°F in 2013.
26	
27	
28	
29	
30	
31	The daily temperature range on the 31st was 4.4°F, a new 12-year LOW daily temperature range record for the date - the old record was 11°F in 2011.
	The daily greatest snow on the 31st was 4.2 inches, and is a new 12-year daily greatest snow record for the date - the old record was 0.7 inches, in 2010.
	The daily precipitation on the 31st was 0.70 inches, and EQUALED the, 12-year HIGH daily precipitation record for the date - the old record was set in 2013.

January 2021 Springfield Park, Glen Allen, Virginia

January was above average most of the first 22 days and was below average the 23rd to the 31st. Jan ended up just a little above average. This is clearly shown on both graphs for January. The mean temp. for January was 38.5°F which was a departure of only 0.9°F and the 5th warmest on record of the past 12 years. The highest daily mean for Jan. was 50.5°F on the 2nd and the 2nd coolest on record for Jan. The average minimum temperature was 28.7°F a 0.9°F departure for January. The highest minimum of only 38.9°F on the 3rd was a -8.7°F departure. The highest maximum of 65.3°F on the 2nd was a -3°F departure for January. The average ground temperature at one foot for January was 42.2°F, only a 0.3°F departure for the month. There were 23 days the minimum temperature was below freezing during the month; the average is 21.3. The minimum of 14.9°F on the 30th was the lowest minimum for the month, an 8.7°F departure. The 32.5°F temperature range on the 21st was the largest temperature range for January and the 4.4°F was the least on the 31st.

The highest barometric pressure was only 30.48 inches on January 1st which was the 3th lowest maximum pressure ever recorded at this station. The lowest barometer was only 29.54 on the 16th which is the 2nd highest min. pressure on record for January. The Springfield Park station broke only seven 12-year daily records which was much below average for January. The Airport had no daily records.

The snowfall for January was 4.6 inches of snow which was a -0.3-inch departure. This was the most snow in January since 2018. The maximum wind for the month was only 26 mph on the 28th which tied for the lowest on record. January had only 8 days with measurable precipitation which tied for the least on record. The total precipitation for January was 3.01 inches which was only a -0.30 departure.

The Richmond International Airport

The mean temperature was 39.0°F with a departure of 1.1°F. This was the 50th warmest Jan since 1897. The average maximum temp. was 48.3°F, a departure of 0.9°F. The average minimum temperature was 29.7°F which was a 1.4°F departure. The minimum temp. was 32°F or below on 22 days. The highest min. of Jan. was 39°F on the 3rd and only 9 years since 1897 have had cooler high min. temp. for Jan. The lowest is 30°F recorded in January 1977 which was an extremely cold month. The highest temperature for January was 66°F on the 2nd which was the lowest for Jan since 2016. The minimum temperature for January was 17°F on the 30th. The 33°F range on the 21st was the highest temp. range for January and the lowest was 3°F recorded on the 31st. Only ten times since 1897 has the daily temperature range been less in January.

The Airport had eleven days with measurable precipitation giving 3.58 inches of precipitation. This was a departure of 0.53 inches and was the 49th wettest January since 1887. The Airport had 3.0 inches of snow on the 31st and 0.2 inches on the 28th. The total of 3.2 inches is the most in January since 2018 when a total of 5.3 inches was recorded. The frozen precipitation departure for January was -0.7 inches. The Airport had no daily records for the month.

ACON - VA/NC/SC

The Atlantic Coast Observer Network: Virginia, North Carolina, South Carolina

January 2021

Station summary of Climatological Data

Observer: Lowell L. Koontz West Henrico - Glen Allen, VA

Observation Times: Temps Recorded 2400 Precipitation Recorded 2400

TEMPERATURE °F

A	AVE. MAXIMUM	48.38
B	AVE. MINIMUM	28.70
C	MEAN MONTHLY	38.54
C1	MEAN TEMP DEP.	0.9
D	MAXIMUM	65.3
E	DATE(s) OF MAX.	Jan-02
F	MINIMUM	14.9
G	DATE(s) OF MIN.	Jan-30
H	# DAYS MAX. > = 90°	0
I	# MAX. < = 32°	0
J	MIN. < = 32°	23
K	MIN. < = 0°	1
K1	AVE RELATIVE HUMIDITY	70.8

WIND MPH

L	MAX. GUST	26
M	DIRECT. OF GUST	North
N	DATE	Jan-28
	TIME	7:40

NUMBER DAYS WITH -

O	THUNDER	0
P	HAIL	0
Q	GLAZE	1
R	ICE PELLETS (SLEET)	1
R1	DENSE FOG < = 1/4 MILE	2

S 2400 HOUR - PRECIPITATION INCHES

T	MONTH TOTAL	3.01
T1	PRECIP. Dep. From Ave.	-0.30
U	CALENDAR DAY MAX.	0.70
U1	DATE OF MAX.	Jan-31
V	24-HR. PERIOD MAX.	1.00
V1	DATE(s) OF MAX. PD.	25 th & 26 th
W	# DAYS > = 0.01"	8
X	# DAYS > = 1.00"	0
Y	YR. TO DATE TOT.	3.01
	MAX. 1 HR. PRECIP.	0.32

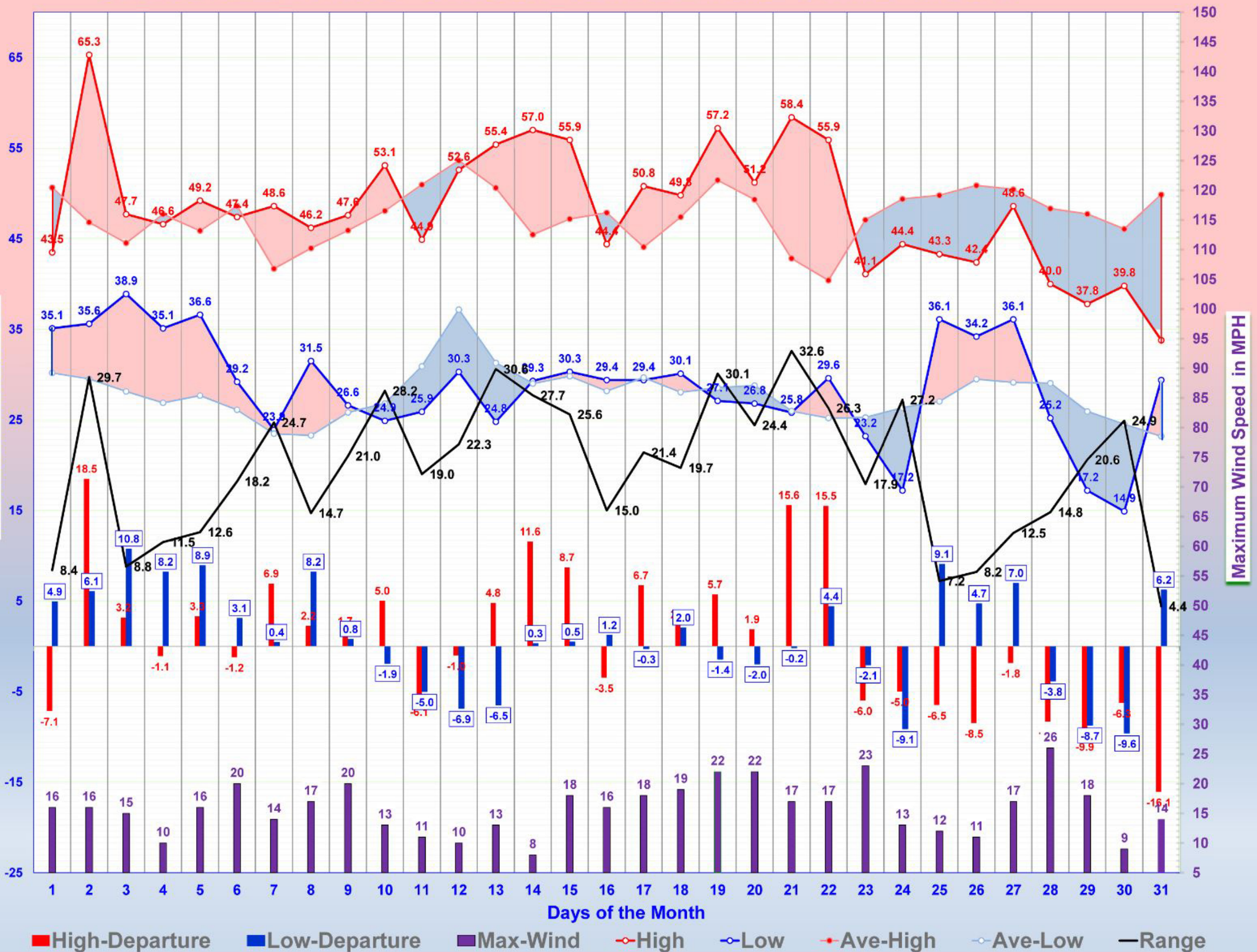
SNOWFALL INCHES

Z	DAILY MAXIMUM	4.2
1	DATE OF MAX.	Jan-31
2	DAYS= > TRACE	3
3	DAYS > = 1.0"	1
4	MONTHLY TOTAL	4.6
5	2020-21 SEASON'S TOTAL	4.8

BAROMETER

6	MAXIMUM	30.48
6A	DATE	Jan-01
7	MINIMUM	29.54
7A	DATE	Jan-16
8	AVE. MONTHLY PRESSURE	30.06
CWA	NWS COUNTY WARNING AREA	Henrico

SPRINGFIELD PARK'S JANUARY TEMPERATURE & WIND GRAPH



The Richmond International Airport JANUARY TEMPERATURE GRAPH

