

20 21 22 23 24 25 26 27 28 29 30 31 32 33 34 35 36 37 38

Jun 2022	2nd PERIOD		WIND			REL. HUMIDITY		BAROMETRIC PRESSURE				GLAZE SLEET SNOW			FOG DEW FROST			
	START	END	RUN	MAX.	TIME	MAX.	MIN.	MAX.	MIN.	AVE.	CHANGE							
Jun-01			27.6	12	15:34	96	41	30.00	29.84	29.92	0.13						4	
Jun-02			49.8	24	17:45	94	45	29.84	29.68	29.76	-0.16					1	3	
Jun-03			63.2	17	8:56	97	37	29.91	29.74	29.83	0.07						P	
Jun-04			43.7	14	15:06	96	31	29.95	29.89	29.92	0.10						4	
Jun-05			68.3	14	11:44	93	45	30.02	29.90	29.96	0.04						4	
Jun-06			50.8	14	15:42	95	29	30.09	29.99	30.04	0.08						4	
Jun-07			111.7	21	14:54	93	54	30.06	29.90	29.98	-0.06						3	
Jun-08	2300	2315	52.5	13	16:45	96	46	29.95	29.77	29.86	-0.12					2	1	
Jun-09			74.6	17	14:21	98	42	29.90	29.69	29.80	-0.06						P	
Jun-10			39.9	11	14:24	92	37	29.97	29.88	29.93	0.13						4	
Jun-11	1100	1210	41.4	21	15:24	88	54	29.98	29.89	29.94	0.01					1	1	
Jun-12	0740	0840	39.7	17	11:00	98	71	29.99	29.90	29.95	0.01					5	P	
Jun-13			36.5	10	17:00	97	56	29.98	29.90	29.94	-0.01						4	
Jun-14	1155	1310	29.2	16	12:19	96	63	29.99	29.85	29.92	-0.02						3	
Jun-15			35.4	14	23:31	99	50	30.11	29.99	30.05	0.13						5	
Jun-16			104.4	17	19:57	95	62	30.16	29.95	30.06	0.01					3	N	
Jun-17			71.7	20	13:42	97	50	29.99	29.73	29.86	-0.20						P	
Jun-18			74.0	23	16:48	94	38	30.00	29.77	29.89	0.02						4	
Jun-19			64.4	18	10:34	87	31	30.15	30.00	30.08	0.19					3	3	
Jun-20			23.4	10	15:36	90	35	30.26	30.15	30.21	0.13						4	
Jun-21			37.3	11	14:06	86	39	30.22	30.06	30.14	-0.06						N	
Jun-22	1800	1950	44.0	29	15:19	97	49	30.07	29.84	29.96	-0.19						2	
Jun-23	0905	1000	30.8	12	15:10	98	86	30.00	29.83	29.92	-0.04						P	
Jun-24			23.2	9	14:23	99	59	30.11	30.00	30.06	0.14						P	
Jun-25			52.6	12	21:25	98	51	30.19	30.08	30.14	0.08						3	
Jun-26			79.5	17	14:51	91	51	30.16	30.02	30.09	-0.04						1	
Jun-27			64.4	17	8:26	98	70	30.08	29.96	30.02	-0.07					1	N	
Jun-28			49.1	15	11:06	98	42	30.24	30.08	30.16	0.14						5	
Jun-29			79.0	16	17:35	90	46	30.28	30.17	30.23	0.07						4	
Jun-30			36.4	31	17:00	97	46	30.25	30.13	30.19	-0.04						P	

TOTAL NUMBER	Column 23		1598.5	492		2843	1456	901.90	897.58	899.74	DAYS	0	0	0	0	7	20	0
	Mar. Wind Run		30	30	30	30	30	30	30	30	30	Normal	0.0	0.0	0.0	1.8	6.2	17.8
AVERAGE	Total	1598.5	53.28	16.40	15:00	94.8	48.5	30.06	29.92	29.99	Depart.	0.0	0.0	0.0	-1.8	0.8	2.2	0.0
NORMALS	Miles	1546.7	53.0	17.8		93.5	50.5	30.03	29.89	29.96	Rating ▶	0	0	0	0	16	66	0
DEPARTURES	Miles	51.8	0.2	-1.4		1.3	-1.9	0.03	0.03	0.03	Intensity	GLAZE	SLEET	SNOW	FOG		Dew	Frost
MAXIMUM DATES	Dates	111.7	31	South	99	86	30.28	30.17	30.23	0.19	GLAZE	SLEET	SNOW	FOG		Dew	Frost	
	1	Jun-07	Jun-30	17:00	Jun-15	Jun-23	Jun-29	Jun-29	Jun-29	Jun-19								
	2																	
	3																	
4	4			Ave. Max.														
Min. Temps. >= 70°F	Dates	23.2	9	32.9	86	29	29.84	29.68	29.76	-0.20	5. Very Heavy 4. Heavy-Unusual 3. Moderate - Ave. 2. Light - >= Ave. 1. Very Light - Slight - Trace M - Event with intensity missing							
2022	4			Dep.	Jun-21	Jun-06	Jun-02	Jun-02	Jun-02	Jun-17								
Ave.	8.9			-1.9														
Departure	-4.9																	
Days Min. <=32 °F	0	≤ 75	≤ 70	≤ 65	≤ 60	≤ 55	≤ 50	≤ 45	≤ 40	≤ 35								
Days Min >=70°F	4	30	25	16	8	3	0	0	0	0								

Jun
2022

REMARKS FOR THE MONTH

June - 2022

Jun-01	AM WAS EST. TO BE 35% CLEAR, CLOUDS BETWEEN 0815-0940-PM EST. 55% CLOUDY HAD A THIN CIRROSTRATUS VEIL WITH CUMULUS AND TOTALLY CLOUDY AFTER 1815
Jun-02	TS rated 1-3-1-A VERY CLEAR AM WITH FIRST CUMULUS SEEN AT 1215 THEN PC TO 1530 THEN CLOUDY-2 TS PASSED OUR STATION, ONE TO SOUTH AND ONE TO NORTH
Jun-03	TODAY WAS CLOUDY AND COOL AND BREEZY WITH A FEW PDS OF SUN
Jun-04	VERY CLEAR AM WITH FIRST CUMULUS AT 1205 & ONLY SCATTERED CUMULUS UNTIL 1720 THIN CIRRUS TO NORTH COMING IN AT 1730 INCREASING TO 2040-PM EST. 20-25% CLO.
Jun-05	VERY CLEAR TO 1440 THEN CIRRUS AND CUMULUS CAME IN BY 1800 & CIRRUS BECAME THICKER
Jun-06	A BEAUTIFUL SPRING DAY WITH ONLY A FEW CIRRUS CLOUDS UNTIL 1750 WITH VERY LOW RH OF 29% AT 1137
Jun-07	A MOSTLY CLOUDY BREEZY DAY WITH AN INCREASE IN RH-MIN. RH 54%
Jun-08	TS rated 2-1-2-TS BET. 2030-2115-A CLEAR AM WITH CUMULUS STARTING TO COME IN AT 1145 & PC BY 1315 & CLOUDY BY 1600 WITH TS AROUND 2050
Jun-09	CLOUDY TO 0830 THEN AVERAGED PC TO 1800 THEN A CLEAR SKY & A BREEZY PM
Jun-10	A CLEAR AM WITH CUMULUS STARTING TO COME IN AT 1130 & INCREASED TO PC THEN MOSTLY CLOUDY AFTER 1350
Jun-11	TS rated 1-3-1-ONE THUNDER HEARD AT 1501 AS TS PASSED TO OUR SOUTH GIVING A WIND GUST TO 21 MPH
Jun-12	TS rated 5-2-4- STRONG ELECTRICAL TS CAUSED POWER OUTAGE FROM AROUND 1050-2335-3RD PD. OF PRECIP. 0950-1130
Jun-13	AM HAD CLOUDS UNTIL 0915 THEN DECREASED AND PM WAS ABOUT 40% CLOUDY
Jun-14	TODAY WAS HUMID AND CLOUDY WITH WHAT LOOKED TO BE LIKE DERECHO TS THAT HIT CHICAGO AREA LAST NIGHT WITH 80 MPH WINDS CAUSING DAMAGE. REMNANTS OF
Jun-15	A VERY HEAVY DEW-VERY CLEAR UNTIL 1015 THEN CIRRUS STARTED COMING IN AT 1415-PM SKY AVERAGED PC
Jun-16	TS rated 3-2-2-SEVERE TS PASSED TO OUR WEST BUT WAS ONLY AN AVERAGE TS AT SPRINGFIELD PARK
Jun-17	CLEAR SKY BY 0830 UNTIL 1250 THEN PC TO 1550 FOLLOWED BY CLOUDY-TS PASSED TO WEST AND EAST OF SPRINGFIELD PARK
Jun-18	BREEZY, COOL AND MOSTLY CLEAR ALL DAY EXCEPT A FEW FAIR WEATHER CUMULUS
Jun-19	TS rated 3-3-2-3RD PD. OF PRECIP. 2135-2400-MAX. WIND GUST 29 MPH IN TS AT 1519-VERY STRONG TS IN FAUQUIER AND LOUDOUN CO, VA
Jun-20	3RD PD. OF PRECIP. 1120-1500 BUT NO THUNDER-A COOL DAY FOR JUNE 20TH
Jun-21	WIND SHIFTING SW WITH A 5.4 degrees F TEMP. INCREASE ON THE MAX. TEMP.
Jun-22	A NEW REC. HIGH DAILY TEMP. RANGE FOR DATE OF 29.6 degrees F -PREVIOUS REC. WAS 25 degrees F IN 2010
Jun-23	DAILY TEMP. RANGE WAS ONLY 6.3 degrees F -PREVIOUS REC. WAS 10 degrees F IN 2011-MAX. TEMP. WAS ONLY 72 degrees F COOLEST OF JUNE
Jun-24	LARGE WARMUP OF 10.4 degrees F FROM YESTERDAY WITH A MAX. TEMP. OF 84.2 degrees F TODAY
Jun-25	AM SKY MOSTLY CLEAR UNTIL 1115 THEN CUMULUS CAME IN AND INCREASED AND BECAME PC BY 1245-PM AVERAGED PC
Jun-26	AM SKY WAS CLEAR UNTIL 1430 THEN CUMULUS STARTED COMING IN AND INCREASED TO PC BY 1515 AND CLOUDY BY 1745
Jun-27	TS rated 1-1-3 ONLY TWO DISTANT THUNDERS HEARD AT 1336 & 1532 WITH NO STORM HERE
Jun-28	TODAY'S MAX. TEMP. WAS 5.1 degrees F COOLER WITH A LOW RH OF 42%
Jun-29	CLEAR UNTIL 1215 THEN CUMULUS STARTED COMING IN AND BECAME PC BY 1530 & PM AVERAGED PC
Jun-30	A CLEAR AM WITH INCREASING TEMP. AND INCREASING CLOUDS- THE PM AVERAGED CLOUDY-RAIN WITH NO THUNDER FROM 1655 TO 1730

DATE

EXTENSION OF LENGTHY DAILY REMARKS

Jun-14 THESE STORMS LUCKILY TO OUR WEST THAT HAD MUCH LIGHTNING AND WERE MOVING AT ABOUT 50 MPH.

ALL DEW POINTS THIS MONTH AND THE SUMMER ARE REDUCED BY 2 DEGREES F AS THE DAVIS INSTRUMENT OVERRATES DEW POINTS.

The daily records for the month are listed on page # 4 and not found in the remarks.

The link below explains how observations are taken at the Glen Allen Weather Station - Note the Numbers match the column numbers on the Observation Sheet

[Rules for making Observations in 2022](#)

June 2022

Springfield Park, Glen Allen, VA

The 3.70 inches of rain had a departure of -1.15 inches and June was the 5th driest June on record based on a 13-year average with 10 days of measurable precipitation.

The mean temperature for June was 74.8 F with a -1.3 F departure and was the 2nd coolest June on record in the past 13 years. The highest temperature for the month was 95.0 on the 17th and there were 9 days of equal to 90 F or greater which was a -0.7day departure. There were only 4 days the minimum temperature was equal to or greater than 70°F and the average is 8.9 days. The average min. temp. of 63.3 F was the 2nd lowest on record for June and the highest min. for June was 71.9 F on the 14th which set a new low record for June. The maximum average temperature for June was 86.3 F a 0.1°F departure. Springfield Park had 14 new daily records for the 13 years of records mainly for low minimum temps. and for high & low temperature range records. The highest daily temperature range in June was 30.2 F on June 6th which is a new maximum record for the date. The minimum daily temp. range for June was only 6.3 F on June 23rd which was a new record low for the date. The daily ave. temp. range for June was 22.9 F which was the 2nd highest on record for June. The hottest day with the highest daily mean was 82.9 F on the 17th which was the 3rd highest on record for June and had the 2nd highest dew point temp. for June.

June's highest wind gust was 31 mph on the 30th. Springfield Park had 1 strong electrical thunderstorm on the 12th that took out the power for about 12 hours and 6 weak thunderstorms. The highest barometric pressure was 30.28 inches of mercury on the 29th, and the lowest pressure for June was only 29.68 inches of mercury on the 2nd which was the 3rd highest in the past 13 years. Cloud cover for the month was very near the average.

Richmond International Airport

The Richmond International Airport had 6.58 inches of precipitation for June which was a 1.94-inch departure, making it the 11th wettest June on record since 1887. There were only 7 days with measurable precip. but 4 days with more than one inch of rain on the 12th, 22nd, 27th, 30th. The 22nd had 2.03 inches, most rain in a day, but the record for the 22nd is 7.61 inches recorded in 2018. The Airport had 2.88 inches more than Springfield Park in West Henrico. It is interesting that the much above ave. precip. occurred in only 7 days. Only 13 years since 1887 have had less days with measurable precip. in June.

The Airport's mean temperature for June of 75.5 F was a 0.5 F departure from ave. and the 37th warmest June since 1897. The Airport's maximum temperature average for June was 86.6 F, a 1.0 F departure. The Airport's highest maximum temperature for June was 97 F on the 17th and the lowest maximum temperature for June was 72 F on the rainy day of the 23rd. The Airport had 8 days that the maximum temperature was 90 F or higher. The min. temp. average for June was 64.3 F, a -0.2 F departure. The Airport had 7 days the minimum temperature was greater than or equal to 70 F for the month. The daily high mean temperature (hottest day) for June was 84.0 F on the 17th. The daily lowest mean temperature (coolest day) for June was 69 F on the 6th, 19th and 20th and only 3 years have been higher with the record being the hot June 2010 with 71.0 F.

The max temperature range for June was 31 F on the 22nd and the lowest was 5 F on the 23rd; only 16 years had a lower daily temp. range. The average daily temperature range was 22.3 F, a 1.0 F departure.

The Airport had two daily records in June.

June 2nd 82.5 F tied the record set in 1989 for highest daily mean temp. for the date.

June 23rd 5 F low temp range was the lowest on record for the date; the previous record was 6 F set in 1936.

ACON - VA/NC/SC

The Atlantic Coast Observer Network: Virginia, North Carolina, South Carolina

June 2022

Station summary of Climatological Data

Observer: Lowell L. Koontz Acon Station ID: West Henrico - Glen Allen, VA .

Observation Times: Temps Recorded 2400 Precipitation Recorded 2400

TEMPERATURE °F

A	MEAN MAXIMUM	86.25
B	MEAN MINIMUM	63.33
C	MEAN MONTHLY	74.79
C1	MEAN TEMP DEP.	-1.29
D	MAXIMUM	95
E	DATE(s) OF MAX.	Jun-17
F	MINIMUM	51.3
G	DATE(s) OF MIN.	Jun-19
H	# DAYS MAX. >= 90°	9
I	# MIN. >= 70 °F	4
J	MIN. <= 32°	0
K	MIN. <= 0°	0
K1	AVE RELATIVE HUMIDITY	71.7

PRECIPITATION INCHES

T	MONTH TOTAL	3.70
U	CALENDAR DAY MAX.	1.27
U1	DATE OF MAX.	Jun-12
V	24-HR. PERIOD MAX.	1.28
V1	DATE(s) OF MAX. PD.	Jun 11 th & 12 th
W	# DAYS >= 0.01"	10
X	# DAYS >= 1.00"	1
Y	YR. TO DATE TOT.	22.16
	MAX. 1 HR. PRECIP.	0.89
	MAX. 5 MIN PRECIP.	0.29

SNOWFALL INCHES

Z	DAILY MAXIMUM	0
1	DATE OF MAX.	
2	DAYS= > TRACE	0
3	DAYS >= 1.0"	0
4	MONTHLY TOTAL	0.00
5	2021-2022	10.1

BAROMETER

6	MAXIMUM	30.28
6A	DATE	Jun-29
7	MINIMUM	29.68
7A	DATE	Jun-02
8	AVE. MONTHLY PRESSURE	29.99
CWA	NWS COUNTY WARNING AREA	Henrico

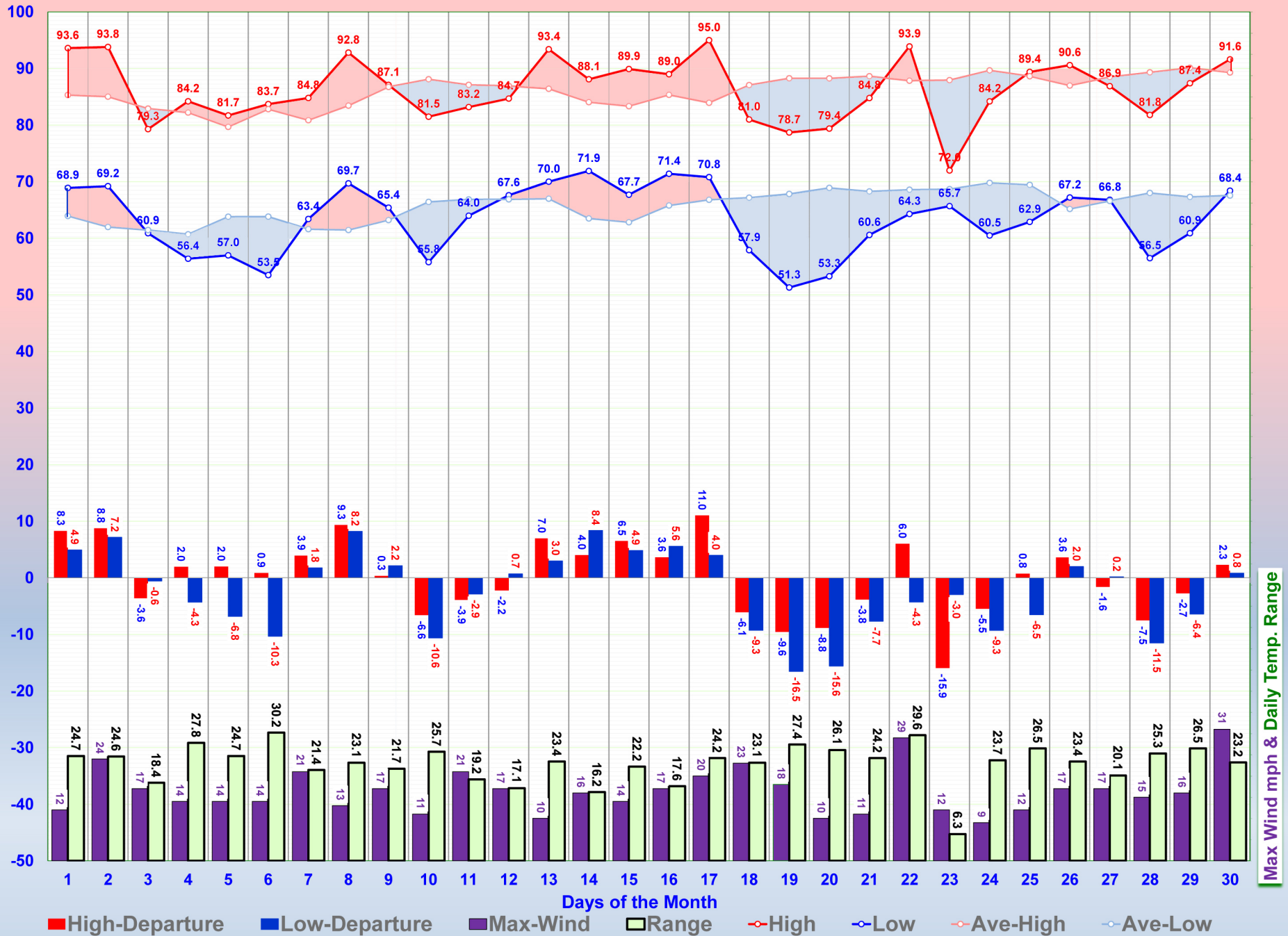
WIND MPH

L	MAX. GUST	31
M	DIRECT. OF GUST	South
N	DATE	Jun-30
	TIME	17:00

NUMBER DAYS WITH -

O	THUNDER	7
P	HAIL	0
Q	GLAZE	0
R	ICE PELLETS (SLEET)	0
R1	DENSE FOG <= 1/4 MILE	0

SPRINGFIELD PARK'S JUNE TEMPERATURE & WIND GRAPH



The Richmond International Airport JUNE TEMPERATURE GRAPH

