

PAGE #1		March 2022		West Henrico Co. - Glen Allen Weather Center 37.65537° N. 77.56929° W. - Koontz																
		1	2	3	4	5	6	7	8	9	10	11	12	13	14	15	16	17	18	19
March 2022	Week Day	TEMPERATURE °F				TEMPERATURE °F				SKY		PRECIPITATION			FROZ. PRECIP.		1st PERIOD			
		MAX.	Time	MIN.	Time	RANGE	MEAN	CHANGE	SOIL	AM	PM	Liquid	1 Hr.	5 Min.	NEW	GROUND	START	END		
Mar-01	Tue	63.5	15:39	27.7	6:51	35.8	45.6	3.4	46	2	1									
Mar-02	Wed	68.7	14:46	41.2	6:50	27.5	55.0	9.4	46	0	0									
Mar-03	Thu	65.0	8:57	40.2	23:59	24.8	52.6	-2.4	48	1	2									
Mar-04	Fri	51.4	14:23	29.6	6:59	21.8	40.5	-12.1	48	0	0									
Mar-05	Sat	66.3	14:43	35.7	5:30	30.6	51.0	10.5	47	1	0									
Mar-06	Sun	78.3	15:04	59.0	0:01	19.3	68.7	17.7	49	2	2									
Mar-07	Mon	81.3	14:43	59.8	23:56	21.5	70.6	1.9	51	2	2	0.13	0.12	0.04				1855	2200	
Mar-08	Tue	60.1	0:01	42.9	23:59	17.2	51.5	-19.1	53	0	1	0.13	0.08	0.01				2305	2400	
Mar-09	Wed	46.4	15:42	39.6	23:58	6.8	43.0	-8.5	52	2	2	0.90	0.28	0.04				0001	0630	
Mar-10	Thu	51.9	13:23	35.8	23:54	16.1	43.9	0.8	50	2	2									
Mar-11	Fri	63.9	14:31	31.9	6:02	32.0	47.9	4.1	49	0	1	T	T	T				2233	2240	
Mar-12	Sat	51.4	6:06	20.5	23:12	30.9	36.0	-12.0	49	2	2	1.14	0.62	0.14	1.9	1.1		0010	1025	
Mar-13	Sun	45.1	16:00	15.8	7:20	29.3	30.5	-5.5	47	0	0					None				
Mar-14	Mon	62.7	14:25	27.8	7:09	34.9	45.3	14.8	46	0	1									
Mar-15	Tue	72.9	15:28	39.1	7:42	33.8	56.0	10.8	47	0	1									
Mar-16	Wed	72.1	15:22	42.2	7:28	29.9	57.2	1.2	48	2	1	0.05	0.05	0.01				2100	2155	
Mar-17	Thu	58.4	18:42	50.2	23:48	8.2	54.3	-2.9	50	2	2	1.34	0.81	0.09				0001	0155	
Mar-18	Fri	76.5	14:17	45.6	5:25	30.9	61.1	6.8	51	0	2									
Mar-19	Sat	78.4	17:37	57.7	6:20	20.7	68.1	7.0	52	2	1									
Mar-20	Sun	67.6	13:06	42.7	23:59	24.9	55.2	-12.9	54	0	2									
Mar-21	Mon	70.7	15:36	33.6	7:13	37.1	52.2	-3.0	54	0	0									
Mar-22	Tue	76.5	15:02	44.9	6:04	31.6	60.7	8.6	54	1	1									
Mar-23	Wed	67.0	23:10	46.7	7:09	20.3	56.9	-3.9	55	2	2	0.66	0.42	0.05				1110	1155	
Mar-24	Thu	72.2	12:46	56.0	23:38	16.2	64.1	7.2	55	2	2	0.30	0.28	0.08				1900	2310	
Mar-25	Fri	67.0	13:13	46.5	23:50	20.5	56.8	-7.3	56	2	1									
Mar-26	Sat	56.9	14:10	36.9	23:59	20.0	46.9	-9.9	56	1	2	T	T	T				1730	1735	
Mar-27	Sun	53.2	14:45	30.0	6:58	23.2	41.6	-5.3	54	0	1									
Mar-28	Mon	52.8	15:19	23.8	6:58	29.0	38.3	-3.3	53	0	0									
Mar-29	Tue	48.8	16:47	21.4	6:04	27.4	35.1	-3.2	52	1	0									
Mar-30	Wed	62.0	14:10	39.2	7:09	22.8	50.6	15.5	51	2	2	T	T	T				0325	0340	
Mar-31	Thu	71.4	11:47	58.3	0:01	13.1	64.9	14.3	52	2	2	0.68	0.61	0.12				1145	1555	
TOTAL NUMBER		1980		1222		758.1	1601.4	22.7	1575	33	38	5.33	3.27	0.58	1.9	1.1		Col. 26 - 27		
AVERAGE		63.88	14:10	39.43	12:22	24.45	51.66		50.81	1.06	1.23	Ave Tot. 9	Ave. Max. 9	Ave. Max. 9	Ave. Tot. 1	Ave. Days 1		65.4	Percent	
NORMALS		59.85		37.91		21.95	48.88		48.54	1.17	1.16	3.53	0.39	0.08	2.7	1.6		64.2	Percent	
DEPARTURES		4.03		1.52		2.51	2.8		2.27	-0.10	0.07	1.8	0.42	0.06	-0.8	-0.6		1.3	Percent	
Max. Temps. >= 70°F		81.3	Ave.High Max	59.8	Ave.HighMin	37.1	70.6	17.7	56	Whole Day		1.34	0.81	0.14	1.9	1.1	Precip	24 Hr.		
March 10		Mar-07	81.0	Mar-07	58.0	Mar-21	Mar-07	Mar-06	Mar-25	AVE. 1.15		Mar-17	Mar-17	Mar-12	Mar-12	Mar-12	Precip	1.39		
Ave. 7.4			Dep. 0.3		Dep. 1.8				Mar-26	Normal 1.16							Amount	Mar-16		
Departure 2.6										Depart. -0.02							Date	Mar-17		
Min. Temps. <= 32°F		45.1	Ave.LowMax	15.8	Ave.LowMin	6.8	30.5	-19.1	46	SKY		AM	PM	>= 0.10	INCHES	>= 1.00	INCHES	>= 2.00	INCHES	
March 9		Mar-13	38.4	Mar-13	19.5	Mar-09	Mar-13	Mar-08	Mar-01	CLEAR	12	7	8	DAYS	2	DAYS	0	DAYS		
Ave. 10.8			Dep. 6.7		Dep. -3.7				Mar-02	P.CLO.	5	10	HOTTEST	70.6	Highest	Lowest	COOLEST	30.45		
Departure -1.8									Mar-14	CLO.	14	14	DAY	3-07	Mean	Mean	DAY	3-13		
Days Max. <=32 °F		0		MAX. DAYS	>=85	>=80	>=75	>=70	>=65	>=60	>=55	>=50	>=45	>=40	>=35	>=30	>=25	>=20		
Days Max. >=90°F		0			0	1	5	10	16	21	23	28	31	31	31	31	31	31		

20 21 22 23 24 25 26 27 28 29 30 31 32 33 34 35 36 37 38

March 2022	2nd PERIOD		WIND			REL. HUMIDITY		BAROMETRIC PRESSURE										
	START	END	RUN	MAX.	TIME	MAX.	MIN.	MAX.	MIN.	AVE.	CHANGE	GLAZE	SLEET	SNOW	FOG	DEW	FROST	
Mar-01			78.3	19	14:23	94	31	30.25	29.99	30.12	-0.07						2	
Mar-02			68.4	12	9:18	74	33	30.06	29.95	30.01	-0.11					N		
Mar-03			110.3	23	22:21	77	27	30.38	29.90	30.14	0.14					N		
Mar-04			74.0	16	0:01	67	32	30.59	30.38	30.49	0.34					N		
Mar-05			100.7	22	15:21	87	47	30.49	30.25	30.37	-0.12					N		
Mar-06			183.5	31	10:55	87	54	30.26	30.08	30.17	-0.20					N		
Mar-07			209.5	50	19:34	93	49	30.11	29.74	29.93	-0.25					N		
Mar-08			89.5	17	5:13	81	40	30.20	29.87	30.04	0.11					P		
Mar-09	0705	1015	50.5	14	6:06	98	88	30.18	29.83	30.01	-0.03					P		
Mar-10			66.5	16	9:59	96	62	30.23	30.09	30.16	0.16					P		
Mar-11	2250	2255	72.3	24	19:32	99	52	30.15	29.74	29.95	-0.22					1	3	
Mar-12	1200	1600	136.2	28	8:44	98	52	30.16	29.37	29.77	-0.18		1	2	3	P		
Mar-13			110.5	23	17:39	86	35	30.41	30.16	30.29	0.52						P	
Mar-14			68.9	18	16:03	83	30	30.50	30.33	30.42	0.13						1	
Mar-15			100.3	17	13:06	75	26	30.40	30.17	30.29	-0.13					1		
Mar-16	2325	2400	85.8	18	12:18	90	37	30.22	30.06	30.14	-0.15					2		
Mar-17	0325	0355	63.2	14	9:54	98	90	30.06	29.85	29.96	-0.19					P		
Mar-18			76.5	16	18:11	100	48	30.10	29.86	29.98	0.03				2	p		
Mar-19			171.0	35	16:25	87	46	29.91	29.70	29.81	-0.18					1		
Mar-20			95.0	25	19:18	74	38	30.15	29.77	29.96	0.16					2		
Mar-21			62.3	14	14:44	92	31	30.32	30.13	30.23	0.27					3		
Mar-22			67.2	15	17:38	73	26	30.18	30.08	30.13	-0.10					2		
Mar-23	1250	2030	101.6	23	23:19	98	66	30.12	29.83	29.98	-0.15					2		
Mar-24			93.6	21	1:46	96	76	29.86	29.68	29.77	-0.21					p		
Mar-25			68.1	21	13:19	99	37	29.79	29.64	29.72	-0.05					p		
Mar-26			107.3	31	16:00	80	32	29.80	29.60	29.70	-0.01					2		
Mar-27			94.6	20	19:26	81	32	30.01	29.77	29.89	0.19						2	
Mar-28			104.4	29	17:01	84	18	30.21	29.92	30.07	0.18						2	
Mar-29			63.7	15	16:16	63	24	30.36	30.20	30.28	0.22						N	
Mar-30	0435	0520	84.5	17	12:55	83	33	30.25	29.91	30.08	-0.20					p		
Mar-31			209.8	34	12:41	95	76	29.92	29.48	29.70	-0.38					N		
TOTAL NUMBER	Column 23		3068.0	678		2688	1368	935.63	927.33	931.48	DAYS	0	1	1	1	1	9	5
	Mar. Wind Run		31	31	31	31	31	31	31	31	31	Normal	0.8	1.5	2.2	3.0	1.5	6.2
AVERAGE	Total	3068.0	99.0	21.9	13:51	86.7	44.1	30.18	29.91	30.05	Depart.	-0.8	-0.5	-1.2	-2.0	-0.5	2.8	-1.7
NORMALS	Miles	2345.1	78.4	20.7		85.8	42.3	30.20	29.95	30.08	Rating ▶	0	1	2	2	3	16	10
Departures	Miles	722.9	20.6	1.2		1.0	1.8	-0.02	-0.04	-0.03	Intensity	GLAZE	SLEET	SNOW	FOG		Dew	Frost
MAXIMUM DATES			209.8	50	SSW	100	90	30.59	30.38	30.49	0.52	5. Very Heavy 4. Heavy-Unusual 3. Moderate - Ave. 2. Light - >= Ave. 1. Very Light - Slight - Trace M - Event with intensity missing	N- None No Dew Obs. P- Precip. prevent obs.					
1			Mar-31	Mar-07	19:34	Mar-18	Mar-17	Mar-04	Mar-04	Mar-04	Mar-13							
2																		
3																		
4																		
Min. Temps. >= 70°F			Dates		Ave. Max.													
March 0			Dates		38.8	63	18	29.79	29.37	29.70	-0.38							
Ave. 0.1			Dates		Dep.	Mar-29	Mar-28	Mar-25	Mar-12	Mar-26	Mar-31							
Departure -0.1			Dates		11.2													
Days Min. <=32 °F		9	MIN. DAYS	≤70	≤65	≤60	≤55	≤50	≤45	≤40	≤35	≤30	≤25	≤20	≤15	≤10	≤05	
Days Min >=70°F		0		31	31	31	26	26	22	17	10	8	4	1	0	0	0	

**March
2022**

REMARKS FOR THE MONTH

March - 2022

Mar-01	CLOUDS CAME IN AT 0850 AND DIDN'T CLEAR UNTIL 1440
Mar-02	NO CLOUDS TO 0800 THEN SCATTERED CIRRUS BECAME CIRROSTRATUS AT 1135 AND CLOUDY TO 1245 THEN PC TO 1300 FOLLOWED BY CLEAR TO 1620 THEN
Mar-03	COLD FRONT PASSED AROUND 0900-AM WAS PC AND PM AVERAGED CLOUDY
Mar-04	AM REL. HUMIDITY WAS 55% AT 0650-CLEAR ALL DAY EXCEPT A FEW CIRRUS UNTIL 1700 & THEN WAS CLOUDY 1730 TO DARK
Mar-05	AM HAD CIRROSTRATUS CLOUDS THAT BECAME CIRRUS-AFTER 1130 AND THROUGH PM IT WAS VERY CLEAR
Mar-06	CLOUDY AND VERY WARM AND WINDY DAY-MAX. WIND GUST 31 MPH AND WARMEST SINCE OCT. 25, 2021 WHEN IT WAS 79.4 degrees F
Mar-07	CLOUDY AND VERY WARM FOR MARCH - WARMEST SINCE OCT. 16, 2021 WHEN IT WAS 83.8 degrees F - COLD FRONT PASSED AT 0734 WITH WIND GUST TO 50 MPH-HEAVY
Mar-08	MOSTLY SUNNY WITH SCATTERED CIRRUS UNTIL 1500 THEN SUN THROUGH CIRRUS AND CIRROSTRATUS BY 1700
Mar-09	RAIN EARLY THEN DRIZZLE-CLOUDY, CHILLY, GLOOMY DAY-3RD PD. OF DRIZZLE BET. 1015-1400
Mar-10	AM WAS CLOUDY WITH STRATOCUMULUS COMING IN AT 1245 THEN CUMULUS BY 1530 FOLLOWED BY CLEARING AFTER 1700
Mar-11	BARELY FREEZING SOME DEW BUT MOSTLY FROST-DAY WAS VERY CLEAR TO 1430 THEN CIRRUS CAME IN AND INCREASED IN COVERAGE
Mar-12	A VERY CLOSE LIGHTNING STRIKE AT 0551 AND EMP BURNED OUT THE GROUND TEMP. SENSOR-ELEVATED SNOW BOARD READ 1.9 INS. AND SNOW BOARD ON GROUND
Mar-13	A VERY CLEAR DAY WITH A DEEP BLUE SKY BUT WINDY AND CHILLY-MAX. WIND GUST 23 MPH AT 1739
Mar-14	THIN CIRRUS STARTED COMING IN AT 1015 AND INCREASED DURING DAY BUT SOLAR ENERGY PASSED THROUGH THIN CLOUDS
Mar-15	A WARM BREEZY DAY WITH HIGH THIN CLOUDINESS
Mar-16	AM WAS CLOUDY AND PM WAS PC TO 1650 THEN CLOUDY INTO THE NIGHT WITH FIRST RAIN STARTING AT 2100
Mar-17	3RD PD. OF PRECIP. 0535-0615, 4TH PD. 0645-0955, 5TH PD. 1110-1550, RAIN MOST OF DAY TO 1550
Mar-18	BETWEEN THE FOG AND DEW AND RAIN EVERYTHING OUTSIDE WAS REALLY WET-A VERY CLEAR AM THEN THIN CIRRUS CAME IN AT 1300-CUMULUS CAME IN & BECAME PC
Mar-19	CLEAR UNTIL 0845 THEN CLOUDS STARTED COMING IN AND PM HAD CUMULUS AND SOME STRATOCUMULUS-PM EST. 65% CLOUDY
Mar-20	AM WAS VERY CLEAR UNTIL CUMULUS CLOUDS CAME IN AT 1145 AND WAS CLOUDY BY 1315 FOR REST OF DAY
Mar-21	FROST ON ROOFS - VERY CLEAR UNTIL 1045 THEN THIN CIRRUS CAME IN AND INCREASED TO 1330 THEN DECREASED AND BECAME VERY CLEAR BY 1630
Mar-22	VERY WARM FOR MARCH WITH LOW RH OF 26% AT 1452
Mar-23	AM MOSTLY DRY BUT PM WAS DAMP, DARK AND RAINY-HEAVIEST RAIN 1510-1525
Mar-24	CLOUDY AND WARM ALL DAY BUT NO RAIN UNTIL 1900
Mar-25	AM WAS CLOUDY UNTIL 1010 THEN BECAME MOSTLY CLEAR TO NOON AND PM AVERAGED ABOUT 60-70% CLOUDY
Mar-26	CLOUDS CAME IN AT 0800 & CLEAR 1000-1030 THEN CLOUDY TO 1730 & CLEARING BY 1900 - BLUSTERY WINDY DAY & MUCH VIRGA
Mar-27	LIGHT FROST BECAUSE OF BREEZY NIGHT-CLEAR TO 1050 WHEN CUMULUS CAME IN AND PM WAS EST. TO BE 65% CLOUDY WITH CUMULUS AND STRATOCUMULUS
Mar-28	MOSTLY CLEAR ALL DAY EXCEPT 1100-1215 WITH SCATTERED CUMULUS-WINDY AND CHILLY WITH A LOW RH OF 18% AT 1452
Mar-29	A DEW POINT OF 9 degrees F PREVENTED FROST-A COLD DAY FOR END OF MARCH-AM WAS PC WITH CIRRUS AND PM WAS CLEAR
Mar-30	A CLOUDY BUT MUCH WARMER DAY WITH A WARM FRONT PASSING IN AM GIVING SPRINKLES
Mar-31	A CLOUDY DAY WITH AN APPROACHING COLD FRONT- LOCAL TORNADO WARNING ISSUED WITH 2 FUNNEL CLOUDS REPORTED WITH ONE IN LAUREL- WIND RUN 209.8 MILES

DATE

EXTENSION OF LENGTHY DAILY REMARKS

Mar-02	PC TO DARK-AM 30% CLOUDY AND PM AVERAGED 25-30% CLOUDY
Mar-07	RAIN AT 0733 AND HIGHEST WIND SINCE FEB. 7, 2020
Mar-12	READ 1.7 INS.
Mar-18	AT 1400 AND THEN CLOUDY BY 1445 FOR REST OF DAY
Mar-26	SEEN AND 2 VERY LIGHT SPRINKLES-ONE BET. 1430-1445 AND 2ND 1730

The daily records for the month are listed on page # 4 and not found in the remarks.

The link below explains how observations are taken at the Glen Allen Weather Station - Note the Numbers match the column numbers on the Observation Sheet

[Rules for making Observations in 2022](#)

March
2022

March-2022

The Springfield Park Station had 17 Records or Record Ties in March

1

2

The minimum temperature on the 2nd was 41.2&deg;F, a new 13-year warm daily minimum temperature record for the date - the old record was 40.9&deg;F in 2018.

3

The maximum temperature on the 3rd was 65&deg;F, a new 13-year daily HIGH maximum temperature record for the date - the old record was 64.8&deg;F in 2020.

4

5

The maximum temperature on the 5th was 66.3&deg;F, a new 13-year daily HIGH maximum temperature record for the date - the old record was 66&deg;F in 2011.

6

The maximum temperature on the 6th was 78.3&deg;F, a new 13-year daily HIGH maximum temperature record for the date - the old record was 69&deg;F in 2009.

The minimum temperature on the 6th was 59&deg;F, a new 13-year warm daily minimum temperature record for the date - the old record was 42&deg;F in 2009.

7

The maximum temperature on the 7th was 81.3&deg;F, a new 13-year daily HIGH maximum temperature record for the date - the old record was 79&deg;F in 2009.

The minimum temperature on the 7th was 59.8&deg;F, a new 13-year warm daily minimum temperature record for the date - the old record was 54.2&deg;F in 2017.

8

The daily precipitation on the 8th was 0.13 inches, a new year HIGH daily precipitation record for the date - the old record was 0.06 inches in 2019.

9

The daily precipitation on the 9th was 0.90 inches, a new year HIGH daily precipitation record for the date - the old record was 0.36 inches in 2012.

10

11

12

The minimum temperature on the 12th was 20.5 13-year LOW daily minimum temperature record for the date - the old record was 26.9&deg;F in 2017.

The daily precipitation on the 12th was 1.14 inches, a new year HIGH daily precipitation record for the date - the old record was 0.63 inches in 2010.

13

The minimum temperature on the 13th was 15.8 13-year LOW daily minimum temperature record for the date - the old record was 24&deg;F in 2014.

14

15

The daily temperature range on the 15th was 33.8&deg;F, a new 13-year HIGH daily temperature range record for the date - the old record was 32.1&deg;F in 2018.

16

17

The daily precipitation on the 17th was 1.34 inches, a new year HIGH daily precipitation record for the date - the old record was 0.59 inches in 2013.

18

19

The minimum temperature on the 19th was 57.7&deg;F, a new 13-year warm daily minimum temperature record for the date - the old record was 56&deg;F in 2012.

20

21

The daily temperature range on the 21st was 37.1&deg;F, a new 13-year HIGH daily temperature range record for the date - the old record was 36&deg;F in 2014.

22

23

24

25

26

27

28

The minimum temperature on the 28th was 23.9 13-year HIGH daily minimum temperature record for the date - the old record was set in 2015.

29

30

31

March 2022 - Springfield Park, Glen Allen, VA

March was warmer than average and above average precipitation. The mean temperature for March was 51.7°F which was a departure of 2.8°F and 17 thirteen-year daily records were recorded for March. The 5.33 inches of precipitation for March was a 1.80-inch departure on the 13-year average and the 3rd wettest on record and 1.82 inches more than the Airport.

March had two cool periods (9th-14th) & 26th-30th) (See Graph). Springfield Park had 9 days that the minimum temperature was less than or equal to 32°F. The average is 10.8 days. The 81.3°F on the 7th was the warmest temp. for this month. The minimum temperature was 15.8°F on the 13th and was the 4th lowest on record for March and damaged some early spring plants. The maximum daily temp. range for March was 37.1°F on the 21st. The average ground temperature at one foot for the month was 50.8°F, a 2.3° departure.

The most precipitation in a one day was 1.34 inches on the 17th. The 0.81 inches of rain in one hour on the 17th set a new rainfall intensity record. There were only 9 days with measurable precipitation which was average for March. March was average in cloudiness, relative humidity, max. temp. range but the ave. daily temp. range of 24.5 was a new record for March.

The maximum wind gust during March was 50 mph which occurred on the 7th at 1934 hours from the SSW, which set a new 13-year record for March. The wind run for March was 3068 miles making this March the 2nd windiest in the past 13 years.

The highest barometer was 30.59 inches on the 4th which is near average for March. The lowest reading was only 29.48 inches on the 30th which was the lowest since 2018. There was 1 day with snow in March on the 12th when 1.9 inches was recorded the most since 2018 when 6.2 inches was recorded.

March 2022- Richmond International Airport

The average maximum temperature was 64.0°F which was 4.4°F higher than average. The average minimum was 40.7°F which was 3.5°F higher than average. The mean temperature for March was 52.4°F which was 4.0°F above the thirty-year mean temperature. This was the 14th warmest March on record since 1897. March had 11 days that the high temperature was greater than or equal to 70°F. The highest temp. was 81°F on the 7th and the lowest temperature of 19 was on the 13th. This March had 10 days that the minimum temperature was equal to or less than 32°F. The lowest maximum temp. for March was 46 degrees F on the 13th and only 4 Marches have had a higher reading. The record is 53 degrees F in 1953.

The total precipitation for March was 3.89 inches which is a departure of -0.49 inches tying for the 67th driest March since 1887. March had only 8 days with measurable precipitation and was 1.82 inches less than Springfield Park.

The Richmond International Airport had 1 daily record this March. The 61°F minimum temperature on the 24th was a new high min. record for the date in March; the previous record was 59°F in 2012. The highest daily temperature range for March was 35°F on the 1st and 21st and the average daily temp. range was 23.4degrees which was a 1.3°Fdeparture.

The Airport had 0.4 inches of snow for March which was a -0.7inch departure but the first measurable snow recorded in March since 2018 when 4.0 inches was reported.

ACON - VA/NC/SC

The Atlantic Coast Observer Network: Virginia, North Carolina, South Carolina

March 2022

Station summary of Climatological Data

Observer: Lowell L. Koontz Acon Station ID: West Henrico - Glen Allen, VA

Observation Times: Temps Recorded 2400 Precipitation Recorded 2400

TEMPERATURE °F

A	MEAN MAXIMUM	63.88
B	MEAN MINIMUM	39.43
C	MEAN MONTHLY	51.66
C1	MEAN TEMP DEP.	2.8
D	MAXIMUM	81.3
E	DATE(s) OF MAX.	Mar-07
F	MINIMUM	15.8
G	DATE(s) OF MIN.	Mar-13
H	# DAYS MAX. > = 90°	0
I	# MAX. < = 32°	0
J	MIN. < = 32°	9
K	MIN. < = 0°	0
K1	AVE RELATIVE HUMIDITY	65.4

WIND MPH

L	MAX. GUST	50
M	DIRECT. OF GUST	SSW
N	DATE	Mar-07
	TIME	19:34

NUMBER DAYS WITH -

O	THUNDER	1
P	HAIL	0
Q	GLAZE	0
R	ICE PELLETS (SLEET)	1
R1	DENSE FOG < = 1/4 MILE	0

PRECIPITATION INCHES

T	MONTH TOTAL	5.33
U	CALENDAR DAY MAX.	1.34
U1	DATE OF MAX.	Mar-17
V	24-HR. PERIOD MAX.	1.39
V1	DATE(s) OF MAX. PD.	16 th & 17 th
W	# DAYS > = 0.01"	9
X	# DAYS > = 1.00"	2
Y	YR. TO DATE TOT.	12.01
	MAX. 1 HR. PRECIP.	0.81
	MAX. 5 MIN PRECIP.	0.14

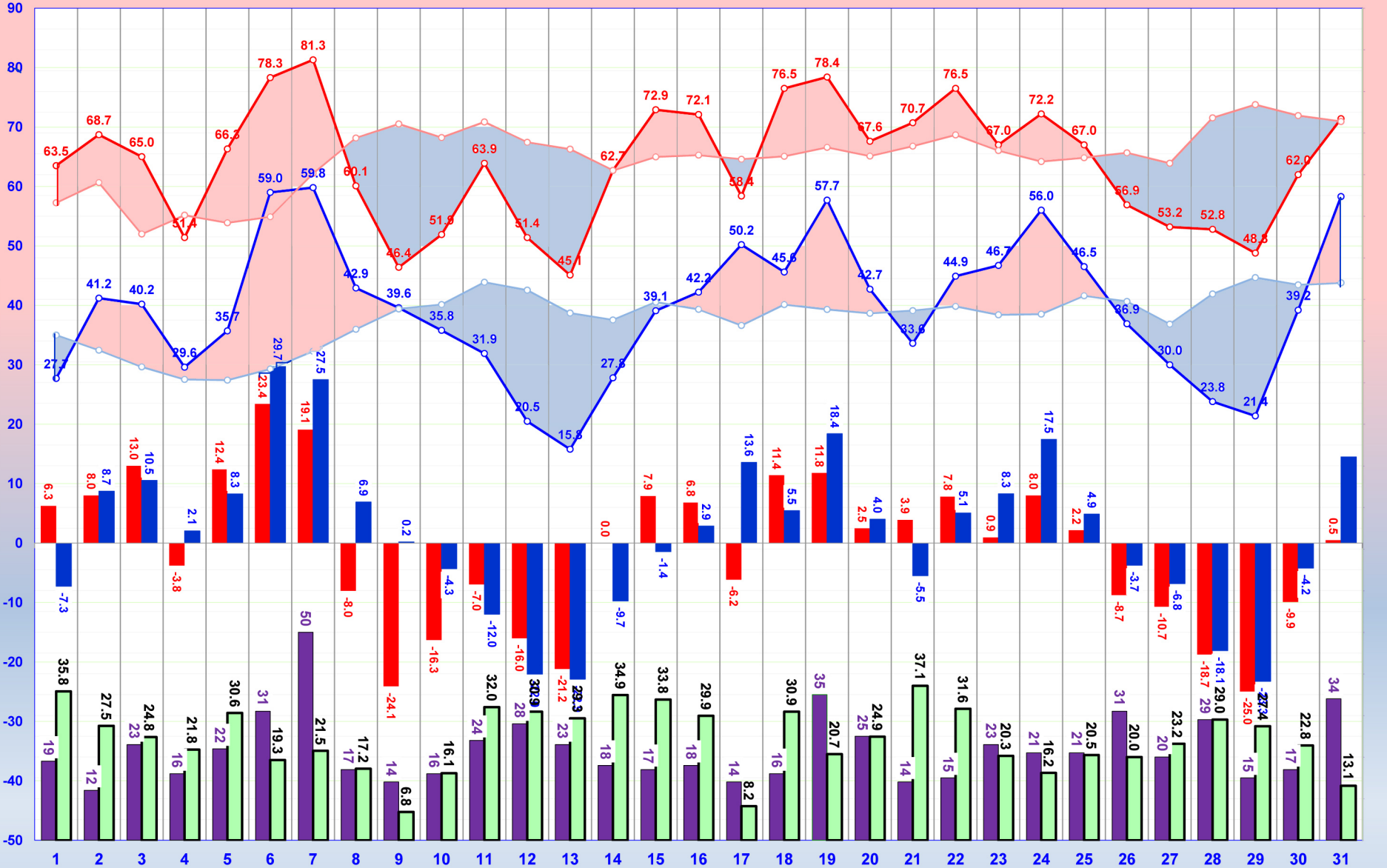
SNOWFALL INCHES

Z	DAILY MAXIMUM	1.9
1	DATE OF MAX.	Mar-12
2	DAYS= > TRACE	1
3	DAYS > = 1.0"	1
4	MONTHLY TOTAL	1.9
5	2021 - 2022 SEASON'S TOT.	10.1

BAROMETER

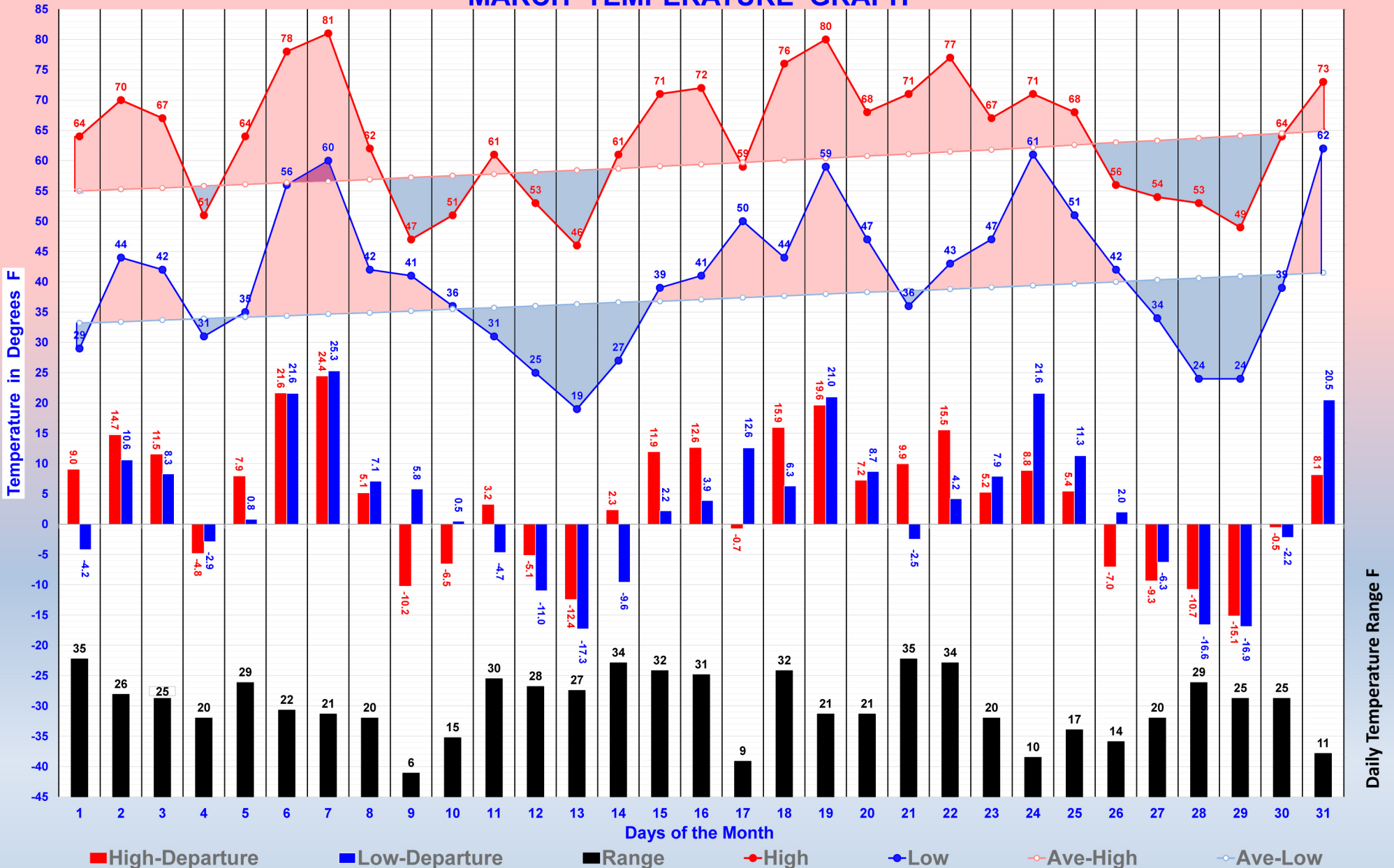
6	MAXIMUM	30.59
6A	DATE	Mar-04
7	MINIMUM	29.37
7A	DATE	Mar-12
8	AVE. MONTHLY PRESSURE	30.05
CWA	NWS COUNTY WARNING AREA	Henrico

SPRINGFIELD PARK'S MARCH TEMPERATURE & WIND GRAPH



Max. Wind mph & Daily Temp. Range

The Richmond International Airport MARCH TEMPERATURE GRAPH



STATION *(Climatological)*
Springfield Park

(River Station, if different)

MONTH
Mar 2022

WS FORM B-91
(03-09)

U.S. DEPARTMENT OF COMMERCE
NATIONAL OCEANIC AND ATMOSPHERIC ADMINISTRATION
NATIONAL WEATHER SERVICE

STATE
VA COUNTY
Henrico

RIVER

TIME (local) OF OBSERVATION RIVER TEMPERATURE MID PRECIPITATION MID STANDARD TIME IN USE

RECORD OF RIVER AND CLIMATOLOGICAL OBSERVATIONS

TYPE OF RIVER GAGE ELEVATION OF RIVER GAGE ZERO FLOOD STAGE NORMAL POOL STAGE

DATE	TEMPERATURE			PRECIPITATION													WEATHER (Observation Day)						RIVER STAGE		REMARKS <i>(SPECIAL OBSERVATIONS, ETC.)</i>						
	24 HRS ENDING AT OBSERVATION		AT OBSN	24 HR AMOUNTS			AT OB													Mark 'X' for all types occurring each day						Condition	Gage reading at ___ AM	Tendency			
	MAX	MIN		Rain, melted snow, etc. (in and hundredths)	Snow, ice pellets, hail (ins and tenths)	AT OB Snow, ice pellets, hail ice on ground (in)	A.M.			NOON				P.M.						Fog	Ice pellets	Glaze	Thunder	Hail					Damaging winds	Time of occurrence if different from above	
	Draw a straight line (-----) through hours precipitation was observed, and a wavy line (~~~~) through hours precipitation probably occurred unobserved																														
1	64	28	53	0.00	0.0	0																									The early AM was clear until 0850 when clouds ca
2	69	41	46	0.00	0.0	0																									No clouds until 0800 then scattered cirrus that
3	65	40	40	0.00	0.0	0																									A cold front passed around 0900 and the AM avera
4	51	30	40	0.00	0.0	0																									Today was clear all day except for a few cirrus
5	66	36	59	0.00	0.0	0																									The AM was cloudy and cloudiness decreased to ci
6	78	59	65	0.00	0.0	0																									Today was cloudy, very warm and very windy. The
7	81	60	60	0.13	0.0	0																									Cold front passed at 1934 giving one gust to 50
8	60	43	43	0.13	0.0	0																									Mostly clear with a few scattered cirrus until 1
9	46	40	40	0.90	0.0	0																									A cloudy, chilly, damp, gloomy day with rain end
10	52	36	36	0.00	0.0	0																									The AM was cloudy and stratocumulus clouds came
11	64	32	50	T	0.0	0																									The AM was very clear with a deep blue sky. The
12	51	21	21	1.14	1.9	1																									AM TS with about 12 thunders one lightning strik
13	45	16	40	0.00	0.0	T																									A very clear day with a deep blue sky but windy
14	63	28	48	0.00	0.0	0																									A very clear sky early until cirrus started comi
15	73	39	57	0.00	0.0	0																									A warm breezy day with a mostly clear AM sky but
16	72	42	56	0.05	0.0	0																									The AM was cloudy and the PM was partly cloudy t
17	58	50	51	1.34	0.0	0																									A very damp and rainy day until 1550. The most r
18	77	46	64	0.00	0.0	0																									A very clear AM with thin cirrus coming in at 13
19	78	59	67	0.00	0.0	0																									The AM was cloudy and the PM was about 65% cloud
20	68	43	43	0.00	0.0	0																									The AM sky was very clear until 1145 when cumulu
21	71	34	57	0.00	0.0	0																									Some frost on roofs at 7:15 with a very clear sk
22	77	45	53	0.00	0.0	0																									A warm and dry air mass today with a min. relati
23	67	47	67	0.66	0.0	0																									The AM was mostly dry but the PM was rainy and d
24	72	56	56	0.30	0.0	0																									Today was cloudy and warm all day with rain star
25	67	47	47	0.00	0.0	0																									The AM sky was cloudy until 1010 then became mos
26	57	37	37	T	0.0	0																									Today was a blustery windy day with virga seen o
27	53	30	34	0.00	0.0	0																									Only a light frost because of a night breeze. Th
28	53	24	29	0.00	0.0	0																									Mostly clear all day except from 1100 to 1215 wh
29	49	21	41	0.00	0.0	0																									A very cold AM with no frost as the air was so d
30	62	39	58	T	0.0	0																									A cloudy but much warmer day with an AM warm fro
31	71	58	67	0.68	0.0	0																									A cloudy stormy day with local tornado warnings

<p>63.9 39.6 SUM</p> <p>CONDITION OF RIVER AT GAGE</p> <p>A. Obstructed by rough ice B. Frozen, but open at gage C. Upper surface smooth ice D. Ice gorge above gage</p>	<p>5.33 1.9</p> <p>E. Ice gorge below gage F. Shore ice G. Floating ice H. Pool stage</p>	<p>CHECK BAR (for wire weight) NORMAL CHECK BAR</p> <p>READING DATE</p>	<p>OBSERVER</p> <p>AKQ Wakefield</p>	<p>STATION INDEX NO.</p> <p>44-7998-02</p>
--	---	---	--------------------------------------	--