

May 2022 West Henrico Co. - Glen Allen Weather Center 37.65537° N. 77.56929° W. - Koontz

		3	4	5	6	7	8	9	10	11	12	13	14	15	16	17	18	19
May 2022	Week Day	TEMPERATURE °F				TEMPERATURE °F				SKY		PRECIPITATION			FROZ. PRECIP.		1st PERIOD	
		MAX.	Time	MIN.	Time	RANGE	MEAN	CHANGE	SOIL	AM	PM	Liquid	1 Hr.	5 Min.	NEW	GROUND	START	END
May-01	Sun	79.1	16:35	50.6	1:54	28.5	64.9	9.0	61	2	2	T	T	T			0250	0255
May-02	Mon	85.4	15:41	58.1	5:57	27.3	71.8	6.9	62	0	0							
May-03	Tue	70.6	17:13	56.7	5:56	13.9	63.7	-8.1	64	2	2							
May-04	Wed	86.8	15:56	58.7	6:30	28.1	72.8	9.1	63	2	1							
May-05	Thu	70.5	10:49	57.8	6:35	12.7	64.2	-8.6	65	1	2							
May-06	Fri	72.8	14:41	57.6	4:07	15.2	65.2	1.1	64	2	2	0.91	0.70	0.16			0947	1025
May-07	Sat	63.0	0:05	47.5	23:53	15.5	55.3	-10.0	64	2	2	0.34	0.14	0.03			0001	0050
May-08	Sun	52.1	18:11	42.6	23:53	9.5	47.4	-7.9	62	2	2	0.05	0.02	0.01			0001	0410
May-09	Mon	68.6	17:07	38.7	5:44	29.9	53.7	6.3	60	0	0							
May-10	Tue	71.8	16:07	44.9	2:30	26.9	58.4	4.7	60	0	0							
May-11	Wed	72.5	13:44	50.4	6:23	22.1	61.5	3.1	61	0	2	T	T	T			1745	1815
May-12	Thu	66.4	16:09	54.8	3:15	11.6	60.6	-0.9	61	2	2	0.01	0.01	T			0940	1000
May-13	Fri	76.1	17:14	60.7	3:33	15.4	68.4	7.8	62	2	2	0.07	0.06	0.03			0455	0500
May-14	Sat	72.8	15:19	63.8	23:35	9.0	68.3	-0.1	63	2	2	0.20	0.13	0.08			0900	1200
May-15	Sun	85.9	16:29	61.5	5:13	24.4	73.7	5.4	64	1	1							
May-16	Mon	84.4	15:24	61.2	23:58	23.2	72.8	-0.9	66	2	1	0.03	0.03	0.03			1540	1600
May-17	Tue	83.3	16:58	52.1	6:13	31.2	67.7	-5.1	67	0	0							
May-18	Wed	79.8	15:23	54.0	5:39	25.8	66.9	-0.8	67	0	2							
May-19	Thu	88.1	16:21	64.2	5:12	23.9	76.2	9.3	68	1	1	0.01	0.01	0.01			0100	0350
May-20	Fri	94.7	14:50	68.1	0:01	26.6	81.4	5.3	69	0	0							
May-21	Sat	93.8	16:26	72.8	5:22	21.0	83.3	1.9	71	0	1							
May-22	Sun	90.2	16:03	69.1	6:05	21.1	79.7	-3.6	72	1	0	T	T	T			2005	2010
May-23	Mon	75.0	13:31	59.7	23:59	15.3	67.4	-12.3	73	2	2	0.13	0.06	0.02			1520	1530
May-24	Tue	62.7	15:34	57.1	23:56	5.6	59.9	-7.4	70	2	2	1.63	0.34	0.03			0001	1500
May-25	Wed	65.6	13:24	54.4	4:44	11.2	60.0	0.1	68	2	2	0.01	0.01	T			1200	1525
May-26	Thu	72.6	16:24	57.9	6:25	14.7	65.3	5.3	67	2	2	0.04	0.03	0.01			0515	0745
May-27	Fri	79.2	11:01	64.5	23:53	14.7	71.9	6.6	67	2	2	0.52	0.31	0.08			1104	1335
May-28	Sat	81.5	16:24	61.8	5:20	19.7	71.7	-0.2	68	0	1	0.10	0.06	0.01			0001	0320
May-29	Sun	85.3	17:25	57.4	6:09	27.9	71.4	-0.3	69	0	1							
May-30	Mon	89.6	17:17	63.8	6:00	25.8	76.7	5.3	70	0	0							
May-31	Tue	94.2	15:25	68.5	4:29	25.7	81.4	4.7	72	0	0							
TOTAL		2414.4		1791.0		623.4	2102.7	25.5	2040	34	39	4.05	1.91	0.50	0.00	0.00	Col.26-27	
NUMBER		31	31	31	31	31	31	31	31	31	31	14	14	12	0	0	DAILY AVE RH	
AVERAGE		77.88	15:08	57.77	9:14	20.11	67.83		65.81	1.10	1.26	Ave. Tot.	Ave. Max	Ave. Max			76.2	Percent
NORMALS		78.85		57.68		21.16	68.26		66.69	1.16	1.18	4.89	0.87	0.23	0.0	0.0	71.8	Percent
DEPARTURES		-0.96		0.09		-1.05	-0.4		-0.89	-0.06	0.08	-0.84	-0.17	-0.07			4.4	Percent
Max. Temps. >= 70°F		94.7	Ave.HighMax	72.8	Ave.HighMin	31.2	83.3	9.3	73.0	Whole Day		1.63	0.70	0.16			Precip	24 Hr.
2022 25		May-20	91.3	May-21	71.1	May-17	May-21	May-19	May-23	AVERAGE	1.18	May-24	May-06	May-06			Amount	1.73
Ave. 25.8			Dep.		Dep.					Normal	1.17						Date	May 23
Departure -0.8			3.4		1.7					Depart	0.01						Date	May 24
Min. Temps. >70°F		52.1	Ave.LowMax	38.7	Ave.LowMin	5.6	47.4	-12.3	60.0	SKY	AM	PM	>= 0.10	INCHES	>= 1.00	INCHES	>= 2.00	INCHES
2022 1		May-08	62.3	May-09	39.9	May-24	May-08	May-23	May-09	CLEAR	12	8	7	DAYS	1	DAYS	0	DAYS
Ave. 2.1			Dep.		Dep.				May-10	PT. CLO.	4	7	Hottest	83.3	Highest	Coollest	47.4	Lowest
Departure -1.1			-10.2		-1.2					CLOUDY	15	16	DAY	5-21	Mean	DAY	5-08	Mean
Days Max. <=32 °F		0		MAX.	>= 95	>= 90	>= 85	>= 80	>= 75	>= 70	>= 65	>= 60	>= 55	>= 50				
Days Max. >=90°F		5		DAYS	1	5	10	14	18	25	28	30	30	31				

20	21	22	23	24	25	26	27	28	29	30	31	32	33	34	35	36	37	38
May 2022	2nd PERIOD		WIND			REL. HUMIDITY		BAROMETRIC PRESSURE				GLAZE	SLEET	SNOW	FOG	R	DEW	FROST
	START	END	RUN	MAX.	TIME	MAX.	MIN.	MAX.	MIN.	AVE.	CHANGE							
May-01	0320	0330	55.2	14	12:53	90	57	30.14	29.97	30.06	-0.09						P	
May-02			56.7	18	15:49	97	35	30.03	29.95	29.99	-0.06						P	
May-03			63.9	16	20:33	96	77	30.11	29.96	30.04	0.04				1		4	
May-04			67.2	14	15:20	99	48	30.03	29.88	29.96	-0.08				2		3	
May-05			76.3	16	8:44	93	62	30.12	30.02	30.07	0.12						N	
May-06	1410	1420	70.6	14	2:46	98	76	30.03	29.48	29.76	-0.31					1, 2	1	
May-07	0235	0550	127.0	23	20:07	98	83	29.86	29.47	29.67	-0.09						P	
May-08	0600	0920	145.7	27	10:43	97	71	30.14	29.86	30.00	0.34						P	
May-09			92.2	21	10:05	65	28	30.24	30.12	30.18	0.18						4	
May-10			120.3	23	10:12	82	44	30.31	30.20	30.26	0.07						N	
May-11			121.7	20	16:11	87	48	30.28	30.18	30.23	-0.02						N	
May-12	1200	1400	96.7	16	10:29	97	86	30.23	30.15	30.19	-0.04						3	
May-13	0710	0905	76.5	14	17:23	99	74	30.19	30.08	30.14	-0.05						P	
May-14	1230	1330	24.8	9	12:43	98	85	30.11	29.92	30.02	-0.12						3	
May-15			36.2	15	14:49	100	54	29.97	29.80	29.89	-0.13				5		P	
May-16			83.7	19	12:15	94	48	29.87	29.64	29.76	-0.13						3	
May-17			55.5	18	12:14	92	35	29.96	29.85	29.91	0.15						3	
May-18			64.8	19	23:36	86	43	30.09	29.83	29.96	0.05						2	
May-19			59.7	18	0:50	92	44	29.85	29.73	29.79	-0.17						P	
May-20			97.2	21	15:49	88	41	29.96	29.82	29.89	0.10						1	
May-21			117.2	22	20:13	80	43	30.16	29.96	30.06	0.17					1	N	
May-22			110.6	23	18:04	90	56	30.14	30.00	30.07	0.01						2	
May-23	1805	2400	83.9	16	7:32	96	64	30.23	30.10	30.17	0.09						2	
May-24	1650	1950	84.8	19	15:29	98	94	30.27	30.13	30.20	0.04						P	
May-25			57.5	13	15:33	98	80	30.33	30.25	30.29	0.09						P	
May-26	0920	1050	26.5	9	15:52	98	82	30.31	30.06	30.19	-0.11						P	
May-27	2055	2135	95.2	27	11:05	99	73	30.06	29.76	29.91	-0.27					1	3	
May-28			43.5	12	9:59	99	49	29.97	29.78	29.88	-0.04						P	
May-29			29.4	12	10:45	98	47	30.11	29.97	30.04	0.16						5	
May-30			41.1	10	14:01	97	49	30.17	30.07	30.12	0.08						4	
May-31			36.8	10	9:09	96	49	30.11	29.98	30.05	-0.07						3	
TOTAL	Column 23		2318.4	528		2897	1825	933.38	927.97	930.68	TOTAL	0	0	0	3	4	16	0
NUMBER	Mar. Wind Run		31	31	31	31	31	31	31	31	NORMAL	0.0	0.0	0.0	3.1	4.9	16.8	0.3
AVERAGE	Total	2318.4	74.8	17.0	13:15	93.5	58.9	30.11	29.93	30.02	DEPART.	0.0	0.0	0.0	-0.1	-0.9	-0.8	-0.3
NORMALS	Miles	1762.7	57.7	17.8		93.5	50.2	30.10	29.95	30.02	Rating ▶	0	0	0	8	2	46	0
DEPARTURES	Miles	555.7	17.1	-0.7	Date Order	0.0	8.7	0.01	-0.01	0.00	Intensity	GLAZE	SLEET	SNOW	FOG	R	Dew	Frost
MAXIMUM DATES	Dates	145.7	27	N, SSW	100	94	30.33	30.25	30.29	0.34	GLAZE	SLEET	SNOW	FOG	R	Dew	Frost	
	1	May-08	May-08	10:43	May-15	May-24	May-25	May-25	May-25	May-08								
	2		May-08	11:05														
	3		May-27		Column 24													
4			Ave. Max.															
Min. Temps. >= 70°F	2022	1	Dates	24.8	9	31.2	65	28	29.85	29.47	29.67	-0.31	5. Very Heavy 4. Heavy-Unusual 3. Moderate - Ave. 2. Light - >= Ave. 1. Very Light - Slight - Trace M - Event with intensity missing					
Ave.	2.1	1	May-14	May-14	Dep.	May-09	May-09	May-19	May-07	May-07	May-06							
Departure	-1.1	2	May-26	-4.2														
Days Min. <=32°F	0	MIN.	≤ 80	≤ 75	≤ 70	≤ 65	≤ 60	≤ 55	≤ 50	≤ 45	≤ 40	≤ 35						≤ 32
Days Min >=70°F	1	DAYS	31	31	30	27	19	10	5	3	1	0	0	0				

May
2022

REMARKS FOR THE MONTH

May - 2022

May-01	EARLY AM SPRINKLE, CLOUDY BUT WARM DAY-TS PASSED JUST SOUTH OF US AROUND 2000 WITH SPRINKLES HERE FROM 1625-1630, 1810-1915, 2325-2340
May-02	SCATTERED CUMULUS FROM 1215-1645 OTHERWISE A CLEAR WARM AND BREEZY AFTERNOON
May-03	LIGHT FOG AT 0845 AND DAMP CLOUDY, COOL CONDITIONS UNTIL THE SKY CLEARED AT 1610 AND MAX. TEMP. OCCURRED AT 1713
May-04	MAX. FOG AT 0745 & CLEARED BY 0835-SKY THEN CLEARED BY NOON - CLEAR 1215-1515 BUT CLOUDY AGAIN AFTER 1645 TO 1800
May-05	CLEAR TO 0930 THE CUMULUS CAME IN AND WAS CLOUDY BY 1050-COOL THE REST OF THE DAY
May-06	3RD PD. OF PRECIP. 1630-1705, 4TH PD. 1840-2040, 5TH PD. 2250-2400-2 TS- 1ST WAS 1-1-2, 2ND WAS 2-1-3-NO CLOSE OR STRONG LIGHTNING STRIKES
May-07	A CLOUDY, DAMP. GLOOMY, MISTY AND CHILLY DAY WITH PM WIND TO 23 MPH AT 2007-DRIZZLE 0625-0630, 1030-1100, 1215-1300, 1400-2400
May-08	STILL VERY LIGHT DRIZZLE UNTIL 0920 AND A DAMP, CHILLY, WINDY DAY-MAX. WIND 27 MPH AT 1043
May-09	VERY CLEAR AND WINDY DAY WITH LOW RH OF 28% AND MAX. WIND WAS 21 MPH
May-10	NIGHT WIND GIVING NO DEW-TODAY WAS MOSTLY CLEAR EXCEPT 1220-1400 FROM CLOUDS THAT CAME IN FROM EAST
May-11	A CLEAR AM WITH CLOUDS STARTING TO COME IN AT 1110 AND IT WAS CLOUDY BY 1220 THEN SPRINKLES FROM 1745-1815
May-12	A CLOUDY DAMP DAY WITH AM DRIZZLE AND PM SPRINKLE ALSO WITH WINDY CONDITIONS
May-13	3RD PD. OF PRECIP. 1500-1535-CLOUDY EXCEPT A FEW BREAKS IN CLOUDINESS DURING DAY
May-14	3RD PD. OF PRECIP. 1640-1800 AND HEAVIEST SHOWER - A HUMID DAY WITH MIN. RH OF 85% AT 1514
May-15	BETWEEN RAIN AND FOG ALL SURFACES ARE WET-FOG WAS THE HEAVIEST AT 0630-THE HEAVIEST FOG OBSERVED IN AT LEAST LAST FEW YEARS-MUCH WARMER AND A PC DAY
May-16	AM WAS CLOUDY AND PM WAS ABOUT 60-65% CLOUDY
May-17	FIRST CUMULUS CAME IN AROUND NOON THEN SCATTERED CUMULUS UNTIL 1815 THE IT BECAME CLEAR AGAIN
May-18	A CLEAR AM WITH CLOUDS COMING IN AT 1350-PM AVERAGED CLOUDY
May-19	AM WAS CLOUDY UNTIL 0900 THEN CLEARING STARTED AND IT WAS CLEAR BY 1015 ONTO 1215-PM AVERAGED PC
May-20	VERY HOT FOR MAY-AIRPORT HAD 97 degrees F A NEW REC. FOR DATE-PREVIOUS REC. WAS 96 degrees F IN 1934
May-21	MOSTLY CLEAR UNTIL 1400 THEN CIRRUS CAME IN FROM SOUTH AND PM WAS PC -ANOTHER EC. HIGH AT AIRPORT OF 95 degrees F PREVIOUS REC. WAS 93 REC. IN 1934 AND 1962
May-22	MOSTLY CLOUDY UNTIL 0930 THEN CLEARING BY 1015 THEN SCATTERED CUMULUS UNTIL 1845 WHEN IT BECAME CLOUDY
May-23	A CLOUDY DAY WITH FIRST SHOWER BET. 1520-1530 GIVING 0.01 INCHES THEN RAINFALL STARTED AT 1805 THROUGH MIDNIGHT
May-24	MAX. RAIN IN 5 MINS. WAS ONLY 0.03 INCHES A VERY STEADY RAIN WITH VERY LITTLE RUNOFF
May-25	A CLOUDY COOL BREEZY DAY WITH PDS. OF LIGHT DRIZZLE BUT ONLY 0.01 INCHES OCCURRED BETWEEN NOON AND 1525
May-26	3RD PD. OF PRECIP. 1315-1415 AND A CLOUDY DAMP DAY WITH DRIZZLE
May-27	TS RATED 1-3-2 - ONLY A LITTLE THUNDER AND NO SEVERE WEATHER-3RD. PD. OF PRECIP. 2230 TO MIDNIGHT
May-28	CUMULUS STARTED COMING IN AT1050 AND PC BY 1100-PM AVERAGED PC BUT IT WAS CLEAR FROM 1830 TO DARK
May-29	CLOUDS CAME IN AT 1115 AND WAS CLOUDY BY NOON-BETWEEN 1315-1730 IT WAS PC THEN CLEAR AFTER 1900
May-30	A HEAVY DEW WITH A CLEAR NIGHT AND A COOL AM BUT A LARGE TEMP. RANGE TODAY- a CLEAR DAY EXCEPT SOME SCATTERED CUMULUS BETWEEN NOON AND 1500.
May-31	TODAY WAS WARMER AND A CLEAR DAY EXCEPT SOME SCATTERED CUMULUS BETWEEN 1420 AND 1730 THEN VERY CLEAR.

DATE

EXTENSION OF LENGTHY DAILY REMARKS

May-21 8 THUNDERS HEARD BETWEEN 2213-2230 - TS RATED 1-1-1 AS THERE WAS NO RAIN OR HIGH WIND ASSOCIATED WITH THE THUNDER

The daily records for the month are listed on page # 4 and not found in the remarks.

The link below explains how observations are taken at the Glen Allen Weather Station - Note the Numbers match the column numbers on the Observation Sheet

[Rules for making Observations in 2022](#)

DAILY RECORDS FOR THE MONTH

41

May
2022

The Glen Allen Station had 22 Records or Record Ties in May 2022

1

2

3

4

5

6

7

The maximum temperature on the 7th was 63&deg;F, a new 13-year cool daily maximum temperature record for the date - the old record was 65&deg;F in 2017.

7

The daily temperature range on the 7th was 15.5&deg;F, a new 13-year LOW daily temperature range record for the date - the old record was 17&deg;F in 2009.

8

The maximum temperature on the 8th was 52.1&deg;F, a new 13-year cool daily maximum temperature record for the date - the old record was 66.5&deg;F in 2017.

8

The daily temperature range on the 8th was 8&deg;F, a new 13-year LOW daily temperature range record for the date - the old record was 13&deg;F in 2013.

9

10

11

12

13

14

The daily temperature range on the 14th was 9&deg;F, a new 13-year LOW daily temperature range record for the date - the old record was 10&deg;F in 2014.

15

16

17

18

19

20

The maximum temperature on the 20th was 94.7&deg;F, a new 13-year daily HIGH maximum temperature record for the date - the old record was 89.4&deg;F in 2021.

21

The maximum temperature on the 21st was 93.8&deg;F, a new 13-year daily HIGH maximum temperature record for the date - the old record was 87&deg;F in 2014.

21

The minimum temperature on the 21st was 72.8&deg;F, a new 13-year warm daily minimum temperature record for the date - the old record was 68&deg;F in 2013.

22

The maximum temperature on the 22nd was 90.2&deg;F, a new 13-year daily HIGH maximum temperature record for the date - the old record was 89.4&deg;F in 2021.

23

24

The maximum temperature on the 24th was 62.7&deg;F, a new 13-year cool daily maximum temperature record for the date - the old record was 66.1&deg;F in 2017.

24

The daily temperature range on the 24th was 5.6&deg;F, a new 13-year LOW daily temperature range record for the date - the old record was 6.8&deg;F in 2020.

24

The daily precipitation on the 24th was 1.42 inches, a new 13-year HIGH daily precipitation record for the date - the old record was 0.46 inches in 2017.

25

The daily temperature range on the 25th was 10.6&deg;F, a new 13-year LOW daily temperature range record for the date - the old record was 15&deg;F in 2010 and 2009.

25

The maximum temperature on the 25th was 65&deg;F, a new 13-year cool daily maximum temperature record for the date - the old record was 71&deg;F in 2013.

26

The maximum temperature on the 26th was 72.6&deg;F, a new 13-year cool daily maximum temperature record for the date - the old record was 75&deg;F in 2013.

26

The daily temperature range on the 26th was 14.7&deg;F, a new 13-year LOW daily temperature range record for the date - the old record was 17&deg;F in 2018 and 2009.

26

The daily precipitation on the 26th was 0.04 inches, a new 13-year HIGH daily precipitation record for the date - the old record was 0.01 inches in 2021.

27

The daily temperature range on the 27th was 14.7&deg;F, a new 13-year LOW daily temperature range record for the date - the old record was 16.5&deg;F in 2018.

27

The daily precipitation on the 27th was 0.52 inches, a new 13-year HIGH daily precipitation record for the date - the old record was 0.49 inches in 2017.

28

29

The daily temperature range on the 29th was 27.9&deg;F, a new 13-year HIGH daily temperature range record for the date - the old record was 25.4&deg;F in 2019.

30

The daily temperature range on the 30th was 25.8&deg;F, a new 13-year HIGH daily temperature range record for the date - the old record was 25.5&deg;F in 2019.

31

The maximum temperature on the 31st was 94.2&deg;F, a new 13-year daily HIGH maximum temperature record for the date - the old record was 94&deg;F in 2011.

Springfield Park, Glen Allen, Virginia May 2022

May, with 4.05 inches of precipitation, was the 8th wettest May of the past 13 years. 1.73 inches of rain fell on the 23rd & 24th which was 43% of the precip. for the entire month. There were 14 days with measurable precip. but half of these were less than 0.10 inches.

May's mean temperature was 67.8 F a -0.4 F departure and the 6th coolest of 13 Mays on record. However, Springfield Park had five 90 F days in May; only 2019 had more with seven. The average max. temp. was 77.9 F a -1 F departure and the average min. was 57.8 F a 0.1 F departure. The ave. relative humidity for May was 76.2% a new record high for May because of cool damp days from the 5th -13th & 23rd - 27th but not humid days. There were 22 daily temp. records or ties set in May. The max. temp. range for May was only 31.2 F on the 17th. The highest temp. for May was 94.7 on the 20th which was second highest ever recorded for May in the past 13 years. The lowest max. was 52.1 F on the 8th the lowest max. temp. ever recorded here in May. The daily mean temp. of 83.3 F on May 21st was a new record high daily mean for May. The max. heat index on the 31st was also the 2nd highest on record for May. The month's lowest daily mean was 47.4 on the 8th and was second lowest on record for May. The maximum wind for the month was only 27 mph on the 8th and 27th as May had no strong storms.

2022 Spring Springfield Park, Glen Allen, Virginia											
Months	TEMPERATURE					PRECIPITATION			SNOW		
	Ave.	Ave		13 Yr.			13 Yr.			13 Yr.	
Spring	Max.	Min.	Mean	Ave.	Depart.	Total	Ave.	Depart.	Total	Ave.	Depart.
Mar.	63.88	39.43	51.66	48.88	2.8	5.33	3.53	1.80	1.9	2.7	-0.8
Apr.	70.27	45.66	57.96	58.99	-1.0	2.40	3.34	-0.94	0	0.0	0.0
May	77.84	57.77	67.80	68.26	-0.5	4.05	4.89	-0.84	0.0	0.0	0.0
SUM	211.99	142.86	177.42	176.14	1.3	11.78	11.76	0.02	1.9	2.7	-0.8
AVE.	70.66	47.62	59.14	58.71	0.4	3.93	3.92	0.01	0.6	0.9	-0.3

This was the 8th wettest spring season at Springfield Park with 11.78 inches. The average is 11.90 inches. This was also the 6th warmest spring since 2009.

Richmond International Airport

May's precipitation was 3.86 inches which was a departure of -0.14 inches and was the 59th wettest May since 1887.

The mean temp. for May was 68.5 F a 1.8 F dep. which made it the 25th warmest May on record since 1897. The average maximum for May was 78.7 F a 0.9 F departure & the 43rd warmest since 1897. The average minimum was 58.3 F a 2.6 F departure and the 15th warmest May reading since 1897. The max. temp. for May was 97°F on the 20th; only 3 Mays (1941,1991,2011) had higher max. temp. since 1897. The lowest recorded max. temperature in May was 53F on the 8th and only 9 years have had a lower max. temp. recorded in May

The Richmond International Airport had 2 daily records that either tied or were broken.

2 Record High Maximum Temperature

May 20th 97°F New Record - The old record was 96°F in 1934.

May 21st 95°F New Record - The old record was 93°F in 1934, 1962.

3 High Daily Mean Temperature

May 20th 82.0°F New Record – The old rec. was 81.5 in 1898.

May 21st 82.5°F New Record – The old rec. was 82.0 in 1903; **only 4 Mays have had a higher daily mean for the month.**

May 22nd 82.0°F Tied the record set in 1984, 1941

Spring 2022 Richmond International Airport											
Month	TEMPERATURE					PRECIPITATION			SNOWFALL INCHES		
	Max.	Min.	Mean	30 Year Ave.	Dep.	Actual	30 Year Ave.	Dep.	Actual	30 Year Ave.	Dep.
Mar.	64.0	40.7	52.35	48.4	4.0	3.51	4.00	0.49	0.4	1.1	-0.7
Apr.	71.4	46.5	58.95	58.4	0.6	2.22	3.18	0.96	0.0	0.0	0.0
May	78.7	58.3	68.50	66.7	1.8	3.86	4.00	0.14	0.0	0.0	0.0
SUM	214.2	145.4	179.8	173.5	6.3	9.59	11.18	1.59	0.0	1.1	-0.7
AVE.	71.40	48.5	59.9	57.8	2.1	3.20	3.73	0.53	0.0	0.4	-0.2

The spring season had 9.59 inches of precip. (max. was 21.70 in 1889- min. was 4.81 in 1985 since 1872). Richmond's spring season's temperature averaged 59.9 F which was the 11th warmest spring since 1880. The 0.4 inches of snow in March was the first snow in the spring season since 2018 when 4.0 inches was recorded in March 2018.

ACON - VA/NC/SC

The Atlantic Coast Observer Network: Virginia, North Carolina, South Carolina

May 2022

Station summary of Climatological Data

Observer: Lowell L. Koontz Acon Station ID: West Henrico - Glen Allen, VA

Observation Times: Temps Recorded 2400 Precipitation Recorded 2400

TEMPERATURE °F

A	AVERAGE MAXIMUM	77.88
B	AVERAGE MINIMUM	57.77
C	MEAN MONTHLY	67.83
C1	MEAN TEMP DEP.	-0.4
D	MAXIMUM	94.7
E	DATE(s) OF MAX.	May-20
F	MINIMUM	38.7
G	DATE(s) OF MIN.	May-09
H	# DAYS MAX. > = 90°	5
I	# MAX. < = 32°	0
J	MIN. < = 32°	0
K	MIN. < = 0°	0
K1	AVE RELATIVE HUMIDITY	76.2

WIND MPH

L	MAX. GUST	27
M	DIRECT. OF GUST	N, SSW
N	DATE	8 th & 27 th
	TIME	10:43 & 11:05

NUMBER DAYS WITH -

O	THUNDER	4
P	HAIL	0
Q	GLAZE	0
R	ICE PELLETS (SLEET)	0
R1	DENSE FOG < = 1/4 MILE	1

PRECIPITATION INCHES

T	MONTH TOTAL	4.05
U	CALENDAR DAY MAX.	1.63
U1	DATE OF MAX.	May-24
V	24-HR. PERIOD MAX.	1.73
V1	DATE(s) OF MAX. PD.	23 rd & 24 th
W	# DAYS > = 0.01"	14
X	# DAYS > = 1.00"	1
Y	YR. TO DATE TOT.	18.46
	MAX. 1 HR. PRECIP.	0.70
	MAX. 5 MIN PRECIP.	0.16

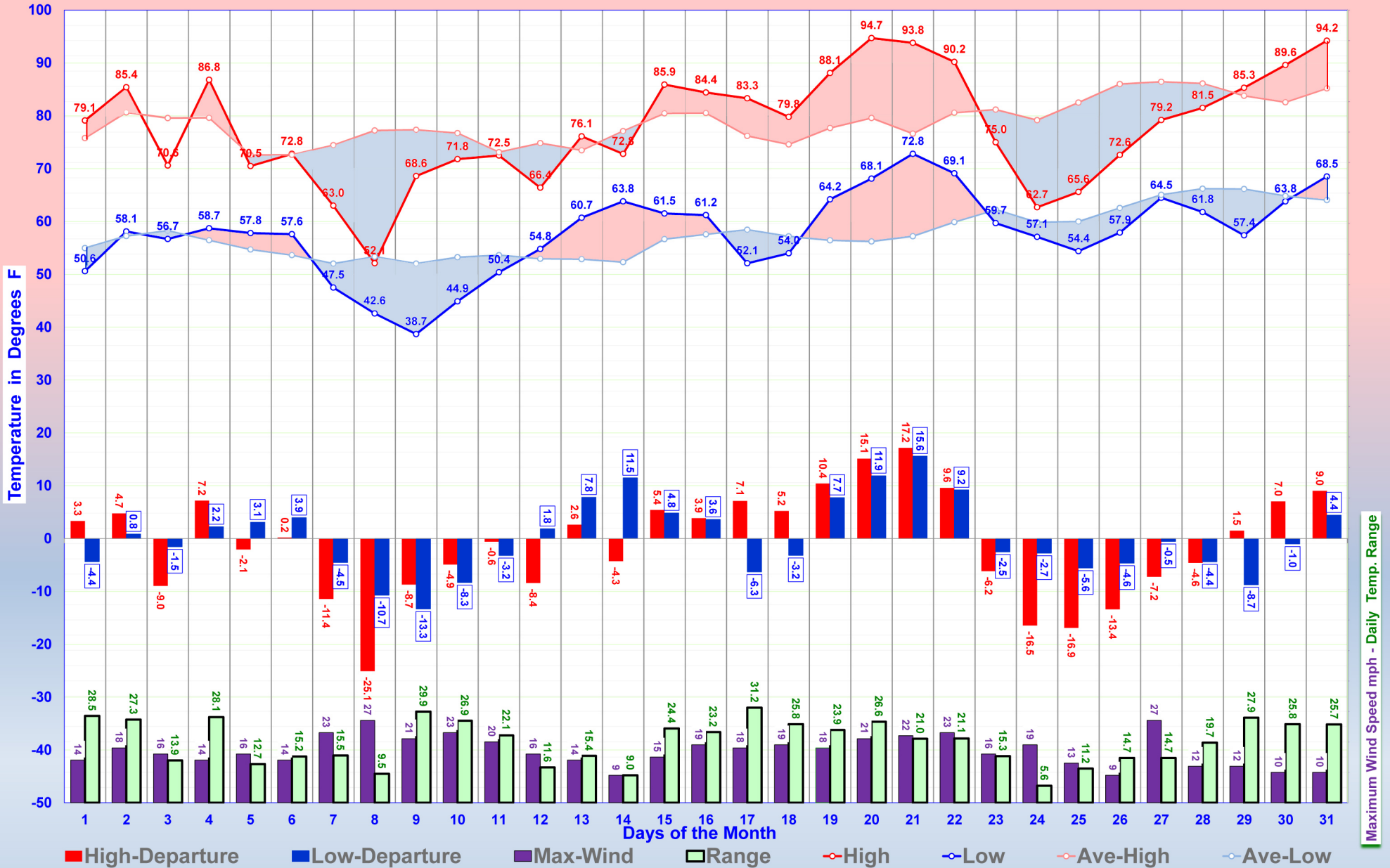
SNOWFALL INCHES

Z	DAILY MAXIMUM	0
1	DATE OF MAX.	
2	DAYS= > TRACE	0
3	DAYS > = 1.0"	0
4	MONTHLY TOTAL	0.0
5	2021- 2022 SEASON'S TOT.	10.1

BAROMETER

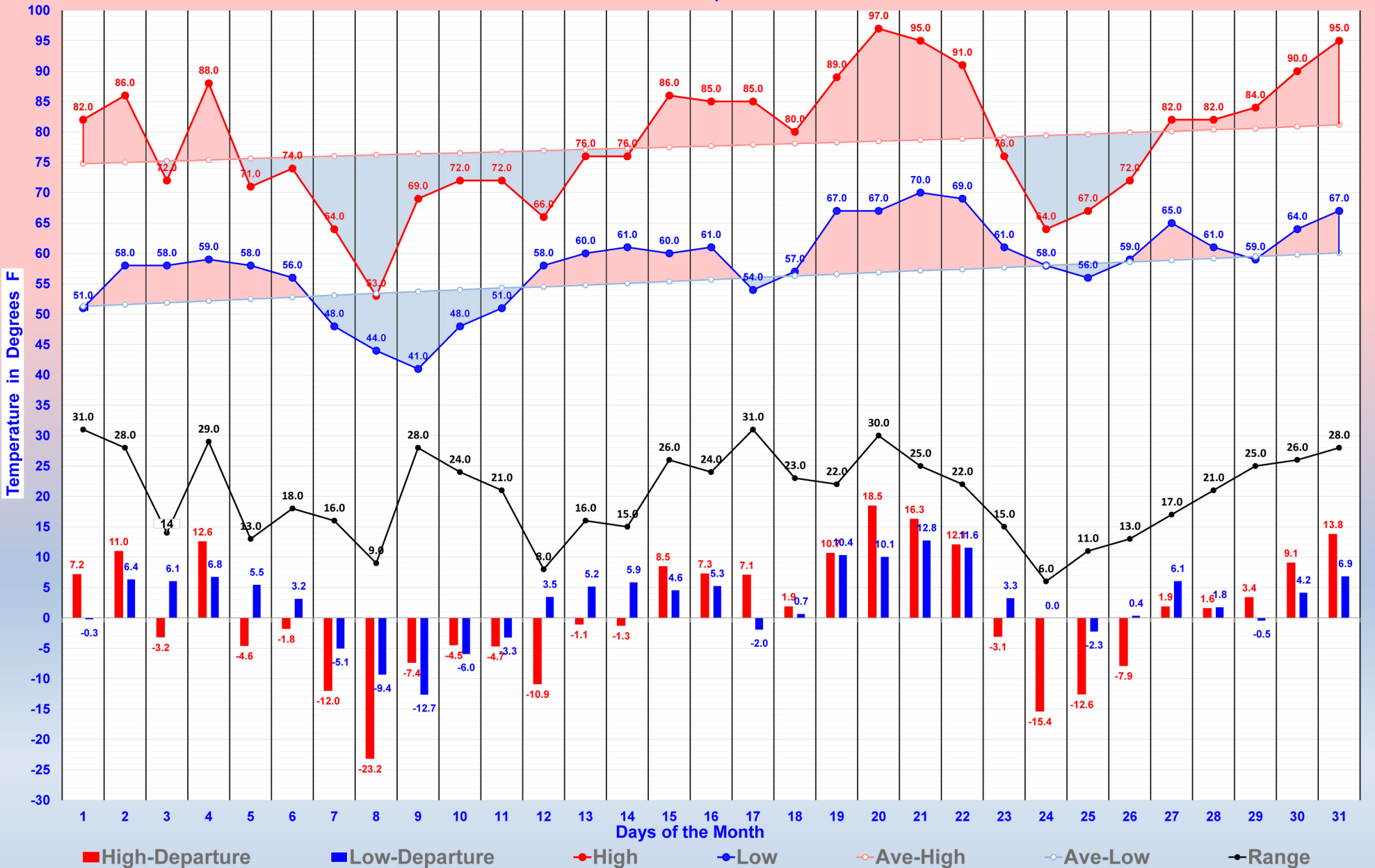
6	MAXIMUM	30.33
6A	DATE	May-25
7	MINIMUM	29.47
7A	DATE	May-07
8	AVE. MONTHLY PRESSURE	30.02
CWA	NWS COUNTY WARNING AREA	Henrico

SPRINGFIELD PARK'S MAY TEMPERATURE & WIND GRAPH



MAY TEMPERATURE GRAPH

The Richmond International Airport - Normals 1991-2020



STATION (Climatological) Springfield Park		(River Station, if different)		MONTH May	2022
STATE VA		COUNTY Henrico		RIVER	
TIME (local) OF OBSERVATION RIVER		TEMPERATURE MID	PRECIPITATION MID	STANDARD TIME IN USE	
TYPE OF RIVER GAGE		ELEVATION OF RIVER GAGE ZERO	FLOOD STAGE	NORMAL POOL STAGE	

WS FORM B-91
(03-09)

U.S. DEPARTMENT OF COMMERCE
NATIONAL OCEANIC AND ATMOSPHERIC ADMINISTRATION
NATIONAL WEATHER SERVICE

RECORD OF RIVER AND CLIMATOLOGICAL OBSERVATIONS

DATE	TEMPERATURE			PRECIPITATION			WEATHER (Observation Day)						RIVER STAGE			REMARKS (SPECIAL OBSERVATIONS, ETC.)						
	24 HRS ENDING AT OBSERVATION		AT OBSN	24 HR AMOUNTS		AT OB	Mark 'X' for all types occurring each day						Condition	Gage reading at ___ AM	Tendency							
	MAX	MIN		Rain, melted snow, etc. (in and hundredths)	Snow, ice pellets, hail (in and tenths)		A.M.			NOON							P.M.					
				Draw a straight line (—) through hours precipitation was observed, and a wavy line (---) through hours precipitation probably occurred unobserved			Fog	Ice pellets	Glaze	Thunder	Hail	Damaging winds	Time of occurrence if different from above									
1	79	51	69	T	0.0	0											One distant thunder heard at 2004 but wouldn't c					
2	85	58	65		0.00	0.0	0										Today had scattered cumulus clouds from 1215 to					
3	71	57	61		0.00	0.0	0										Light fog at 0845 and damp, cloudy, and cool con					
4	87	59	68		0.00	0.0	0										The max. fog occurred at 0745 and cleared at 083					
5	71	58	60		0.00	0.0	0										The sky was clear to 0930 then cumulus clouds ca					
6	73	58	63		0.91	0.0	0										Springfield Park had 4 separate periods of thund					
7	63	48	48		0.34	0.0	0										Today was a cloudy, damp, misty, gloomy day with					
8	52	43	43		0.05	0.0	0										Very light drizzle until 0920 and a cloudy, damp					
9	69	39	48		0.00	0.0	0										Today was very clear and much warmer but windy (
10	72	45	57		0.00	0.0	0										Today was clear except 1220 to 1400 when clouds					
11	72	45	57	T	0.0	0											Today had a clear AM with clouds coming in at 11					
12	66	55	62		0.01	0.0	0										A cloudy damp day with some AM drizzle and PM sp					
13	76	61	67		0.07	0.0	0										A very cloudy AM with a NNE breeze then a shift					
14	73	64	64		0.20	0.0	0										The heavy shower between 1715 and 1730 gave 0.1					
15	86	62	70		0.00	0.0	0										The heaviest AM fog at 0630 for 2022 so far that					
16	84	61	61		0.03	0.0	0										The AM was cloudy and the PM was around 60 to 65					
17	83	52	64		0.00	0.0	0										The AM was very clear with the first cumulus clo					
18	80	54	70		0.00	0.0	0										Today had a very clear AM with clouds coming in					
19	88	64	68		0.01	0.0	0										Early morning sprinkles with AM clouds until 090					
20	95	68	81		0.00	0.0	0										The Richmond International Airport had a max. of					
21	94	73	75		0.00	0.0	0										The Richmond International Airport had a max. o					
22	90	69	72	T	0.0	0											A mostly cloudy AM until 0930 with clearing by 1					
23	75	60	60		0.13	0.0	0										A cloudy day with the first shower 1520 to 1530					
24	63	57	57		1.63	0.0	0										A steady all day rain with little runoff. The m					
25	66	54	61		0.01	0.0	0										A cloudy cool breezy day with periods of very lig					
26	73	58	65		0.04	0.0	0										Today was a cloudy damp day with intermittent dr					
27	79	65	65		0.52	0.0	0										Today was cloudy and humid. Less than a dozen th					
28	82	62	62		0.10	0.0	0										The AM averaged clear and the PM averaged partl					
29	85	57	71		0.00	0.0	0										The AM started clear with clouds coming in at 11					
30	90	64	75		0.00	0.0	0										Today was very clear except for some scattered c					
31	94	69	75		0.00	0.0	0										The max. temperature today of 94.2 degrees F was					
	77.9	57.7	SUM		4.05			CHECK BAR (for wire weight) NORMAL CHECK BAR														

CONDITION OF RIVER AT GAGE		READING	DATE	Fog	Ice pel	Glaze	Thund	Hail	Dam winds	OBSERVER		
A. Obstructed by rough ice B. Frozen, but open at gage C. Upper surface smooth ice D. Ice gorge above gage E. Ice gorge below gage F. Shore ice G. Floating ice H. Pool stage												
				SUPERVISING OFFICE AKQ Wakefield				STATION INDEX NO. 44-7998-02				