



PAGE #1		Nov 2022 West Henrico Co. - Glen Allen Weather Center 37.65537° N. 77.56929° W. - Koontz																		
		TEMPERATURE °F			TEMPERATURE °F				SKY		PRECIPITATION			FROZ. PRECIP.		1st PERIOD				
Nov 2022	Week Day	MAX.	Time	MIN.	Time	RANGE	MEAN	CHANGE	SOIL	AM	PM	Liquid	1 Hr.	5 Min.	NEW	GROUND	START	END		
Nov-01	Tue	77.3	15:05	55.3	23:58	22.0	66.3	4.1	59	1	1									
Nov-02	Wed	68.1	14:24	49.7	7:17	18.4	58.9	-7.4	60	1	2									
Nov-03	Thu	72.2	14:57	49.7	8:19	22.5	61.0	2.1	59	1	1									
Nov-04	Fri	73.9	15:00	49.3	5:36	24.6	61.6	0.6	59	2	2									
Nov-05	Sat	80.3	13:11	60.4	6:28	19.9	70.4	8.7	60	1	1									
Nov-06	Sun	79.4	11:23	65.9	3:00	13.5	72.7	2.3	61	2	2	0.01	0.01	T			0725	0740		
Nov-07	Mon	83.2	13:16	57.6	22:23	25.6	70.4	-2.3	62	2	0									
Nov-08	Tue	61.7	0:23	44.4	23:58	17.3	53.1	-17.4	62	0	0									
Nov-09	Wed	62.1	13:05	39.0	6:34	23.1	50.6	-2.5	59	0	0									
Nov-10	Thu	69.9	14:42	45.6	3:08	24.3	57.8	7.2	58	2	2									
Nov-11	Fri	74.3	15:33	61.8	0:58	12.5	68.1	10.3	58	2	2	0.67	0.19	0.05			0300	1155		
Nov-12	Sat	76.3	12:08	60.8	7:08	15.5	68.6	0.5	61	0	1	0.01	0.01	T			0001	0055		
Nov-13	Sun	61.9	0:01	32.0	23:49	29.9	47.0	-21.6	61	1	1	T	T	T			0045	0050		
Nov-14	Mon	49.7	13:59	27.7	6:47	22.0	38.7	-8.3	58	0	1									
Nov-15	Tue	44.2	17:45	29.8	2:19	14.4	37.0	-1.7	56	2	2	1.24	0.41	0.11			1101	1250		
Nov-16	Wed	57.1	13:10	35.8	23:46	21.3	46.5	9.5	53	1	2									
Nov-17	Thu	50.0	12:30	27.0	23:55	23.0	38.5	-8.0	53	0	0									
Nov-18	Fri	48.6	13:17	23.3	6:09	25.3	36.0	-2.6	51	0	0									
Nov-19	Sat	51.0	13:42	27.7	6:09	23.3	39.4	3.4	50	1	0									
Nov-20	Sun	46.6	12:33	25.1	23:54	21.5	35.9	-3.5	49	0	0									
Nov-21	Mon	51.2	14:06	21.7	6:01	29.5	36.5	0.6	48	0	0									
Nov-22	Tue	59.2	12:50	25.2	7:16	34.0	42.2	5.8	47	0	0									
Nov-23	Wed	64.3	13:03	28.8	6:23	35.5	46.6	4.3	46	0	0									
Nov-24	Thu	62.7	12:15	29.4	6:55	33.3	46.1	-0.5	46	1	0									
Nov-25	Fri	66.1	15:39	38.5	23:54	27.6	52.3	6.3	47	2	1	0.04	0.03	0.01			0650	1025		
Nov-26	Sat	62.8	13:17	30.2	7:09	32.6	46.5	-5.8	48	0	1									
Nov-27	Sun	63.9	16:15	47.0	8:36	16.9	55.5	9.0	48	2	2	0.99	0.67	0.16			0640	0700		
Nov-28	Mon	62.8	10:25	38.5	23:59	24.3	50.7	-4.8	49	1	1									
Nov-29	Tue	56.4	12:11	31.9	7:11	24.5	44.2	-6.5	49	2	1									
Nov-30	Wed	62.1	15:38	38.6	23:59	23.5	50.4	6.2	49	2	2	0.51	0.17	0.02			0420	1010		
TOTAL NUMBER		1899		1198		701.6	1548.5	-11.9	1626	29	28	3.47	1.49	0.35	0.0	0	Col.26-27			
AVERAGE		63.31	12:51	39.92	11:53	23.39	51.62		54.20	0.97	0.93	Ave. Tot.	Ave. Max	Ave. Max	Ave. Tot.	Ave. Days	70.4	Percent		
NORMALS		60.06		37.69		22.36	48.88		54.17	0.91	1.01	3.38	0.45	0.11	0.0	0.0	70.4	Percent		
DEPARTURES		3.25		2.23		1.02	2.74		6.03	0.06	-0.08	0.09	1.04	0.24	0.0	0.0	0.0	Percent		
Max. Temps. >= 70°F		83.2	Ave.HighMax	65.9	Ave.HighMin	35.5	72.7	10.3	62.0	Whole Day		1.24	0.67	0.16	0	0.0	Precip	24 Hr.		
2022		9	Nov-07	74.6	Nov-06	58.2	Nov-23	Nov-06	Nov-11	AVERAGE		0.95	Nov-15	Nov-27	Nov-27			Precip		
Ave.		5.4	Dep.	8.6	Dep.				Nov-07	Normal		0.96						Amount		
Departure		3.6			7.7				Nov-08	Depart.		-0.01						Date		
Min. Temps. <= 32°F		44.2	Ave.LowMax	21.7	Ave.LowMin	12.5	35.9	-21.6	46.0	SKY		AM	PM	≥ 0.10	Precip.	≥ 1.00	Precip.	≥ 2.00	Precip.	
2022		13	Nov-15	44.2	Nov-21	23.4	Nov-11	Nov-20	Nov-13	CLEAR		11	11	4	DAYS	1	DAYS	0	DAYS	
Ave.		9.7	Dep.	0.1	Dep.				Nov-23	PT. CLO.		9	10	HOTTEST		72.7	Highest	Lowest	COOLEST	
Departure		3.3			-1.7				Nov-24	CLOUDY		10	9	DAY		11-06	Mean	Mean	DAY	
Days Max. <=32 °F		0		MAX. ≥ 80		≥ 75	≥ 70	≥ 65	≥ 60	≥ 55	≥ 50	≥ 45	≥ 40	≥ 35	≥ 30	≥ 25	≥ 20			
Days Max. >=90°F		0		DAYS		2	5	9	11	20	23	27	29	30	30	30	30	30		

PAGE #2																																						
Nov 2022 West Henrico Co. - Glen Allen Weather Center 37.65537° N. 77.56929° W. - Koontz																																						
20		21		22		23		24		25		26		27		28		29		30		31		32		33		34		35		36		37		38		
Nov 2022	2nd PERIOD		WIND			REL. HUMIDITY		BAROMETRIC PRESSURE																														
	START	END	RUN	MAX.	TIME	MAX.	MIN.	MAX.	MIN.	AVE.	CHANGE	GLAZE	SLEET	SNOW	FOG	DEW	FROST																					
Nov-01			30.9	11	19:07	98	53	30.21	30.01	30.11	0.05																							P				
Nov-02			35.4	14	10:07	97	63	30.35	30.21	30.28	0.17																							4				
Nov-03			23.6	10	12:10	98	61	30.39	30.30	30.35	0.06																							4				
Nov-04			22.7	12	23:51	100	61	30.39	30.26	30.33	-0.02																							4				
Nov-05			94.2	19	21:23	99	56	30.27	30.12	30.20	-0.13																							4				
Nov-06			93.8	18	11:33	93	66	30.22	30.14	30.18	-0.02																								1			
Nov-07			53.0	12	13:30	94	40	30.35	30.20	30.28	0.09																								2			
Nov-08			122.6	20	9:43	71	36	30.54	30.35	30.45	0.17																								N			
Nov-09			69.7	18	12:28	84	52	30.62	30.46	30.54	0.09																								N			
Nov-10			62.1	11	16:44	92	68	30.47	30.13	30.30	-0.24																								1			
Nov-11	1355	1430	119.3	23	18:35	98	88	30.13	29.53	29.83	-0.47																							2	P			
Nov-12			83.4	21	14:16	96	57	29.82	29.54	29.68	-0.15																								P			
Nov-13			95.1	20	2:50	86	44	30.28	29.81	30.05	0.37																								N			
Nov-14			25.0	16	9:57	92	44	30.43	30.28	30.36	0.31																									4		
Nov-15	1455	2255	53.7	15	20:09	97	78	30.43	30.04	30.24	-0.12																								3	2		
Nov-16			26.7	12	2:42	98	63	30.10	30.00	30.05	-0.18																									P		
Nov-17			31.9	14	11:30	85	39	30.24	30.07	30.16	0.11																									2		
Nov-18			56.4	17	12:52	93	41	30.31	30.19	30.25	0.09																									5		
Nov-19			46.4	18	14:46	90	33	30.33	30.08	30.21	-0.05																									3		
Nov-20			46.8	16	9:20	71	24	30.47	30.09	30.28	0.08																									N		
Nov-21			59.3	16	12:49	81	28	30.53	30.37	30.45	0.17																									2		
Nov-22			33.7	11	12:54	82	25	30.43	30.26	30.35	-0.11																									2		
Nov-23			15.8	8	12:05	88	22	30.34	30.24	30.29	-0.05																										3	
Nov-24			26.9	10	11:34	91	34	30.41	30.19	30.30	0.01																										3	
Nov-25			42.8	15	16:12	93	55	30.19	29.88	30.04	-0.27																									N		
Nov-26			50.8	13	11:24	94	36	30.23	30.05	30.14	0.11																									4	2	
Nov-27	0720	1450	94.8	22	18:31	98	64	30.05	29.50	29.78	-0.37																									N	1	
Nov-28			54.4	17	11:27	91	54	30.15	29.60	29.88	0.10																									3		
Nov-29			45.6	14	22:55	97	54	30.32	30.14	30.23	0.36																									4	2	
Nov-30	1105	1140	101.1	24	9:31	97	41	30.17	29.79	29.98	-0.25																									P		
TOTAL NUMBER			1717.9	467		2744	1480	909.17	901.83	905.50	TOTAL	0	0	0	2	1	11	12																				
	Mar. Wind Run		30	30	30	30	30	30	30	30	NORMAL	0.0	0.2	0.6	2.5	0.5	11.4	9.1																				
AVERAGE	Total	1717.9	57.3	15.6	13:33	91.47	49.33	30.31	30.06	30.18	DEPART.	0.0	-0.2	-0.6	-0.5	0.5	-0.4	2.9																				
NORMALS	Miles	1499.1	55.5	16.91		92.3	48.6	30.25	30.02	30.13	Rating ▶	0	0	0	6	2	34	31																				
Departures	Miles	218.8	1.8	-1.34		-0.8	0.7	0.06	0.04	0.05	Intensity	GLAZE	SLEET	SNOW	FOG		Dew	Frost																				
MAXIMUM DATES		122.6	24		SSW	100	88	30.62	30.46	30.54	0.37																											
		1	Nov-08	Nov-30	9:31	Nov-04	Nov-11	Nov-09	Nov-09	Nov-09	Nov-13																											
		2																																				
Min. Temps. >= 70°F				Ave. Max.																																		
		2022	0																																			
		Ave.	0.0	Dep.																																		
		Departure	0.0	-6.7																																		
Days Min. <=32 °F		13	MIN.	≤ 75	≤ 70	≤ 65	≤ 60	≤ 55	≤ 50	≤ 45	≤ 40	≤ 35	≤ 30	≤ 25	≤ 20	≤ 15																						
Days Min >=70°F		0	DAYS	30	30	29	27	25	24	19	18	13	11	4	0	0																						

39

40

Nov
2022

REMARKS FOR THE MONTH

November - 2022

Nov-01	MOSTLY CLOUDY TO 1015 THEN CLEAR TO 1445 THEN CLOUDY TO PC TO 1815-WARM FOR NOV.
Nov-02	AM CIRRUS CLOUDS INCREASED AND IT WAS CLOUDY AFTER 1115 FOR REST OF DAY
Nov-03	AM CLOUDY TO 0955 THEN CLEAR TO NOON -PM WAS PC WITH CUMULUS
Nov-04	HEAVIEST FOG WAS AT 0735 AND FOG ENDED BY 1100. SKY CLEARED TO THIN CIRRUS AND THEN BECAME CLOUDY AT 1245 TO 1615 FOLLOWED BY VARIABLE SKY
Nov-05	MUCH SOLAR RADIATION THROUGH THIN CIRRUS IN AM-PM HAD CUMULUS AND CIRRUS AND WAS PC AND BREEZY-THIS WAS OUR 1ST 80 DEGREE DAY IN NOV. SINCE
Nov-06	RAINBOW SEEN TO NW AT 0735-A CLOUDY BREEZY AND WARM DAY
Nov-07	70.1 degrees F AT MIDNIGHT-(RARE)-AM CLOUDS DIDN'T CLEAR UNTIL 1030-1045
Nov-08	A VERY CLEAR WINDY DAY AND MUCH COOLER
Nov-09	A VERY CLEAR DAY UNTIL 1645 WHEN ALTOCUMULUS CAME IN-TROPICAL STORM IN FORECAST FOR FRIDAY THE 11TH-BAROMETER NOW HIGH AT 30.62 INS. AT 0915
Nov-10	CLOUDY ALL DAY BUT SUN THROUGH THIN CLOUDS BUT STILL ENOUGH TO CAST SHADOWS EXCEPT FOR A MOSTLY CLEAR SKY IN PD. 1140-1220
Nov-11	TS RATED 2-1-2 APPROX. 12 THUNDERS HEARD-1ST AT 1333 AND LAST AT 1434-PEAK WIND OF 23 MPH AT 1835-3RD PD. OF PRECIP. 2055-2230, 4TH PD. 2355-2400
Nov-12	VERY WARM FOR NOV. AND WINDY WITH CLEAR AM AND CLOUDS CAME IN AT 1230 AND PM AVERAGED ABOUT 60% CLOUDY
Nov-13	AM WAS CLOUDY TO 0800 THEN CLEAR TO PC TO NOON-PM AVE. ABOUT 30-40% CLOUDY
Nov-14	HEAVY KILLING FROST WITH LOWEST TEMP. SINCE MARCH 29, 2022 WHEN IT WAS 21.4 degrees F
Nov-15	ROOFS WERE ABOUT 30% WHITE WITH FROST BUT NONE ON GRASS-MOST RAIN IN A DAY SINCE SEPT. 11, 2022 WHEN WE HAD 1.65 INCHES
Nov-16	LIGHT FOG UNTIL 0730-CLEARING STARTED AT 1000 THEN CLEAR BY 1020-AM EST. AT 60% CLOUDY
Nov-17	A VERY CLEAR COLD DAY FOR MID-NOV. WITH MIN. DEW POINT OF 24.2 degrees F AT 2121
Nov-18	A VERY CLEAR AND COLD DAY FOR MID.-NOV. WITH MIN. DEW POINT OF 21.6 degrees F AT 0539
Nov-19	THIN AM CIRRUS UNTIL 1115-VERY CLEAR BREEZY CHILLY PM
Nov-20	A VERY CLEAR DAY THAT WAS BREEZY WITH A MIN. DEW POINT OF 9.7 degrees F AT 1504-NO AM FROST AIR MASS TOO DRY
Nov-21	A VERY CLEAR DAY AND BREEZY WITH A WIND SHIFT TO SOUTH AFTER 1100
Nov-22	A VERY CLEAR DAY WITH LOW RH OF 25% AT 1227 AND WARMER
Nov-23	A VERY CLEAR DAY WITH LOW RH OF 22% AT 1232 AND WARMER
Nov-24	AM HAD MANY THIN FIBROUS CIRRUS BUT PM WAS VERY CLEAR
Nov-25	A CLOUDY AM WITH VERY LIGHT RAIN AND CLEARING SKY AT 1230 AND TOTALLY CLEAR BY 1445 THEN PC SKY TO 1630 THEN CLEAR AGAIN
Nov-26	A VERY CLEAR AM AND PM WAS CLEAR TO 1500 WHEN CIRRUS CLOUDS CAME IN
Nov-27	EARLY AM REL. HUMIDITY 71% BEFORE THE RAIN-MAX. RAINFALL INTENSITY OCCURRED BET. 1210-1220 THEN RAPID CLEARING STARTED AT 1530
Nov-28	A VARIABLE SKY AND BREEZY CONDITIONS WITH A MAX. WIND GUST OF 17 MPH AT 1127
Nov-29	THE AM WAS CLOUDY AS THIN CIRRUS COVERED MOST OF THE SKY & DECREASING THE AMOUNT OF SOLAR RADIATION PASSING THROUGH. THE PM WAS PARTLY CLOUDY
Nov-30	A RAINY AM FROM A COLD FRONT APPROACHING AND THE HEAVIEST RAIN CAME BETWEEN 0800 AND 0900. THE COLD FRONT PASSED THIS STATION AT 1725.

DATE

EXTENSION OF LENGTHY DAILY REMARKS

Nov-05 NOV. 3, 2017 WHEN IT WAS 82.2 degrees F AND 84.1 ON NOV. 3, 2016

ABOUT 25 PERCENT OF THE TREES ON AVERAGE STILL HAD LEAVES UP UNTIL THE LAST DAY OF NOVEMBER. THE RAIN AND THE WIND OF THE 30TH REMOVED MOST OF THE LEAVES THAT WERE LEFT.
THIS WAS THE FIRST YEAR I CAN REMEMBER A FEW OF OUR NEIGHBORS PUTTING UP CHRISTMAS LIGHT ON TREES THAT STILL HAD THEIR LEAVES AND ONE TREE WAS A MAPLE.

The daily records for the month are listed on page # 4 and not found in the remarks.

The link below explains how observations are taken at the Glen Allen Weather Station - Note the Numbers match the column numbers on the Observation Sheet

[Rules for making Observations in 2022](#)

DAILY RECORDS FOR THE MONTH

The Springfield Park Station had 15 Records or Record Ties in November 2022

41

Nov

2022

1	The maximum temperature on the 1st was 77.3°F, a new 14-year daily HIGH maximum temperature record for the date - the old record was 75°F in 2008.
2	
3	
4	
5	The maximum temperature on the 5th was 80.3°F, a new 14-year daily HIGH maximum temperature record for the date - the old record was 74.3°F in 2015. The minimum temperature on the 5th was 60.4°F, a new 14-year warm daily minimum temperature record for the date - the old record was 59.9°F in 2015.
6	The maximum temperature on the 6th was 79.4°F, a new 14-year daily HIGH maximum temperature record for the date - the old record was 79.1°F in 2015. The minimum temperature on the 6th was 65.9°F, a new 14-year warm daily minimum temperature record for the date - the old record was 62.7°F in 2015.
7	The maximum temperature on the 7th was 83.2°F, a new 14-year daily HIGH maximum temperature record for the date - the old record was 77.7°F in 2020. The minimum temperature on the 7th was 57.6°F, a new 14-year warm daily minimum temperature record for the date - the old record was 51.4°F in 2015.
8	
9	
10	
11	
12	The maximum temperature on the 12th was 76.3°F, a new 14-year daily HIGH maximum temperature record for the date - the old record was 74°F in 2012. The minimum temperature on the 12th was 60.8°F, a new 14-year warm daily minimum temperature record for the date - the old record was 50.8°F in 2020.
13	
14	
15	
16	
17	The minimum temperature on the 17th was 27°F, a new 14-year LOW daily minimum temperature record for the date - the old record was 29°F in 2018 and 2008.
18	
19	
20	The maximum temperature on the 20th was 46.6°F, a new 14-year cold daily maximum temperature record for the date - the old record was 50°F in 2013.
21	The minimum temperature on the 21st was 21.7°F, a new 14-year LOW daily minimum temperature record for the date - the old record was 24°F in 2014.
22	The daily temperature range on the 22nd was 34°F, a new 14-year HIGH daily temperature range record for the date - the old record was 32°F in 2014.
23	
24	The daily temperature range on the 24th was 33.3°F, a new 14-year HIGH daily temperature range record for the date - the old record was 31.8°F in 2015.
25	
26	The daily temperature range on the 26th was 32.6°F, a new 14-year HIGH daily temperature range record for the date - the old record was 32°F in 2019.
27	
28	
29	
30	

Springfield Park, Glen Allen November 2022

November was extremely warm for the first 12 days with a rare 70.1 degrees F at midnight on the Dec 6th. The next ten days were below average and the remaining days were above average.

The precip. for Nov. was 3.47 inches which was a departure of 0.09 inches making it the 8th wettest Nov. since 2008. The most precip. in a day and in a 24 -hour period was 1.24 inches on the 15th. Precipitation occurred on only 7 days and the 0.16 inches of rain in 5 minutes on Nov. 27th tied for third place for the most intense 5 min. precip.

This November's mean of 51.6 degrees F, a departure of 2.7 degrees from the 14-year ave., was the 5th warmest on record. The highest maximum temp. for November was 83.2 degrees on the 7th. This month also had 2 days equal to or warmer than 80 degrees which is a new 14-year record for Nov. The ave. min. temp. was 39.9 degrees which was the 5th highest on record for November. The lowest minimum was 21.7 degrees recorded on the 21st. The highest minimum was 65.9 degrees which was a 7.7 degrees departure and the 2nd highest on record. There were 13 days that the minimum temperature was less than or equal to 32°F which was 3.3 days above the average. There was no snow recorded in November at Springfield Park. The maximum wind gust was only 24 mph from the SSW on the 30th an new 14 year low for Nov. The highest barometer was 30.62 inches on the 9th and the lowest was 29.50 inches on November 27th.

2022 AUTUMN SEASON SEP, OCT, NOV									
Winter Season Months	Mean Temp. °F	14-YR Ave. °F	Temp. Dep. °F	Total Prec. Inches	14-YR Ave. Inches	Prec. Dep. Inches	Total Snow Inches	14-YR Ave. Inches	Snow Dep. Inches
SEP.	71.2	72.0	-0.8	3.27	3.93	-0.66	0.0	0.0	0.0
OCT.	56.7	60.9	-4.3	2.06	4.47	-2.41	0.0	0.0	0.0
NOV.	51.6	48.9	2.7	3.47	3.38	0.09	0.0	0.0	0.0
SUM	179.5	181.8	-2.3	8.80	11.79	-2.99	0.0	0.0	0.0
AVE.	59.8	60.6	-0.8	2.93	3.93	-1.00	0.0	0.0	0.0

This autumn was 0.8°F cooler than ave. based on a 14-year ave. as both Sep & Oct were below average. This stat. had the 6th driest autumn with only 8.80 inches of precipitation and a departure of -2.95 inches.

Richmond International Airport November 2022

The November mean temperature was 53.1 F which was a departure from normal of 3.5 degrees F.

The 3.71 inches of precipitation was a departure of -0.65 inches making this month the 36th wettest November since 1887. November had only 5 days with measurable precipitation. Only 14 Novembers since 1887 have had less days with precip. The Airport's greatest daily precipitation was only 1.30 inches on the 11th. There was no snow in November at the Airport.

The highest temp. was 84 degrees on November 7th and the lowest temperature was 24°F on the 21st. Only 4 Novembers since 1897 have had a higher maximum temp. than 84 F and the record is 86 F. The daily mean temp on the 6th was 73.5 F. Only two Novembers since 1897 have had a higher daily mean in Nov.; they were 1993 and 1971. This November had 4 daily mean records for the month. The highest monthly minimum was 65 degrees on the 6th. Only 5 Novembers have been higher and the record was 70 degrees F in 1971. The Airport had 11 days the minimum temp. was 32°F or less. The highest min. temp. range for Nov. was 14 degrees F on the 11th and 12th which is the most for any Nov. since 1897; only 1938, 1964, and 1990 equals this. The Airport had 9 daily records for the month listed below and all were for heat.

2022 AUTUMN SEASON SEP, OCT, NOV									
Winter Season Months	Mean Temp. °F	30 - YR Ave. °F	Temp. Dep. °F	Total Prec. Inches	30 - YR Ave. Inches	Prec. Dep. Inches	Total Snow Inches	30 - YR Ave. Inches	Snow Dep. Inches
SEP.	72.8	71.2	1.6	1.68	4.61	-2.93	0.0	0.0	0.0
OCT.	57.7	60.0	-2.3	1.91	3.39	-1.48	0.0	0.0	0.0
NOV.	53.1	49.6	3.5	3.71	3.06	0.65	0.0	0.0	0.0
SUM	183.6	180.8	2.8	7.30	11.06	-3.76	0.0	0.0	0.0
AVE.	61.2	60.27	0.9	2.43	3.69	-1.25	0.0	0.0	0.0

Richmond's fall season was 1.0 degree warmer than normal based on a 30-yr. average. The fall season ave. of 61.2F was the 35th warmest autumn since 1880. (Not excluding the 1890 rec.) The warmest autumn average was 65.8°F in 1881. The fall precipitation was 7.30 inches, a departure of -3.76 inches, based on a 30-year average. This is the driest autumn since 2019 when only 6.88 inches was recorded. The driest of all autumns was 1941 when only 2.24 inches was recorded.

Record High Daily Maximums-2 -----All 9 records were for high temperatures

Nov 06th 82°F New Record - The old record was 81°F in 1975.

Nov 07th 84°F New Record - The old record was 79°F in 1975, 1978.

Record High Daily Maximums-3

Nov 06th 65°F New Record – The old record was 64 in 1977, 2003.

Nov 11th 62°F Tied the record set in 2020

Nov 12th 64°F New Record – The old record was 63 in 1935.

Record High Daily Mean-4

Nov 06th 73.5°F New Record – The old record was 71.5 in 1938.

Nov 07th 72.0°F New Record – The old record was 68.0 in 1977.

Nov 11th 69.0°F New Record – The old record was 68.5 in 2020.

Nov 12th 71.0°F New Record – The old record was 70.5 in 1935.

ACON - VA/NC/SC

The Atlantic Coast Observer Network: Virginia, North Carolina, South Carolina

November 2022

Station summary of Climatological Data

Observer: Lowell L. Koontz West Henrico - Glen Allen, VA

Observation Times: Temps Recorded 2400 Precipitation Recorded 2400

TEMPERATURE °F

A	MEAN MAXIMUM	63.31
B	MEAN MINIMUM	39.92
C	MEAN MONTHLY	51.62
C1	MEAN TEMP DEP.	2.7
D	MAXIMUM	83.2
E	DATE(s) OF MAX.	Nov-07
F	MINIMUM	21.7
G	DATE(s) OF MIN.	Nov-21
H	# DAYS MAX. > = 90°	0
I	# MAX. < = 32°	0
J	MIN. < = 32°	13
K	MIN. < = 0°	0
K1	AVE RELATIVE HUMIDITY	70.4

WIND MPH

L	MAX. GUST	24
M	DIRECT. OF GUST	SSW
N	DATE	Nov-30
	TIME	9:31

NUMBER DAYS WITH -

O	THUNDER	1
P	SNOW	0
Q	GLAZE	0
R	ICE PELLETS (SLEET)	0
R1	DENSE FOG < = 1/4 MILE	1

PRECIPITATION INCHES

T	MONTH TOTAL	3.47
U	CALENDAR DAY MAX.	1.24
U1	DATE OF MAX.	Nov-15
V	24-HR. PERIOD MAX.	1.24
V1	DATE(s) OF MAX. PD.	Nov-15
W	# DAYS > = 0.01"	7
X	# DAYS > = 1.00"	1
Y	YR. TO DATE TOT.	39.10
	MAX. 1 HR. PRECIP.	0.67
	MAX. 5 MIN PRECIP.	0.16

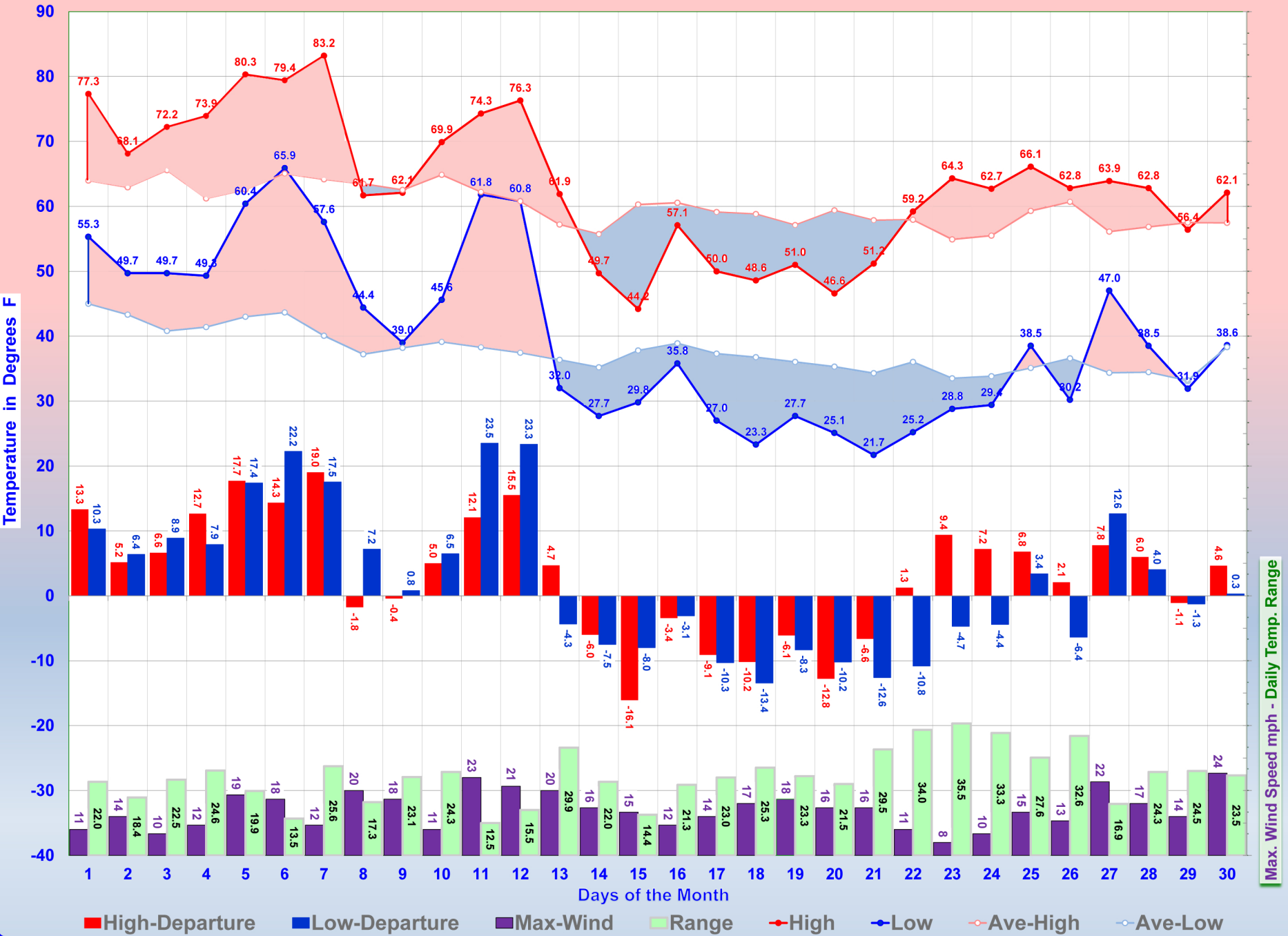
SNOWFALL INCHES

Z	DAILY MAXIMUM	0
1	DATE OF MAX.	
2	DAYS= > TRACE	0
3	DAYS > = 1.0"	0
4	MONTHLY TOTAL	0.0
5	2022- 2023 SEASON'S TOT.	0.0

BAROMETER

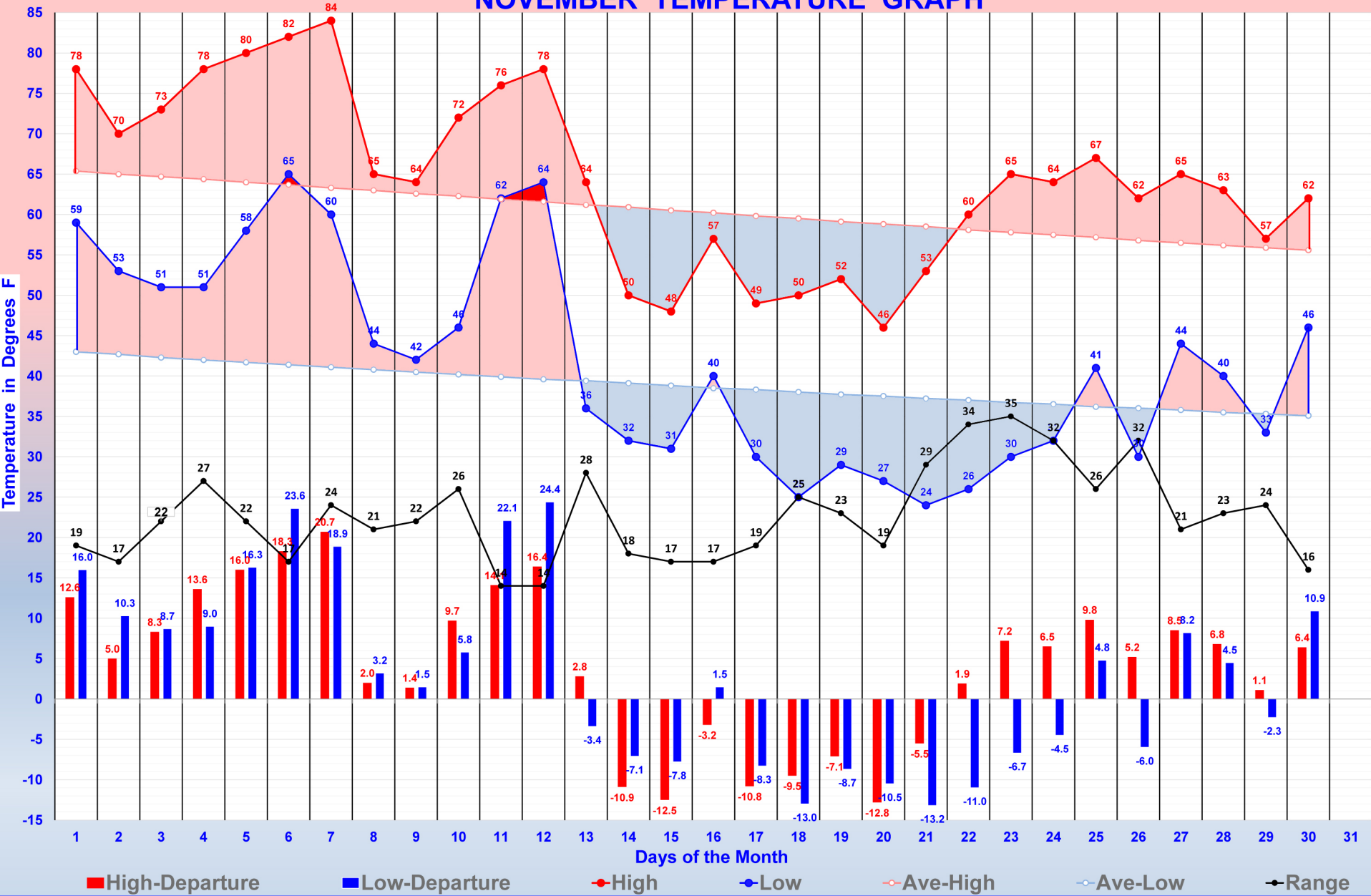
6	MAXIMUM	30.62
6A	DATE	Nov-09
7	MINIMUM	29.50
7A	DATE	Nov-27
8	AVE. MONTHLY PRESSURE	30.18
CWA	NWS COUNTY WARNING AREA	Henrico

SPRINGFIELD PARK'S NOVEMBER TEMPERATURE & WIND GRAPH



Max. Wind Speed mph - Daily Temp. Range

The Richmond International Airport NOVEMBER TEMPERATURE GRAPH



STATION (Climatological) Springfield Park		(River Station, if different)		MONTH Nov	2022
STATE VA		COUNTY Henrico		RIVER	
TIME (local) OF OBSERVATION RIVER		TEMPERATURE MID	PRECIPITATION MID	STANDARD TIME IN USE	
TYPE OF RIVER GAGE	ELEVATION OF RIVER GAGE ZERO	FLOOD STAGE	NORMAL POOL STAGE		

WS FORM B-91 (03-09) U.S. DEPARTMENT OF COMMERCE NATIONAL OCEANIC AND ATMOSPHERIC ADMINISTRATION NATIONAL WEATHER SERVICE

RECORD OF RIVER AND CLIMATOLOGICAL OBSERVATIONS

DATE	TEMPERATURE			PRECIPITATION			WEATHER (Observation Day)						RIVER STAGE			REMARKS <i>(SPECIAL OBSERVATIONS, ETC.)</i>																				
	24 HRS ENDING AT OBSERVATION		AT OBSN	24 HR AMOUNTS Rain, melted snow, etc. (in and hundredths)	Snow, ice pellets, hail (ins and tenths)	AT OB Snow, ice pellets, hail ice on ground (in)	Mark 'X' for all types occurring each day						Time of occurrence if different from above	Condition	Gage reading at ___ AM		Tendency																			
	MAX	MIN					Draw a straight line (-----) through hours precipitation was observed, and a wavy line (~~~~~) through hours precipitation probably occurred unobserved			Fog	Ice pellets	Glaze						Thunder	Hail	Damaging winds																
				A.M.	NOON	P.M.																														
1	77	55	55	0.00	0.0	0													Today was mostly cloudy to 1015 then clearing to																	
2	68	50	55	0.00	0.0	0													AM cirrus clouds increased to a cloudy sky by 11																	
3	72	50	54	0.00	0.0	0													A mild Nov. day with AM clouds to 0955 then clea																	
4	74	49	65	0.00	0.0	0								X					The heaviest fog was at 0730 and ended at 1100.																	
5	80	60	69	0.00	0.0	0													The 80 degrees F max. temp today was the latest																	
6	79	66	70	0.01	0.0	0													A morning rainbow seen to the NW at 0735. Today																	
7	83	58	61	0.00	0.0	0													AM clouds didn't clear until 1040 and the PM wa																	
8	62	44	44	0.00	0.0	0													A very clear day with low RH and much cooler. Th																	
9	62	39	48	0.00	0.0	0													A very clear and breezy day until 1645 when clou																	
10	70	46	62	0.00	0.0	0													Cloudy all day except between 1140 and 1220 and																	
11	74	62	69	0.67	0.0	0												X	Around 12 thunders heard with main storm to our																	
12	76	61	62	0.01	0.0	0	—												A very warm, clear and windy AM. The PM had clou																	
13	62	32	32	T	0.0	0	—												The AM was cloudy to 0800 then clear to partly c																	
14	50	28	32	0.00	0.0	0													A heavy killing frost (our 1st killing frost) an																	
15	44	30	39	1.24	0.0	0													The AM was totally cloudy with altostratus and t																	
16	57	36	36	0.00	0.0	0								X					Light AM fog until 0730. The sky started to clea																	
17	50	27	27	0.00	0.0	0													A very clear cold day for mid-Nov. with a low de																	
18	49	23	32	0.00	0.0	0													A very clear and cold day for the Nov. 18th and																	
19	51	28	38	0.00	0.0	0													A little altocumulus early then thin cirrus in t																	
20	47	25	25	0.00	0.0	0													A very clear day that was breezy and very dry.																	
21	51	22	34	0.00	0.0	0													A very clear breezy day with a wind shift to sou																	
22	59	25	34	0.00	0.0	0	1	2	3	4	5	6	7	8	9	10	11	1	2	3	4	5	6	7	8	9	10	11					Today was a very clear day with low RH of 25% at			
23	64	29	37	0.00	0.0	0																												Today was a very clear day with low RH of only 2		
24	63	29	47	0.00	0.0	0																												The AM had many very thin fibrous cirrus giving		
25	66	39	39	0.04	0.0	0																												A cloudy AM with very light rain then clearing a		
26	63	30	48	0.00	0.0	0																													A very clear AM and the PM was clear until 1500	
27	64	47	55	0.99	0.0	0																													Early AM RH was 71% before the rain with no dew.	
28	63	39	39	0.00	0.0	0																													Today's sky was variable and it was breezy with	
29	56	32	48	0.00	0.0	0																													The AM sky averaged about 80% cloudy with thin c	
30	62	39	39	0.51	0.0	0																													A rainy AM from a cold front approaching with th	
31																																				

63.3		40.0		SUM	3.47	CHECK BAR (for wire weight) NORMAL CHECK BAR		Fog	Ice pel	Glaze	Thund	Hail	Dam winds	X		
CONDITION OF RIVER AT GAGE				READING				DATE				OBSERVER				
A. Obstructed by rough ice				E. Ice gorge below gage												
B. Frozen, but open at gage				F. Shore ice												
C. Upper surface smooth ice				G. Floating ice												
D. Ice gorge above gage				H. Pool stage												
SUPERVISING OFFICE AKQ Wakefield								STATION INDEX NO. 44-7998-02								