

1		2		3		4		5		6		7		8		9		10		11		12		13		14		15		16		17		18		19	
Oct 2022	Week Day	TEMPERATURE °F				TEMPERATURE °F				SKY		PRECIPITATION			FROZ. PRECIP.		1st PERIOD																				
		MAX.	Time	MIN.	Time	RANGE	MEAN	CHANGE	SOIL	AM	PM	Liquid	1 Hr.	5 Min.	NEW	GROUND	START	END																			
Oct-01	Sat	70.9	14:17	56.4	0:01	14.5	63.7	7.2	65	2	2	0.21	0.10	0.02			0001	0155																			
Oct-02	Sun	63.5	10:34	52.5	23:59	11.0	58.0	-5.7	66	2	2	0.41	0.09	0.01			1100	2400																			
Oct-03	Mon	55.6	13:34	46.2	23:38	9.4	50.9	-7.1	65	2	2	0.16	0.05	0.01			0001	0100																			
Oct-04	Tue	57.3	12:37	46.1	0:06	11.2	51.7	0.8	64	2	2	0.01	0.01	0.01			0001	0035																			
Oct-05	Wed	66.5	15:11	51.9	3:08	14.6	59.2	7.5	63	2	2	T	T	T			0155	0255																			
Oct-06	Thu	78.4	14:23	48.3	6:56	30.1	63.4	4.2	63	0	0																										
Oct-07	Fri	80.6	15:00	49.3	7:08	31.3	65.0	1.6	64	0	0																										
Oct-08	Sat	63.9	13:34	42.5	23:51	21.4	53.2	-11.8	64	1	0																										
Oct-09	Sun	65.8	14:54	37.2	6:41	28.6	51.5	-1.7	63	0	0																										
Oct-10	Mon	70.0	14:06	41.5	3:47	28.5	55.8	4.3	62	0	0																										
Oct-11	Tue	73.8	13:54	39.5	6:56	34.3	56.7	0.9	61	0	0																										
Oct-12	Wed	73.0	14:31	47.0	7:35	26.0	60.0	3.4	61	2	2																										
Oct-13	Thu	71.6	14:55	58.2	23:59	13.4	64.9	4.9	62	2	2	0.33	0.10	0.07			0255	1050																			
Oct-14	Fri	70.5	14:13	50.0	23:54	20.5	60.3	-4.7	63	1	0	0.05	0.04	0.02			0001	0020																			
Oct-15	Sat	77.6	15:21	44.0	6:08	33.6	60.8	0.5	63	0	0																										
Oct-16	Sun	75.3	14:05	54.6	6:41	20.7	65.0	4.2	62	2	2	0.52	0.34	0.08			0528	0540																			
Oct-17	Mon	71.7	13:32	53.1	23:40	18.6	62.4	-2.6	63	2	2	0.34	0.12	0.02			0001	0420																			
Oct-18	Tue	57.6	13:21	37.2	23:56	20.4	47.4	-15.0	63	0	0																										
Oct-19	Wed	57.6	13:50	32.5	7:27	25.1	45.1	-2.4	61	0	1																										
Oct-20	Thu	62.5	14:09	32.2	7:21	30.3	47.4	2.3	59	0	0																										
Oct-21	Fri	68.0	14:07	35.7	7:11	32.3	51.9	4.5	58	0	0																										
Oct-22	Sat	72.2	14:14	38.0	7:23	34.2	55.1	3.3	58	0	0																										
Oct-23	Sun	62.5	12:19	45.2	1:30	17.3	53.9	-1.3	58	2	2	0.02	0.01	T			1435	1535																			
Oct-24	Mon	73.1	13:36	53.7	23:57	19.4	63.4	9.6	58	2	1																										
Oct-25	Tue	65.8	14:48	49.3	3:57	16.5	57.6	-5.9	59	2	2																										
Oct-26	Wed	65.8	14:54	54.1	23:58	11.7	60.0	2.4	60	2	2																										
Oct-27	Thu	65.3	14:51	46.1	8:02	19.2	55.7	-4.3	60	0	0																										
Oct-28	Fri	59.4	14:27	42.9	7:17	16.5	51.2	-4.6	59	2	2																										
Oct-29	Sat	63.8	13:47	42.8	23:57	21.0	53.3	2.2	58	0	1																										
Oct-30	Sun	65.8	13:17	36.3	7:34	29.5	51.1	-2.3	58	0	2																										
Oct-31	Mon	70.5	15:08	53.9	0:39	16.6	62.2	11.2	58	2	2	0.01	T	T			1140	1215																			
TOTAL		2095.9		1418.2		677.7	1757.1	5.8	1901	32	33	2.06	0.86	0.24	0	0	Col.26-27																				
NUMBER		31	31	31	31	31	31	31	31	31	31	10	9	8	0	0	DAILY AVE RH																				
AVERAGE		67.61	14:02	45.75	11:21	21.86	56.68		61.32	1.03	1.06	Ave. Tot.	Ave. Max	Ave. Max	Ave. Tot.	Ave. Days	76.4	Percent																			
NORMAL		71.42		50.46		20.97	60.94		65.31	1.01	1.06	4.47	0.73	0.16	0.0	0.0	75.4	Percent																			
DEPARTURES		-3.81		-4.71		0.89	-4.26		-3.99	0.02	0.01	-2.41	0.13	0.08	0.0	0.0	0.9	Percent																			
Max. Temps. >= 70°F		80.6	Ave.High Max	58.2	Ave.High Min	34.3	65.0	11.2	66.0	Whole Day		0.52	0.34	0.08	0.0	0.0	Precip	24 Hr.																			
2022	14	Oct-07	85.8	Oct-13	67.1	Oct-11	Oct-07	Oct-31	Oct-02	Ave.	1.05	Oct-16	Oct-16	Oct-16			Amount	0.82																			
Ave.	18.5		Dep.		Dep.		Oct-16			Normal	1.04						Date	Oct 16																			
Departure	-4.5		-5.2		-8.9					Depart.	0.01						Date	Oct 17																			
Min. Temps. <= 32°F		55.6	Ave.Low Max	32.2	Ave.Low Min	9.4	45.1	-15.0	58.0	SKY	AM	PM	>= 0.10	INCHES	>= 1.00	INCHES	>= 2.00	INCHES																			
2022	1	Oct-03	55.0	Oct-20	34.6	Oct-03	Oct-19	Oct-18	Oct-21	CLEAR	14	13	6	DAYS	0	DAYS	0	DAYS																			
Ave.	78.2		Dep.		Dep.				Oct-22	PT. CLO.	2	3					COOLEST	45.05																			
Departure	-77.2		0.6		-2.4				Oct-23	CLOUDY	15	15					DAY	10-19																			
Days Max. <=32°F		0		MAX.	>=90	>=85	>=80	>=75	>=70	>=65	>=60	>=55	>=50	>=45	>=40	>=35	>=32	>=30																			
Days Max. >=90°F		0		DAYS	0	0	1	4	14	21	26	31	31	31	31	31	31	31																			

20	21	22	23	24	25	26	27	28	29	30	31	32	33	34	35	36	37	38							
Oct 2022	2nd PERIOD		WIND			REL. HUMIDITY		BAROMETRIC PRESSURE				GLAZE	SLEET	SNOW	FOG	R	DEW	FROST							
	START	END	RUN	MAX.	TIME	MAX.	MIN.	MAX.	MIN.	AVE.	CHANGE														
Oct-01	0310	1200	108.7	25	0:28	98	74	29.87	29.77	29.82	-0.21						P								
Oct-02			104.6	21	13:09	98	92	30.10	29.84	29.97	0.15						2								
Oct-03	0150	0620	176.8	25	14:37	97	71	30.19	30.09	30.14	0.17						P								
Oct-04	1540	1545	118.5	20	10:08	95	71	30.15	29.96	30.06	-0.09						P								
Oct-05			67.5	18	9:44	97	73	30.04	29.92	29.98	-0.07						P								
Oct-06			16.3	12	13:41	99	41	30.07	30.00	30.04	0.05						5								
Oct-07			26.6	18	23:29	99	39	30.11	30.00	30.06	0.02						5								
Oct-08			97.3	18	9:13	92	46	30.28	30.11	30.20	0.14						N								
Oct-09			26.5	12	12:28	98	44	30.31	30.18	30.25	0.05						4	T							
Oct-10			22.4	12	10:48	97	40	30.33	30.22	30.28	0.03						4								
Oct-11			28.4	11	14:36	98	37	30.41	30.29	30.35	0.08						4								
Oct-12			60.0	15	13:51	98	58	30.31	30.03	30.17	-0.18						4								
Oct-13	1500	1545	63.1	22	23:22	98	79	30.03	29.70	29.87	-0.31						P								
Oct-14			37.0	17	0:01	98	37	30.04	29.82	29.93	0.06						P								
Oct-15			89.7	20	13:18	95	37	30.08	29.96	30.02	0.09						4								
Oct-16	0700	0720	33.1	12	20:26	97	45	30.04	29.89	29.97	-0.05						P								
Oct-17	0650	0655	57.3	15	13:34	98	65	29.92	29.61	29.77	-0.20				1		P								
Oct-18			36.2	13	14:02	91	41	29.90	29.70	29.80	0.03						3								
Oct-19			56.5	19	18:10	93	46	30.08	29.88	29.98	0.18						3	1							
Oct-20			57.7	19	14:18	97	31	30.11	29.97	30.04	0.06						4	2							
Oct-21			28.4	10	15:13	98	33	30.20	30.05	30.13	0.09						4	T							
Oct-22			23.6	9	14:29	98	36	30.28	30.18	30.23	0.11						4								
Oct-23			61.2	19	11:57	95	71	30.24	30.17	30.21	-0.03						4								
Oct-24			54.6	13	3:46	96	65	30.20	30.09	30.15	-0.06						P								
Oct-25			12.3	8	17:23	98	81	30.14	29.97	30.06	-0.09						4								
Oct-26			24.7	9	14:27	98	82	29.98	29.81	29.90	-0.16						3								
Oct-27			62.3	20	11:07	98	54	30.33	29.94	30.14	0.24						5								
Oct-28			84.2	15	9:10	88	70	30.45	30.32	30.39	0.25						2								
Oct-29			55.4	13	14:08	94	59	30.46	30.33	30.40	0.01						3								
Oct-30			15.5	8	10:30	98	57	30.33	30.12	30.23	-0.17						4	T							
Oct-31	1700	1815	49.9	12	12:42	95	70	30.13	30.00	30.07	-0.16						2								
TOTAL	Column 23		1756.3	480		2989	1745	935.11	929.92	932.52	TOTAL	0	0	0	0	1	21	2							
NUMBER	Mar. Wind Run		31	31	31	31	31	31	31	31	NORMAL	0.0	0.1	0.0	2.4	1.2	19.6	2.1							
AVERAGE	Total	1756.3	56.7	15.48	12:50	96.4	56.3	30.16	30.00	30.08	DEPART.	0.0	-0.1	0.0	-2.4	-0.2	1.4	-0.1							
NORMAL Departures	Miles	1596.2	57.2	16.7	Directions	95.8	54.9	29.93	29.80	30.05	Rating ▶	0	0	0	0	1	77	3							
	Miles	160.1	-0.5	-1.2	Date Order	0.6	-1.4	0.23	0.20	0.03	Intensity	GLAZE	SLEET	SNOW	FOG	R	Dew	Frost							
MAXIMUM DATES		Dates	176.8	25	N, NNE	99	92	30.46	30.33	30.40	0.25	GLAZE	SLEET	SNOW	FOG	R	Dew	Frost							
		1	Oct-01	Oct-01	0:28	Oct-06	Oct-02	Oct-29	Oct-29	Oct-29	Oct-28								5. Very Heavy					N- None No Dew Obs.	
		2	Oct-03	Oct-03	14:37	Oct-07													4. Heavy-Unusual					P- Precip. prevent obs.	
		3																	3. Moderate - Ave.						
		4			Ave. Max.														2. Light - >= Ave.						
Min. Temps. >= 70°F		Dates	12.3	8	32.4	88	31	29.87	29.61	29.77	-0.31	1. Very Light - Slight - Trace													
2022		0										M - Event with intensity missing													
Ave.		0.4			Dep.	Oct-28	Oct-20	Oct-01	Oct-17	Oct-17	Oct-13														
Departure		-0.4			-7.4																				
Days Min. <=32 °F		1	MIN.	<=75	<=70	<=65	<=60	<=55	<=50	<=45	<=40	<=35	<=32	<=30	<=25										
Days Min >=70°F		0	DAYS	31	31	31	31	29	22	14	8	2	1	0	0										

39

40

## REMARKS FOR THE MONTH

October - 2022

<b>Oct-01</b>	AM HAD OCCASIONAL SHOWERS TO NOON AND PM WAS CLOUDY EXCEPT FOR PERIOD 1340-1445
<b>Oct-02</b>	AM WAS CLOUDY WITH RAIN STARTING AT 1100 & WAS LIGHT BUT CONTINUOUS
<b>Oct-03</b>	3RD PD. OF PRECIP. 2010-2155, 4TH PD. 2245-2400-TODAY WAS A WINDY CHILLY AND GLOOMY DAY WITH LITTLE PRECIP.
<b>Oct-04</b>	ANOTHER CLOUDY BREEZY AND CHILLY DAY FOR FIRST OF OCT.
<b>Oct-05</b>	TODAY WAS MAINLY CLOUDY WITH A CLEARING SKY AFTER 1650-MAX. WIND 18 MPH AT 0944-LOW PRESSURE HEADED SE OFF COAST FINALLY
<b>Oct-06</b>	AM HAD A FEW VERY THIN CIRRUS CLOUDS THAT WERE WIDELY SCATTERED- PM WAS VERY CLEAR TO 1500 THEN CIRRUS & CIRROSTRATUS CAME BACK BUT NOT ENOUGH
<b>Oct-07</b>	VERY CLEAR AM WITH NO CLOUDS-PM HAD A FEW SMALL CUMULUS STARTING AT 1545 AND INCREASED TO SUNSET & A COLD FRONT PASSED AROUND 2300
<b>Oct-08</b>	CLOUDS BETWEEN 1030-NOON MADE FOR A PC AM-PM WAS CLEAR MAX. WIND 18 MPH AT 0913
<b>Oct-09</b>	LOWEST MIN. TEMP. SINCE APR. 29, 2022 WHEN IT WAS 36.6 degrees F -TRACE OF FROST ON ROOFS CLEAR SKIES 0820-1215 THEN SCATTERED CUMULUS TO 1340 FOLLOWED BY CLEAR
<b>Oct-10</b>	AM CLOUDS CLEARED BY 0835 & IT WAS TOTALLY CLEAR FOR THE REST OF THE DAY
<b>Oct-11</b>	AM SKY WAS CLEAR AND PM SKY WAS CLEAR TO 1500 WHEN CIRRUS CAME IN FROM SOUTH
<b>Oct-12</b>	AM CIRRUS CLOUD COVER WAS NEAR TOTAL BUT THIN ENOUGH TO SEE SHADOWS ALL MORNING-PM CLOUDS THICKENED ENOUGH THAT NO SHADOWS WERE SEEN AFTER 1530
<b>Oct-13</b>	3RD PD. OF PRECIP. 2335-2400-A COLD FRONT PASSED AT 2310 WITH A MAX. WIND GUST OF 22 MPH AT 1322
<b>Oct-14</b>	AM CLOUDS STARTED TO CLEAR AT 0830 & WAS PC BY 1000 & VERY CLEAR AFTER 1130 & FOR REST OF DAY
<b>Oct-15</b>	A VERY CLEAR AND COMFORTABLE FALL DAY BUT BREEZY - MAX. WIND 20 MPH AT 1318
<b>Oct-16</b>	AFTER AM SPRINKLES CLOUDS CLEARED TO CIRRUS AT 0845 & ALTOCUMULUS AT 0945 BECOMING PC BY 1115 & MOSTLY CLEAR TO NOON-PM BECAME CLOUDY AT 1440 & WAS
<b>Oct-17</b>	<b>TS RATED 1-2-2</b> THE TS GAVE 0.22 INCHES RAIN BY 0700 & ADDITIONAL 0.12 INCHES OCCURRED FROM 1625-1730. CLOUDY MOST OF DAY
<b>Oct-18</b>	AM CLOUDS TO 0800 THEN VERY CLEAR TO 1150-PM HAD SCATTERED FAIR WEATHER CUMULUS TO1530 THEN SCATTERED STRATOCUMULUS 1615-1700
<b>Oct-19</b>	COLDEST SINCE APR. 20, 2022 WHEN IT WAS 30.7 degrees F -ROOFS WERE WHITE WITH FROST BUT NO FROST SEEN ON GRASS AND NO PLANTS KILLED. A VERY CLEAR AM UNTIL 1130
<b>Oct-20</b>	COLDEST SINCE APR. 20, 2022 WHEN IT WAS 30.7 degrees F -ROOFS WERE WHITE WITH FROST AND PLANTS SHOWED SOME DAMAGE BUT NOT KILLED FOLLOWED BY VERY CLEAR DAY
<b>Oct-21</b>	NOT ONE CLOUD SEEN TODAY-LARGE TEMP. RANGE OF 32.3 degrees F
<b>Oct-22</b>	FIRST CIRRUS CAME IN AT 1600 FROM EAST THAT BECAME THICKER AND COVERED SKY BY SUNSET
<b>Oct-23</b>	BROKEN CLOUDS UNTIL 0940 THEN A SOLID OVERCAST OF ALTOSTRATUS FOLLOWED BY DRIZZLE AT 1435
<b>Oct-24</b>	CLOUDS STARTED TO CLEAR AROUND 1000 & WAS PC TO 1100-PM AVERAGED PC & WAS CLEAR AFTER 1515
<b>Oct-25</b>	TODAY WAS A CLOUDY DAMP DAY WITH ONLY A COUPLE PERIODS OF SUN
<b>Oct-26</b>	CLOUDY ALL DAY UNTIL 1730 WITH CLEARING TO WEST ABOUT SUNSET
<b>Oct-27</b>	TODAY WAS CLEAR AND BREEZY AFTER A COLD FRONT PASSED AROUND 0900
<b>Oct-28</b>	AM STARTED OUT CLEAR BUT WAS CLOUDY AFTER 0855 & REMAINED CLOUDY FOR THE REST OF DAY. MAX. WIND WAS 15 MPH AT 0910
<b>Oct-29</b>	CUMULUS CAME IN AT 1120 & BECAME MOSTLY CLOUDY TO 1300 BUT THEN A CLEAR SKY AT 1500 FOR REST OF DAY
<b>Oct-30</b>	AM HAD A TRACE OF FROST ON ROOFS AND THE AM SKY WAS MOSTLY CLEAR UNTIL 1100 WHEN CIRRUS CAME IN. THE PM WAS PARTLY CLOUDY WITH CIRRUS FROM 1330 TO 1510 AND
<b>Oct-31</b>	TODAY WAS CLOUDY MOST OF THE DAY WITH A FEW AM BREAKS IN THE CLOUDS AND THE CLOUDS WERE THIN ENOUGH TO LET ENOUGH ENERGY THROUGH TO MAKE WEAK SHADOWS

## DATE EXTENSION OF LENGTHY DAILY REMARKS

<b>Oct-06</b>	CLOUDS TO CALL THE PM PARTLY CLOUDY
<b>Oct-09</b>	INTO THE NIGHT
<b>Oct-16</b>	CLOUDY FOR REST OF DAY-3RD PD. OF PRECIP. 1520-1645, 4TH PD. 1835-2400
<b>Oct-19</b>	THEN SCATTERED CUMULUS TO 1300 THAT THICKENED AND SOME BECAME STRATOCUMULUS FOLLOWED BY CLEARING AGAIN
<b>Oct-30</b>	CLOUDY AFTER 1515 FOR THE REST OF THE DAY.
<b>Oct-31</b>	EVEN IN THE PM TO 1500. The TWO SPRINKLES WERE VERY LIGHT.

The daily records for the month are listed on page # 4 and not found in the remarks.

The link below explains how observations are taken at the Glen Allen Weather Station - Note the Numbers match the column numbers on the Observation Sheet

[Rules for making Observations in 2022](#)

41

## DAILY RECORDS FOR THE MONTH

Oct

2022

## The Glen Allen Station had 17 Records or Record Ties for October 2021

1	
2	
3	The maximum temperature on the 3rd was 55.6&deg;F, a new 14-year cold daily maximum temperature record for the date - the old record was 60&deg;F in 2011. The daily temperature range on the 3rd was 9.4&deg;F, a new 14-year LOW daily temperature range record for the date - the old record was 11.4&deg;F in 2015.
4	The maximum temperature on the 4th was 57.3&deg;F, a new 14-year cold daily maximum temperature record for the date - the old record was 59&deg;F in 2010.
5	The daily precipitation on the 5th was T inches, and EQUALED the, 14-year HIGH daily precipitation record for the date - the old record was set in 2021.
6	The daily temperature range on the 6th was 30.1&deg;F, a new 14-year HIGH daily temperature range record for the date - the old record was 30&deg;F in 2020 and 2014.
7	The daily temperature range on the 7th was 31.3&deg;F, a new 14-year HIGH daily temperature range record for the date - the old record was 31&deg;F in 2010.
8	
9	The minimum temperature on the 9th was 37.2&deg;F, a new 14-year LOW daily minimum temperature record for the date - the old record was 46&deg;F in 2012 and 2011.
10	The minimum temperature on the 10th was 41.5&deg;F, a new 14-year LOW daily minimum temperature record for the date - the old record was 45.2&deg;F in 2016.
11	The minimum temperature on the 11th was 39.5&deg;F, a new 14-year LOW daily minimum temperature record for the date - the old record was 40.1&deg;F in 2016. The daily temperature range on the 11th was 34.3&deg;F, a new 14-year HIGH daily temperature range record for the date - the old record was 33&deg;F in 2010.
12	
13	
14	
15	The daily temperature range on the 15th was 33.6&deg;F, a new 14-year HIGH daily temperature range record for the date - the old record was 31&deg;F in 2019. The minimum temperature on the 15th was 44&deg;F, and EQUALED the, 14-year HIGH daily minimum temperature record for the date - the old record was set in 2009.
16	
17	
18	
19	The minimum temperature on the 19th was 32.5&deg;F, a new 14-year LOW daily minimum temperature record for the date - the old record was 33.2&deg;F in 2015. The maximum temperature on the 19th was 57.6&deg;F, a new 14-year cold daily maximum temperature record for the date - the old record was 58&deg;F in 2008.
20	
21	The minimum temperature on the 21st was 35.7&deg;F, a new 14-year LOW daily minimum temperature record for the date - the old record was 36.6&deg;F in 2018.
22	
23	The daily temperature range on the 23rd was 17.3&deg;F, a new 14-year LOW daily temperature range record for the date - the old record was 19&deg;F in 2013.
24	
25	
26	
27	
28	
29	The daily temperature range on the 30th was 29.1&deg;F, a new 14-year HIGH daily temperature range record for the date - the old record was 28.4&deg;F in 2016.
30	
31	

# October 2022

## Springfield Park, Glen Allen, VA

**October was very cool and dry.** The average maximum 67.6 F (departure -3.8), average minimum 45.8 F (departure -4.7) and average mean temp. 56.7 F (departure -4.3) were all new records lows for Springfield Park. The graph also shows almost all of the month was below average in temp. for both the max. and min. temperatures; it was the chilliest October on record. The highest maximum temperature for Oct. was only 80.6 F on October the 7<sup>th</sup> a -5.2 deg. F departure. In October 2, 2019, both the Airport and Springfield, had a 98 F for the maximum an interesting comparison. October had only one 80-degree day which tied with 2015 for the least 80 F days in October. The average ground temp. at one foot was 61.3 F which was a 14-year record low average. The highest daily mean temperature (the warmest day) was 65.0 F on the 7<sup>th</sup> and 16<sup>th</sup> setting a new 14-year record low which was 5.8 F lower than the previous record. The highest min. temperature for Oct. was 58.2 F on Oct. 13<sup>th</sup>; the previous record was 60 F in 2009.

Oct. had 10 days with measurable precip. which is near average but it was the 2<sup>nd</sup> driest on record in the past 14 years with only 2.06 inches and a negative 2.41-inch departure. The driest was 2008 with only 1.13 inches and the 0.52 inches in a calendar day was a new low record.

October was near average in cloudiness even though the first 5 days were cloudy and very chilly for October.

Springfield Park set 17 fourteen-year daily records for the month, 9 of which were for record low max. and min. temperatures.

The maximum wind gust for October was only 25 mph on the 1<sup>st</sup> and 3<sup>rd</sup>.

## Richmond International Airport

The Richmond International Airport's average mean temperature was 57.7 F, a departure of -2.3 degrees, the coolest October since 2015 and the 33<sup>rd</sup> coolest October since 1897. This was the coolest October at the Airport since 2015 which had a mean temp. of 57.6 F and the next coolest was 1999 with 57.2 F. The average maximum was 68.6 degrees, a -2.3 F departure, and the average minimum was 46.8 degrees which was a -2.2 F departure. October's highest maximum temperature was 82 F on the 7<sup>th</sup> and only 17 Octobers have been lower since 1897. October's highest minimum temperature was 59 F on the 1<sup>st</sup> and 13<sup>th</sup> and only 11 Octobers have been lower since 1897. The lowest maximum temperature for October was 55 degrees on the 3<sup>rd</sup>. The highest daily mean minimum temp. for October was 67 F on the 7<sup>th</sup> and only 5 Octobers since 1897 have had a lower reading. The record is only 64 F in 1987.

The Richmond International Airport had 1 daily record tied for the month. On the 4<sup>th</sup> the 57 F maximum tied the record set 1996 for the lowest max. temp. for the date in October. (Records since 1897).

The Airport had only 1.91 inches of precipitation, a departure of -1.48 inches, with 9 days of measurable precipitation. This October tied for the 42<sup>nd</sup> driest on record at the Airport since 1887. It was also the driest October at the Airport since 2008 when 1.32 inches was recorded.

# ACON - VA/NC/SC

The Atlantic Coast Observer Network: Virginia, North Carolina, South Carolina

## October 2022

### Station summary of Climatological Data

Observer: Lowell L. Koontz West Henrico - Glen Allen, VA

Observation Times: Temps Recorded 2400 Precipitation Recorded 2400

#### TEMPERATURE °F

A	MEAN MAXIMUM	67.61
B	MEAN MINIMUM	45.75
C	MEAN MONTHLY	56.68
C1	MEAN TEMP DEP.	-4.26
D	MAXIMUM	80.6
E	DATE(s) OF MAX.	Oct-07
F	MINIMUM	32.2
G	DATE(s) OF MIN.	Oct-20
H	# DAYS MAX. > = 90°	0
I	# MAX. < = 32°	0
J	MIN. < = 32°	1
K	MIN. < = 0°	0
K1	AVE RELATIVE HUMIDITY	76.4

#### WIND MPH

L	MAX. GUST	25
M	DIRECT. OF GUST	N, NNE
N	DATE	Oct 1 <sup>st</sup> & Oct 3 <sup>rd</sup>
	TIME	0020, 1437

#### NUMBER DAYS WITH -

O	THUNDER	1
P	HAIL	0
Q	GLAZE	0
R	ICE PELLETS (SLEET)	0
R1	DENSE FOG < = 1/4 MILE	0

#### PRECIPITATION INCHES

T	MONTH TOTAL	2.06
U	CALENDAR DAY MAX.	0.52
U1	DATE OF MAX.	Oct-16
V	24-HR. PERIOD MAX.	0.82
V1	DATE(s) OF MAX. PD.	16 <sup>TH</sup> -17 <sup>TH</sup>
W	# DAYS > = 0.01"	10
X	# DAYS > = 1.00"	0
Y	YR. TO DATE TOT.	35.63
	MAX. 1 HR. PRECIP.	0.34
	MAX. 5 MIN PRECIP.	0.08

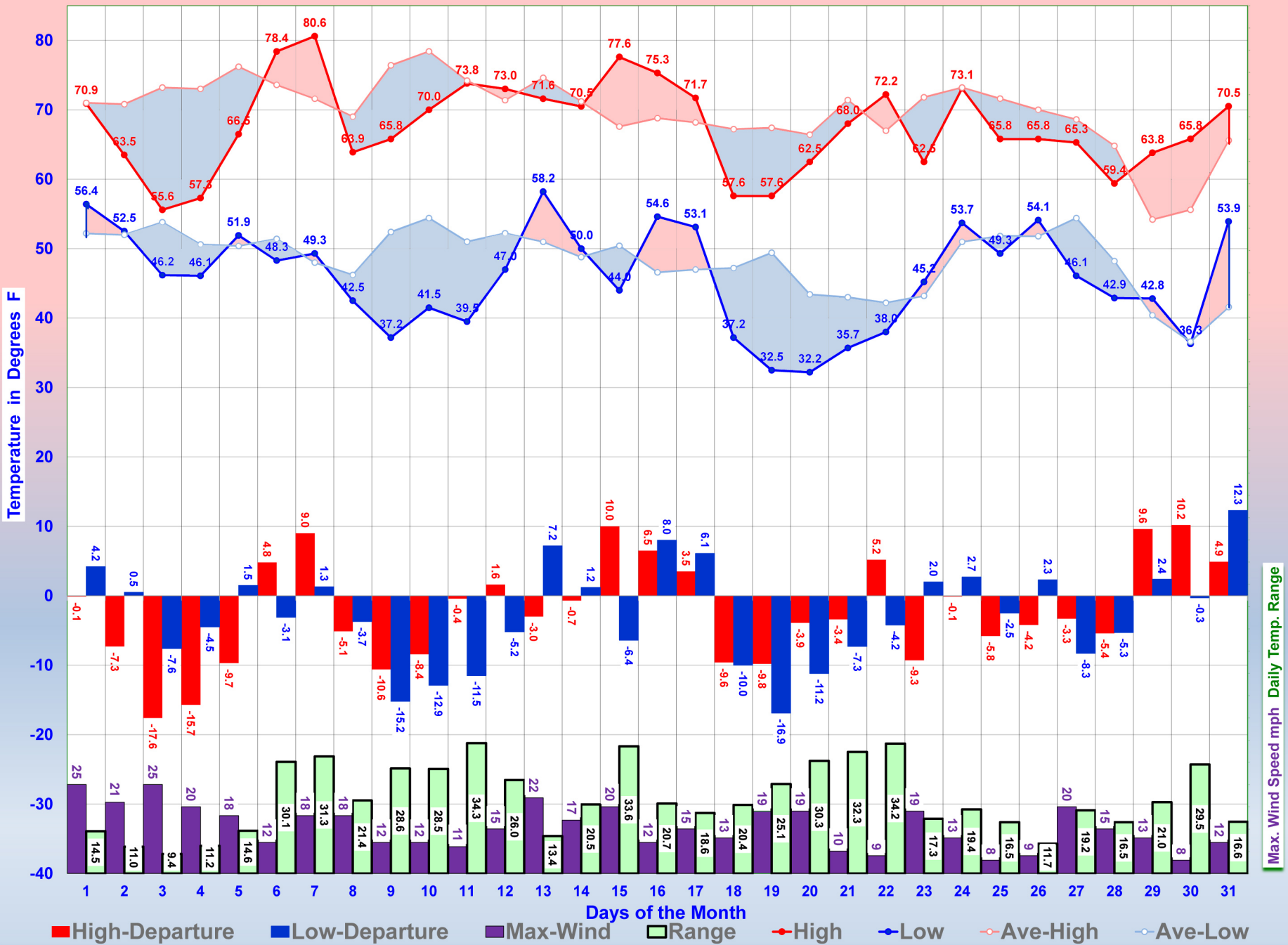
#### SNOWFALL INCHES

Z	DAILY MAXIMUM	0.0
1	DATE OF MAX.	
2	DAYS= > TRACE	0
3	DAYS > = 1.0"	0
4	MONTHLY TOTAL	0.0
5	2021 - 2022 SEASON'S TOT.	0.0

#### BAROMETER

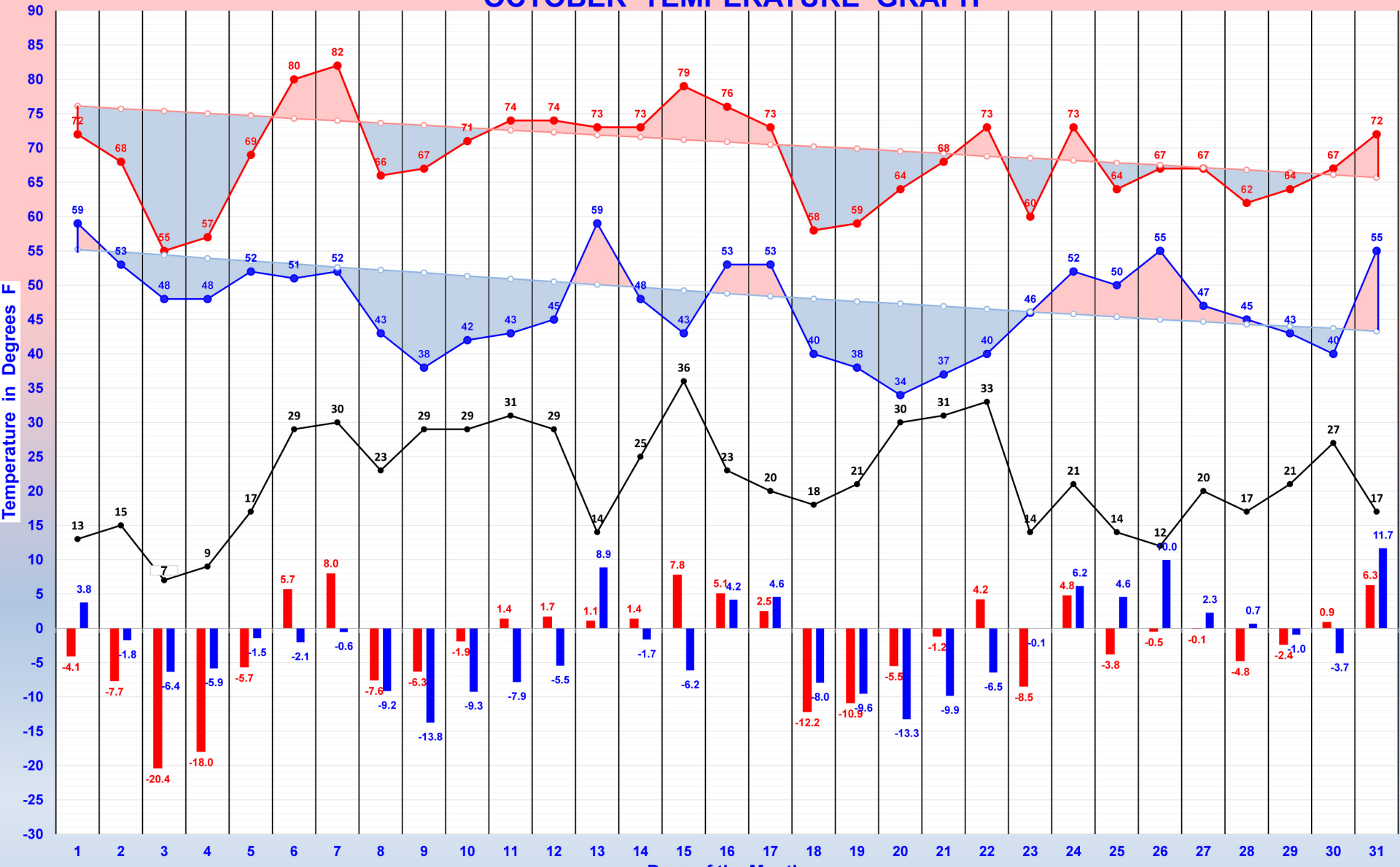
6	MAXIMUM	30.46
6A	DATE	Oct-29
7	MINIMUM	29.61
7A	DATE	Jan-29
8	AVE. MONTHLY PRESSURE	30.08
CWA	NWS COUNTY WARNING AREA	Henrico

# SPRINGFIELD PARK'S OCTOBER TEMPERATURE & WIND GRAPH





# The Richmond International Airport OCTOBER TEMPERATURE GRAPH



■ High-Departure    
 ■ Low-Departure    
 ● High     ● Low    
 ○ Ave-High     ○ Ave-Low    
 ● Range



STATION (Climatological) Springfield Park		(River Station, if different)		MONTH	Oct	2022
STATE VA		COUNTY Henrico		RIVER		
TIME (local) OF OBSERVATION RIVER		TEMPERATURE MID	PRECIPITATION MID	STANDARD TIME IN USE		
TYPE OF RIVER GAGE		ELEVATION OF RIVER GAGE ZERO	FLOOD STAGE	NORMAL POOL STAGE		

WS FORM B-91 (03-09)	U.S. DEPARTMENT OF COMMERCE NATIONAL OCEANIC AND ATMOSPHERIC ADMINISTRATION NATIONAL WEATHER SERVICE
-------------------------	--

## RECORD OF RIVER AND CLIMATOLOGICAL OBSERVATIONS

DATE	TEMPERATURE			PRECIPITATION														WEATHER (Observation Day)						RIVER STAGE			REMARKS <i>(SPECIAL OBSERVATIONS, ETC.)</i>																							
	24 HRS ENDING AT OBSERVATION		AT OBSN	24 HR AMOUNTS		AT OB		Draw a straight line (-----) through hours precipitation was observed, and a wavy line (~~~~~) through hours precipitation probably occurred unobserved														Mark 'X' for all types occurring each day						Condition	Gage reading at ___ AM	Tendency																				
	MAX	MIN		Rain, melted snow, etc. <i>(in and hundredths)</i>	Snow, ice pellets, hail <i>(in and hundredths)</i>	A.M.	NOON	P.M.	Fog	Ice pellets	Glaze	Thunder	Hail	Damaging winds	Time of occurrence if different from above																																			
	1	2	3	4	5	6	7	8	9	10	11	1	2	3		4	5	6	7	8	9	10	11																											
1	71	56	59	0.21	0.0	0	---	---	---	---	---	---	---	---	---	---	---	---	---	---	---																The AM had occasional showers to noon and the PM													
2	64	53	53	0.41	0.0	0	---	---	---	---	---	---	---	---	---	---	---	---	---	---	---	---														The AM had stratus clouds with rain starting at														
3	56	46	46	0.16	0.0	0	---	---	---	---	---	---	---	---	---	---	---	---	---	---	---	---														Today was windy, chilly and gloomy with a max. w														
4	57	46	53	0.01	0.0	0	---	---	---	---	---	---	---	---	---	---	---	---	---	---	---	---														Another cloudy damp very chilly day for early Oc														
5	67	52	55	T	0.0	0	---	---	---	---	---	---	---	---	---	---	---	---	---	---	---	---														Today was cloudy with clearing started after 161														
6	78	48	56	0.00	0.0	0	---	---	---	---	---	---	---	---	---	---	---	---	---	---	---	---														Both AM & PM averaged clear. The AM had only a f														
7	81	49	63	0.00	0.0	0	---	---	---	---	---	---	---	---	---	---	---	---	---	---	---	---														The AM had no clouds. The PM was clear until 154														
8	64	43	43	0.00	0.0	0	---	---	---	---	---	---	---	---	---	---	---	---	---	---	---	---														Clouds between 1030 and noon made for a partly c														
9	66	37	43	0.00	0.0	0	---	---	---	---	---	---	---	---	---	---	---	---	---	---	---	---														The minimum temperature was 37.2 the lowest sinc														
10	70	42	45	0.00	0.0	0	---	---	---	---	---	---	---	---	---	---	---	---	---	---	---	---														AM clouds cleared by 0835 and it was totally cle														
11	74	40	55	0.00	0.0	0	---	---	---	---	---	---	---	---	---	---	---	---	---	---	---	---														The AM sky was clear. The PM sky was clear to														
12	73	47	65	0.00	0.0	0	---	---	---	---	---	---	---	---	---	---	---	---	---	---	---	---														AM thin cirrus overcast greater than 90% but su														
13	72	58	58	0.33	0.0	0	---	---	---	---	---	---	---	---	---	---	---	---	---	---	---	---														Today was cloudy with a cold front passing at 23														
14	71	50	50	0.05	0.0	0	---	---	---	---	---	---	---	---	---	---	---	---	---	---	---	---														The cloudy AM started to clear at 0830 and was p														
15	78	44	63	0.00	0.0	0	---	---	---	---	---	---	---	---	---	---	---	---	---	---	---	---														A very clear breezy but comfortable fall day wit														
16	75	55	58	0.52	0.0	0	---	---	---	---	---	---	---	---	---	---	---	---	---	---	---	---														After some AM sprinkles of 0.01 inches from 0528														
17	72	53	53	0.34	0.0	0	---	---	---	---	---	---	---	---	---	---	---	---	---	---	---	---														0.22 inches precipitation by 0700 and an additio														
18	58	37	37	0.00	0.0	0	---	---	---	---	---	---	---	---	---	---	---	---	---	---	---	---														AM clouds to 0800 then very clear to 1150. The P														
19	58	33	37	0.00	0.0	0	---	---	---	---	---	---	---	---	---	---	---	---	---	---	---	---														The minimum temperature today was 32.5 degrees F														
20	63	32	45	0.00	0.0	0	---	---	---	---	---	---	---	---	---	---	---	---	---	---	---	---														The minimum temperature today was 32.2 degrees F														
21	68	36	50	0.00	0.0	0	---	---	---	---	---	---	---	---	---	---	---	---	---	---	---	---														A deep blue sky and not one cloud seen all day w														
22	72	38	48	0.00	0.0	0	---	---	---	---	---	---	---	---	---	---	---	---	---	---	---	---														Clear all day to 1600 when high thin cirrus came														
23	63	45	58	0.02	0.0	0	---	---	---	---	---	---	---	---	---	---	---	---	---	---	---	---														Broken AM clouds until 0940 then a solid overcas														
24	73	54	54	0.00	0.0	0	---	---	---	---	---	---	---	---	---	---	---	---	---	---	---	---														AM clouds started to clear at 1000 and as partly														
25	66	49	60	0.00	0.0	0	---	---	---	---	---	---	---	---	---	---	---	---	---	---	---	---														Springfield Park had some very light morning fo														
26	66	54	54	0.00	0.0	0	---	---	---	---	---	---	---	---	---	---	---	---	---	---	---	---														Today was cloudy all day until 1730 with clearin														
27	65	46	48	0.00	0.0	0	---	---	---	---	---	---	---	---	---	---	---	---	---	---	---	---														A cold front passed at 0900 making for a clear a														
28	60	43	53	0.00	0.0	0	---	---	---	---	---	---	---	---	---	---	---	---	---	---	---	---														The AM started clear but it was cloudy by 0855 a														
29	64	43	43	0.00	0.0	0	---	---	---	---	---	---	---	---	---	---	---	---	---	---	---	---														Cumulus came in at 1120 and it became mostly clo														
30	66	36	56	0.00	0.0	0	---	---	---	---	---	---	---	---	---	---	---	---	---	---	---	---														The AM was mostly clear to 1100 when cirrus clou														
31	71	54	62	0.01	0.0	0	---	---	---	---	---	---	---	---	---	---	---	---	---	---	---	---														Today had a near total overcast most of the time														
	67.8	45.8	SUM	2.06			CHECK BAR (for wire weight) NORMAL CHECK BAR																																											
CONDITION OF RIVER AT GAGE			READING			DATE			Fog	Ice pel	Glaze	Thund	Hail	Dam winds	OBSERVER		SUPERVISING OFFICE			STATION INDEX NO.																														
A. Obstructed by rough ice			E. Ice gorge below gage											AKQ Wakefield		44-7998-02																																		
B. Frozen, but open at gage			F. Shore ice																																															
C. Upper surface smooth ice			G. Floating ice																																															
D. Ice gorge above gage			H. Pool stage																																															